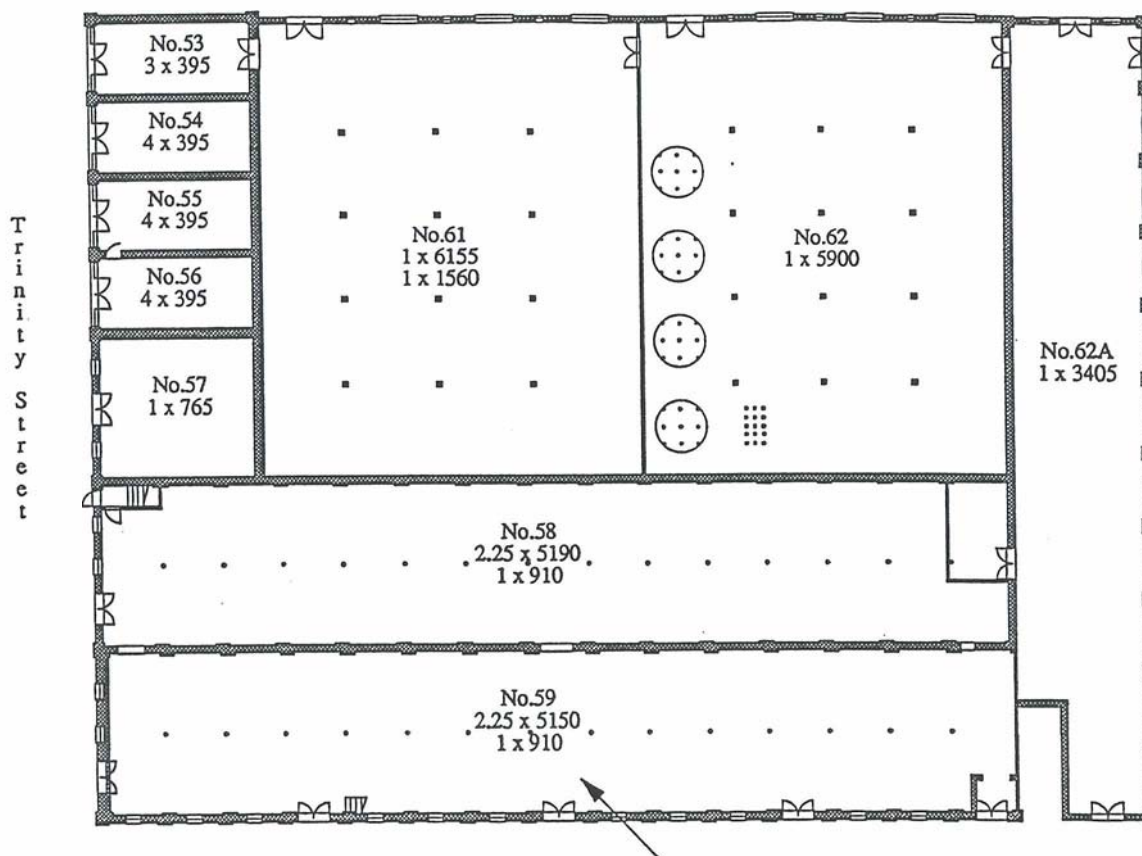


## GROUP C: Pure Spirits Complex Floor Plan



### EQUIPMENT SUMMARY

#### BUILDING #53

Floor 1  
No Equipment Observed

Floor 2  
No Equipment Observed

Floor 3  
No Equipment Observed

Floor 4  
53-4-1 Water Distillation Unit  
53-4-2 Water Distillation Unit

#### BUILDING #54

Floor 1  
54-1-1 Floor Scale

Floor 2  
No Equipment Observed

Floor 3  
No Equipment Observed

Floor 4  
No Equipment Observed

#### BUILDING #55

Floor 1  
No Equipment Observed

Floor 2  
55-2-1 Scales and Scale Tanks  
55-2-2 Scales and Scale Tanks

Floor 3  
No Equipment Observed

Floor 4  
No Equipment Observed

#### BUILDING #56

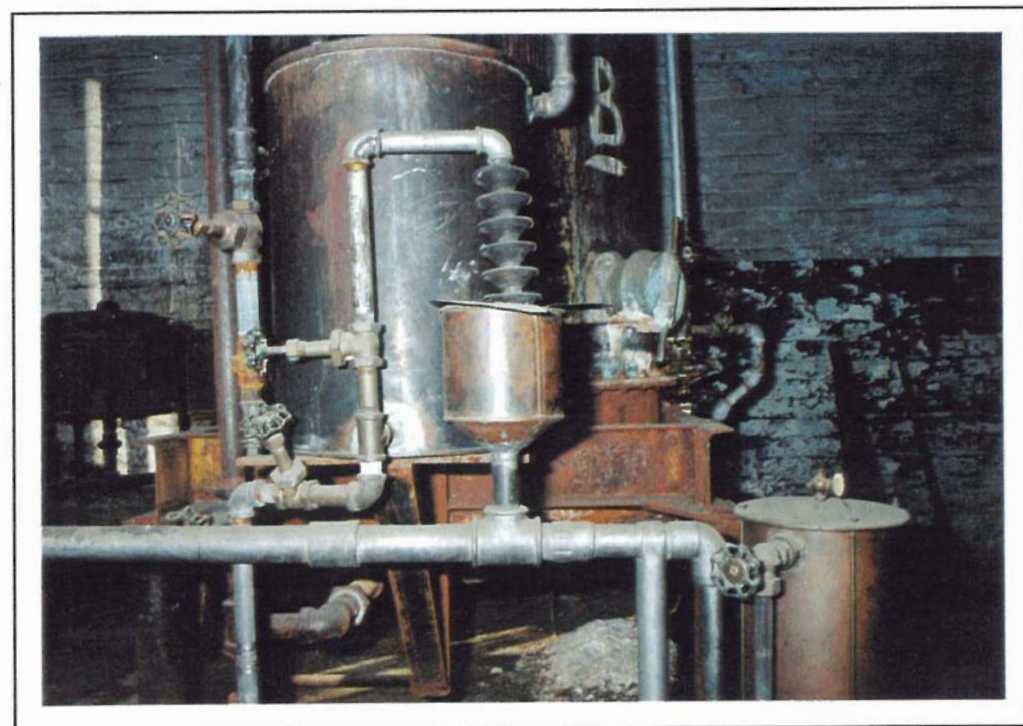
Floor 1  
56-1-1 Wine Still  
56-1-2 Rectifying Still  
56-1-3 Duplex Pump  
56-2-4 Yeast Tub  
56-2-5 Tail Box (Rectifying)  
56-2-6 Tail Box (Wine Still)  
56-3-7 Condenser (Rectifying)  
56-3-8 Condenser (Rye Still)  
56-4-9 Dephlegmator (Rectifying)  
56-4-10 Doubler Rye Still

#### BUILDING #57

No Equipment Observed



53-4-1/2 Water Still



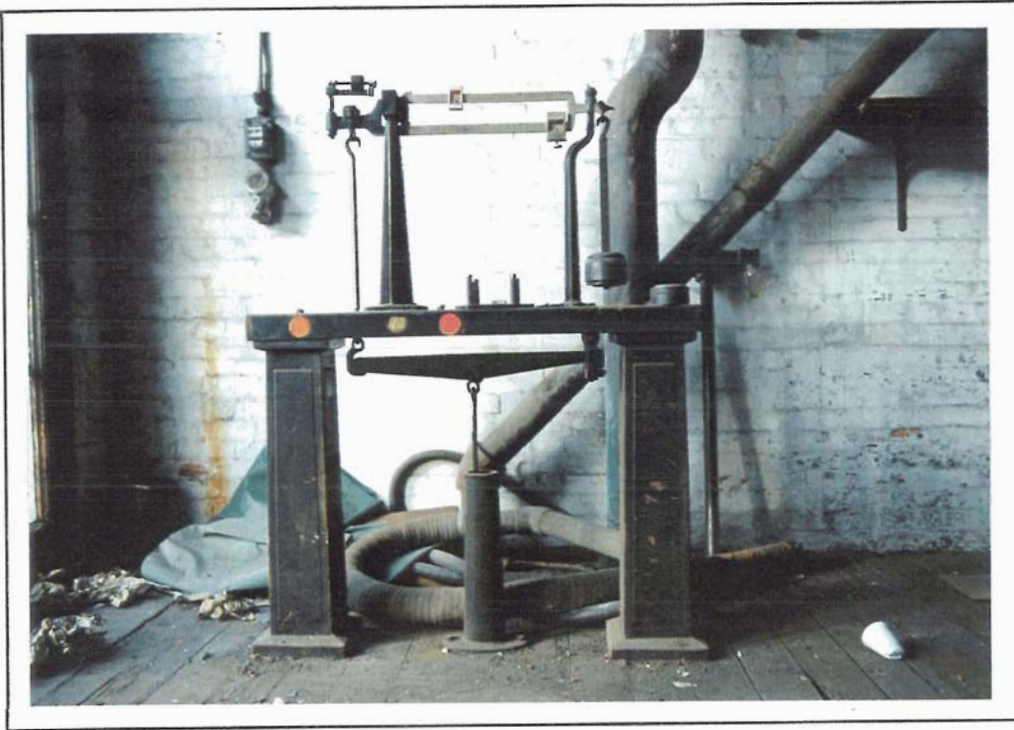
53-4-1/2 Water Still (Detail)

## ITEM NO.

53-4-1

53-4-2

LOCATION	Building #53 Pure Spirits	<b>Floor:</b> 4	<b>Compass:</b> N
ITEM NAME	Water Still C1900	<b>Quantity:</b> 2	
MARKINGS	(On tank plate) "POLAR WATER STILL" "MANUFACTURING" Paint "A", "B" Stencilled "280 GALS"		
MATERIALS	<b>Primary:</b> Formed and welded copper <b>Secondary:</b> Iron piping Angle iron frame Brass valves		
DIMENSIONS	<b>Height:</b> 8'	<b>Width:</b> 3'D	<b>Depth:</b>
CONDITION	Poor		
USAGE	A. <b>Distillery:</b> To provide distilled water to reduce alcohol to bottling strength. B. <b>General:</b>		
SIGNIFICANCE	Significant equipment central to bottling operations.		



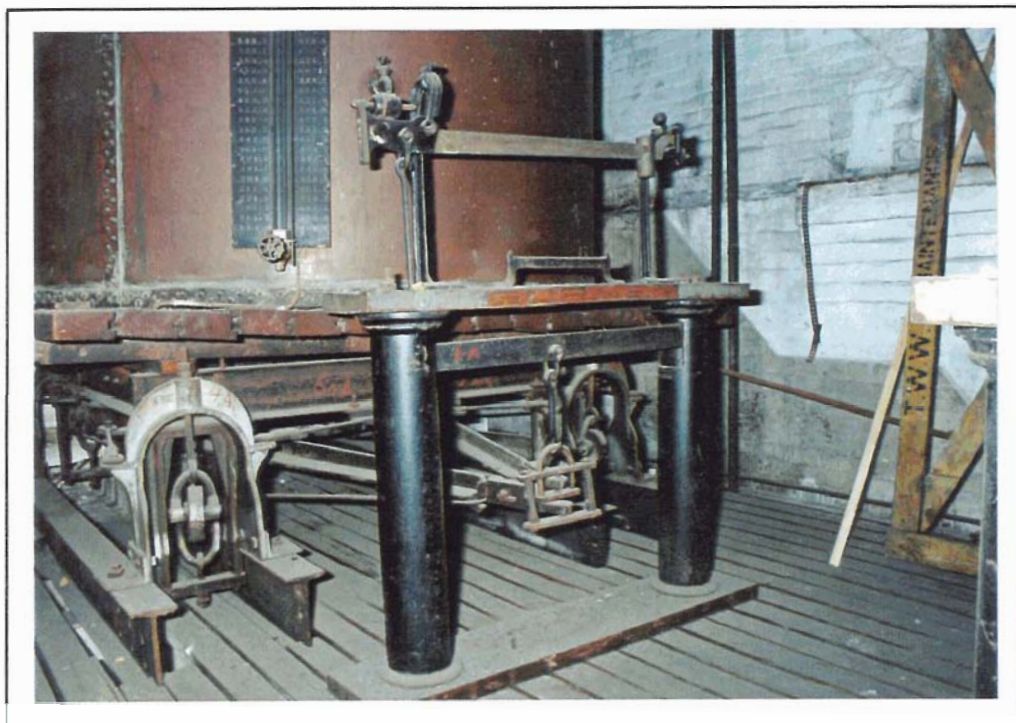
54-1-1 Floor Scale

ITEM NO.  
54-1-1

LOCATION	Building #54 Pure Spirits	<b>Floor:</b> 1	<b>Compass:</b> N
ITEM NAME	Floor Scale C1920	<b>Quantity:</b> 1	
MARKINGS	(On balance beam) "FAIRBANKS MADE IN CANADA"		
MATERIALS	<b>Primary:</b> Wood posts and table Wood floor platen  <b>Secondary:</b> Steel linkages and pivot towers Brass balance beam Cast steel weights		
DIMENSIONS	<b>Height:</b> 5'	<b>Width:</b> 4'	<b>Depth:</b> 18"
CONDITION	Serviceable		
USAGE	A. <b>Distillery:</b> To weigh barrels for excise purposes. B. <b>General:</b>		
SIGNIFICANCE	Indicative of role of excise control.		



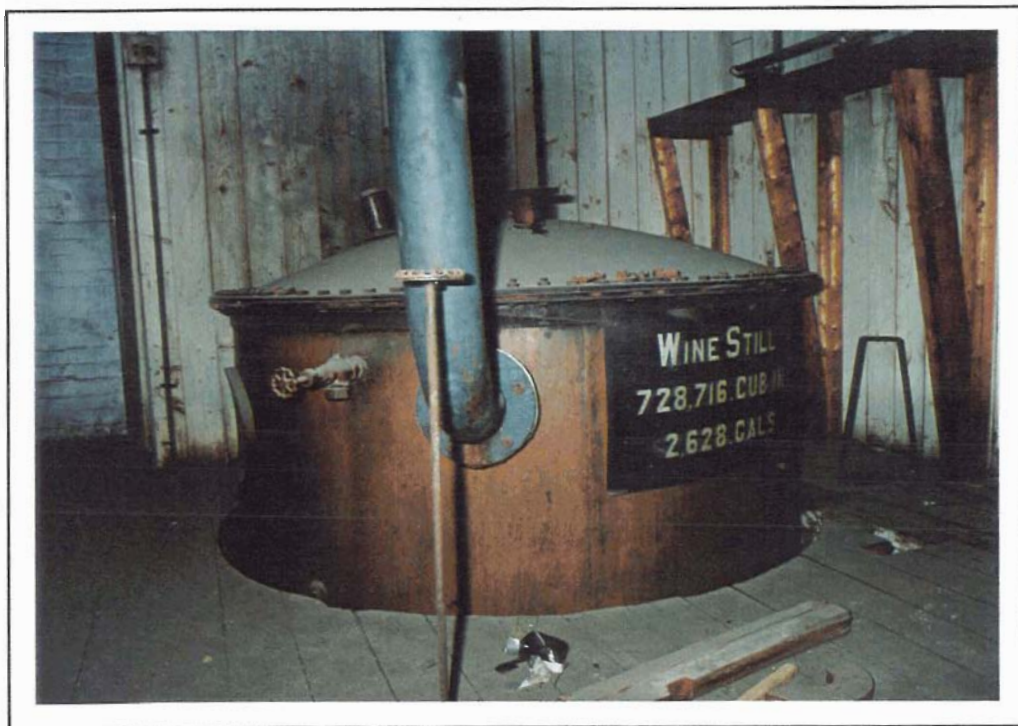
55-2-1/2 Scales and Scale Tanks



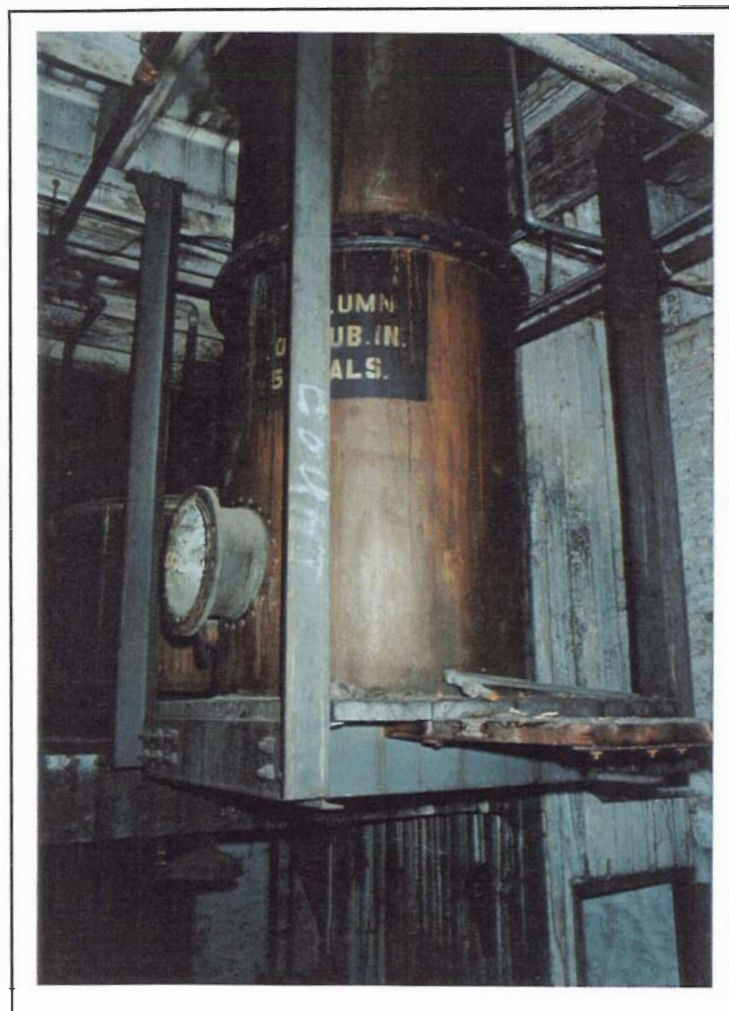
55-2-1/2 Scales and Scale Tanks (Detail)

ITEM NO.  
55-2-1/2

LOCATION	Building #55 Pure Spirits	<b>Floor:</b> 2	<b>Compass:</b> E/W
ITEM NAME	Scales and Scale Tanks C1900	<b>Quantity:</b> 2	
MARKINGS	Tank Stencilled	"348,529 CUB. IN."	"1,257 GALS"
		"NO. 1"	"NO. 2"
	Scale Stencilled	"GURNEY"	
MATERIALS	<b>Primary:</b> Tanks are formed and rivetted copper. Scales, cast iron columns, pivot towers and linkages.		
	<b>Secondary:</b> Brass balance beams Cast iron weights		
DIMENSIONS	<b>Height:</b> 8'	<b>Width:</b> 6'D	<b>Depth:</b>
CONDITION	Serviceable		
USAGE	A. <b>Distillery:</b> Functioned as closed receivers to contain and weigh exciseable spirits.  B. <b>General:</b>		
SIGNIFICANCE	Central to operation of distillery.		



56-1-1 Wine Still



56-1-2 Rectifying Column Still

ITEM NO.  
56-1-1

LOCATION	Building #56 Pure Spirits	<b>Floor:</b> 1/2	<b>Compass:</b> E
ITEM NAME	Wine Still C1910-20	<b>Quantity:</b> 1	
MARKINGS	(On inspection port plate) "BOOTH-COULTER" "COPPER & BRASS CO. LTD." "COPPERSMITHS & BRASSFOUNDERS, TORONTO, MONTREAL" Stencilled "WINE STILL" "728,716 CUB. INS." "2,628 GALS."		
MATERIALS	<b>Primary:</b> Formed and welded copper <b>Secondary:</b> Steel section flanges		
DIMENSIONS	<b>Height:</b> 14'	<b>Width:</b> 5'D	<b>Depth:</b>
CONDITION	Poor - out of service.		
USAGE	A. <b>Distillery:</b> Distillation of mash to low wines before rectification. B. <b>General:</b>		
SIGNIFICANCE	Central to operation of distillery.		

ITEM NO.  
56-1-2

LOCATION	Building #56 Pure Spirits	<b>Floor:</b> 1	<b>Compass:</b> S
ITEM NAME	Rectifying Column Still	<b>Quantity:</b> 1	
MARKINGS	Stencilled "RECT. COLUMN" "...,406 CUB. IN." "757 GALS."		
MATERIALS	<b>Primary:</b> Formed and welded copper sections (6) passing through several floors. <b>Secondary:</b> Steel section flanges		
DIMENSIONS	<b>Height:</b> 40'	<b>Width:</b> 3'D	<b>Depth:</b>
CONDITION	Poor, out of service.		
USAGE	A. <b>Distillery..</b> To redistill low wines to raise alcohol proof to final degree. B. <b>General:</b>		
SIGNIFICANCE	Central to distillery operation.		



56-1-3 Duplex Pump



56-2-4 Yeast Tub

			ITEM NO. 56-1-3
LOCATION	Building #56 Pure Spirits	<b>Floor:</b> 1	<b>Compass</b> S
ITEM NAME	Duplex Pump	<b>Quantity:</b> 1	
MARKINGS	(On plate) "SMART TURNER" "MACHINE CO." "HAMILTON, CANADA" "SIZE 6X5X7" "NO. 298 386"		
MATERIALS	<b>Primary:</b> Iron and steel castings Machined steel  <b>Secondary:</b>		
DIMENSIONS	<b>Height:</b> 2'6" <b>Width:</b> 4'6" <b>Depth:</b> 16"		
CONDITION	Poor, out of service.		
USAGE	A. <b>Distillery:</b> To pump liquids associated with distillery operations. Red paint possibly indicates fire protection use.  B. <b>General:</b>		
SIGNIFICANCE	Typical equipment associated with distillery operations.		

			ITEM NO. 56-2-4
LOCATION	Building #56 Pure Spirits	<b>Floor:</b> 2	<b>Compass:</b> SW
ITEM NAME	Yeast Tub	<b>Quantity:</b> 1	
MARKINGS	Paint Stencilled "YEAST TUB" "94,220 CUB. IN." "340 GALS."		
MATERIALS	<b>Primary:</b> Formed and rivetted copper  <b>Secondary:</b> Steel heating coil Brass tap		
DIMENSIONS	<b>Height:</b> 4'6" <b>Width:</b> 5'D <b>Depth:</b>		
CONDITION	Poor		
USAGE	A. <b>Distillery:</b> To hold yeast culture to inoculate mash.  B. <b>General:</b>		
SIGNIFICANCE	Central to distillery operations.		



56-2-5 Tail Box (Rectifying Still)



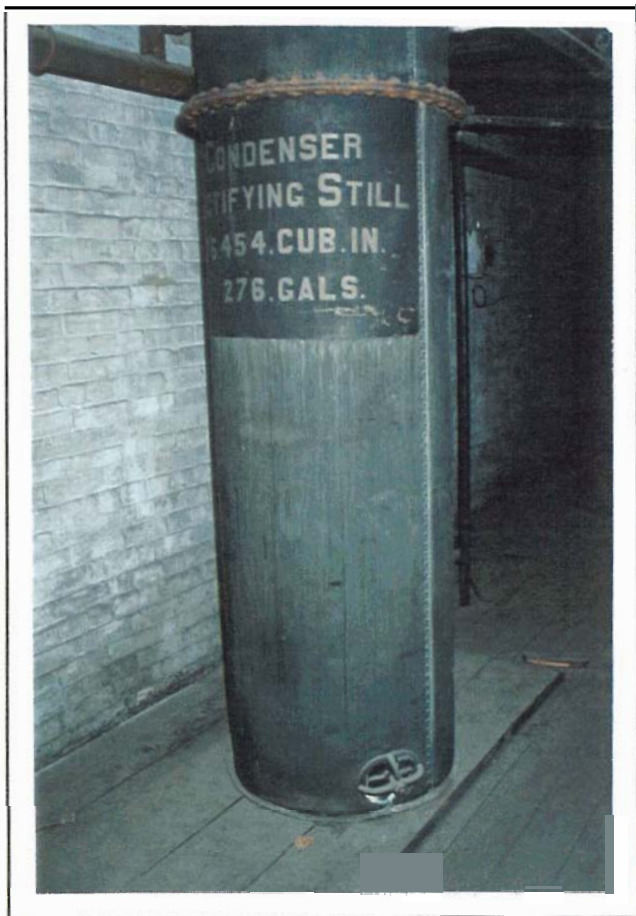
56-2-6 Tail Box (Wine Still)

ITEM NO.  
56-2-5

LOCATION	Building #56 Pure Spirits	<b>Floor:</b> 2	<b>Compass:</b> N
ITEM NAME	Tail Box (Rectifying Still)	<b>Quantity:</b> 1	
MARKINGS	None Observed		
MATERIALS	<b>Primary:</b> Cast and machined bronze <b>Secondary:</b> Glass flow tube		
DIMENSIONS	<b>Height:</b> 14"	<b>Width:</b> 7"D	<b>Depth:</b>
CONDITION	Poor, out of service. Glass cover missing.		
USAGE	A. <b>Distillery:</b> Provides method of assessing alcohol coming off rectifying still. Flow tube would hold hydrometer.  B. <b>General:</b>		
SIGNIFICANCE	Central to distillery operation. Alcohol at final strength flows through tail box to closed receivers.		

ITEM NO.  
56-2-6

LOCATION	Building #56 Pure Spirits	<b>Floor:</b> 2	<b>Compass:</b> N
ITEM NAME	Tail Box (Wine Still)	<b>Quantity:</b> 1	
MARKINGS	None Observed		
MATERIALS	<b>Primary:</b> Cast and machined bronze <b>Secondary:</b> Glass cover		
DIMENSIONS	<b>Height:</b> 15"	<b>Width:</b> 12"D	<b>Depth:</b>
CONDITION	Poor, out of service. Glass flow tube missing.		
USAGE	A. <b>Distillery:</b> Provides method of assessing alcohol coming off wine still. Flow tube would hold hydrometer.  B. <b>General:</b>		
SIGNIFICANCE	Central to distillery operation. Alcohol at low strength flows through tail box to rectifying still.		



56-3-7 Condenser



56-3-8 Condenser

ITEM NO.  
56-3-7

LOCATION	Building #56 Pure Spirits	<b>Floor:</b> 3	<b>Compass:</b> N
ITEM NAME	Condenser C1910	<b>Quantity:</b> 1	
MARKINGS	Stencilled	"CONDENSER" "RECTIFYING STILL" "76,454 CUB. IN." "276 GALS."	
MATERIALS	<b>Primary..</b> Formed and rivetted copper <b>Secondary..</b> Steel flanges between sections		
DIMENSIONS	<b>Height:</b> 10'	<b>Width:</b> 30"D	<b>Depth:</b>
CONDITION	Out of service		
USAGE	A. <b>Distillery..</b> Condenses to liquid high alcohol vapour from rectifying still. B. <b>General:</b>		
SIGNIFICANCE	Central to distillery operations.		

ITEM NO.  
56-3-8

LOCATION	Building #56 Pure Spirits	<b>Floor:</b> 3	<b>Compass:</b> E
ITEM NAME	Condenser	<b>Quantity:</b> 1	
MARKINGS	Stencilled	"CONDENSER RYE STILL" "101,788 CUB. IN." "367 GALS."	
MATERIALS	<b>Primary:</b> Formed and rivetted copper <b>Secondary:</b> Steel flanges between sections		
DIMENSIONS	<b>Height:</b> 10'11"	<b>Width:</b> 32"D	<b>Depth:</b>
CONDITION	Out of service		
USAGE	A. <b>Distillery:</b> Condenses alcohol vapour from rye still. B. <b>General:</b>		
SIGNIFICANCE	Central to distillery operations.		



56-4-9 Dephlegmator



56-4-10 Doubler Rye Still

				<b>ITEM NO.</b> 56-4-9
LOCATION	Building #56 Pure Spirits	<b>Floor:</b> 4	<b>Compass:</b> W	
ITEM NAME	Dephlegmator C1900	<b>Quantity:</b> 1		
MARKINGS	Stencilled "DEPHLEGMATOR" "12,370 CU. IN." "44 GALS."			
MATERIALS	<b>Primary:</b> Formed and rivetted copper <b>Secondary..</b> Steel flanges Wood framed stand			
DIMENSIONS	<b>Height:</b> 5'6"	<b>Width:</b> 20"D	<b>Depth:</b>	
CONDITION	Out of service			
USAGE	A. <b>Distillery:</b> Used to condense less volatile alcohols, possibly before passing to rectifying condenser. B. <b>General:</b>			
SIGNIFICANCE	Central to period distillery operations.			

				<b>ITEM NO.</b> 56-4-10
LOCATION	Building #56 Pure Spirits	<b>Floor:</b> 4	<b>Compass</b> E	
ITEM NAME	Doubler Rye Still C1900	<b>Quantity:</b> 1		
MARKINGS	Stencilled "DOUBLER RYE STILL" "30,474 CUB. IN." "110 GALS."			
MATERIALS	<b>Primary:</b> Formed and rivetted copper <b>Secondary..</b> Steel flanges Sight guage, brass valves and glass			
DIMENSIONS	<b>Height:</b> 8'	<b>Width:</b> 24"D	<b>Depth:</b>	
CONDITION	Out of service			
USAGE	A. <b>Distillery:</b> Used to redistill low alcohols to produce higher alcohols. B. <b>General:</b>			
SIGNIFICANCE	Central to distillery operations.			