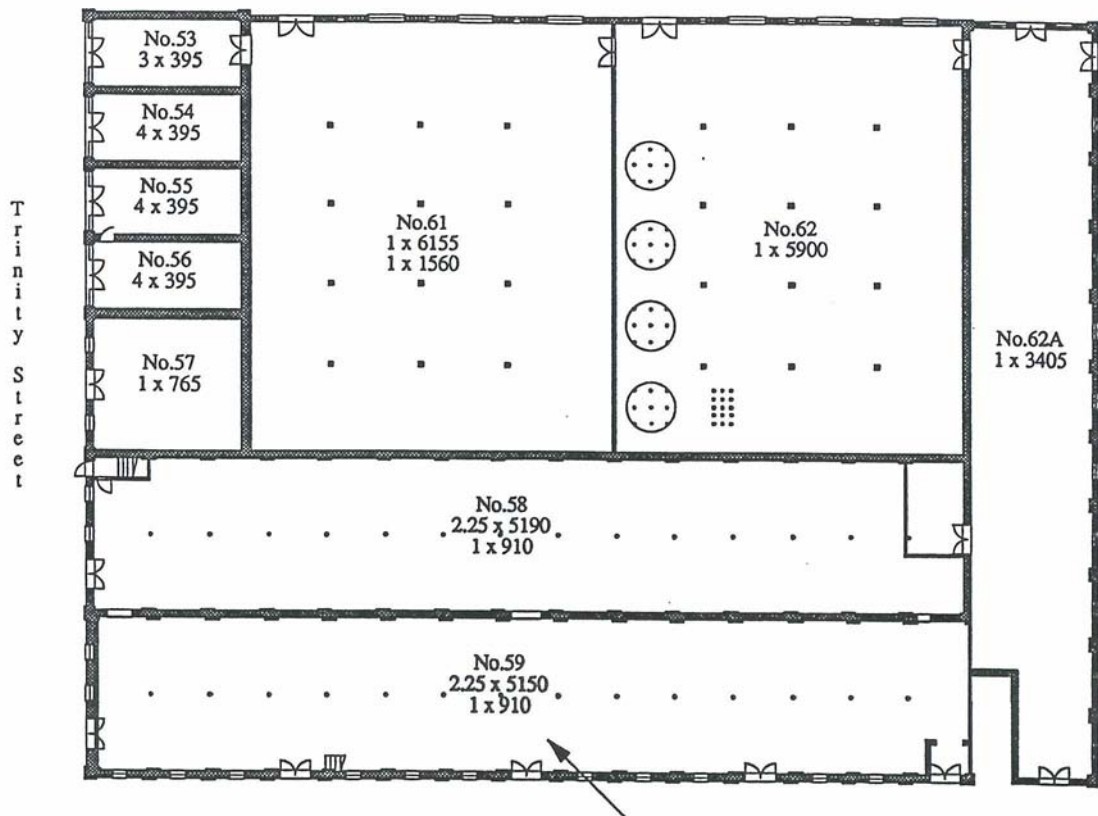


GROUP C: Pure Spirits Complex Floor Plan



EQUIPMENT SUMMARY

BUILDING #58

Floor 1
 58-1-1 Gear Pump
 58-1-2 Foil Crimper
 58-1-3 Table Scale
 58-1-4 Telephone
 58-1-5 Yeast Tub
 58-1-617 Hand Canners
 58-1-819 Hose Nozzles
 58-1-10/11 " "
 58-1-12 Gas Can
 58-1-13 Patterns
 58-1-14 Bung Pullers
 58-1-15116 Hoop Drivers
 58-1-17 Stencils
 58-1-18 Funnels
 58-1-19 Pails
 58-1-20 Anvil
 58-1-21 Taps
 58-1-22 Barrel Thief
 58-1-23 Hydrometers
 58-4-1 Tank Scale
 58-4-2/3 Mixers

BUILDING #61

Floor 1
 61-1-1 Platform Scale
 61-1-2 Pad Filter
 61-1-3 Pad Filter
 61-1-4 Pad Filter
 61-1-5 Pad Filter
 61-1-6 Duplex Pump
 61-1-7 Duplex Pump
 61-1-8 Spirit Tank
 61-1-9 Duplex Pump
 61-1-10 Explosion Proof
 Fixtures
 61-2-1 Water Still
 61-2-213 Tanks
 61-2-4/5/6 Tank Scales

BUILDING #62

62-1-1 Dip Stick
 62-1-2 Wardrobe

BUILDING #62A

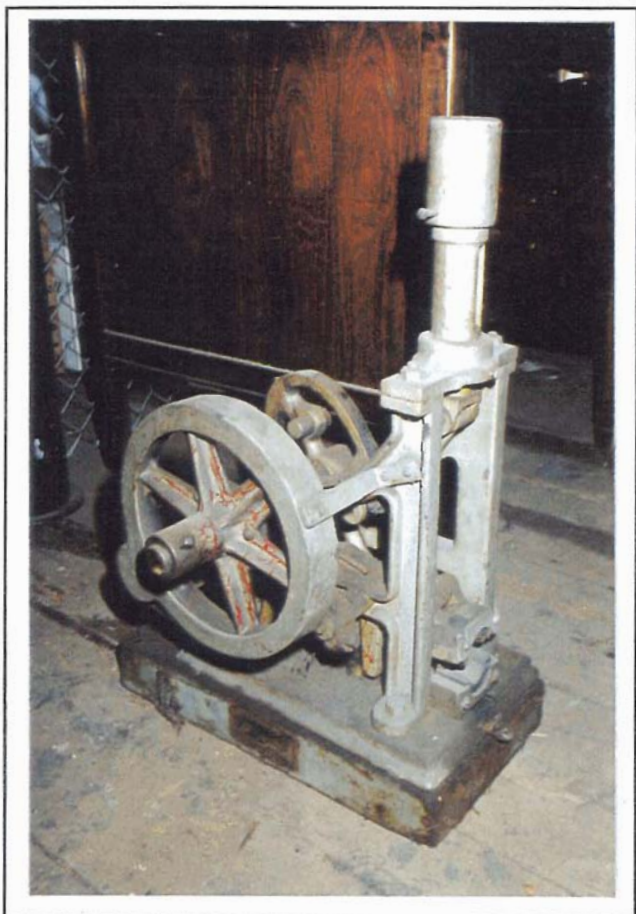
62A-1-1 Floor Scale
 62A-1-2 Duplex Pump
 62A-1-3 Barrel Ramp
 62A-1-4 Barrel Ramp

BUILDING #59

No Equipment Observed



58-1-1 Gear Pump



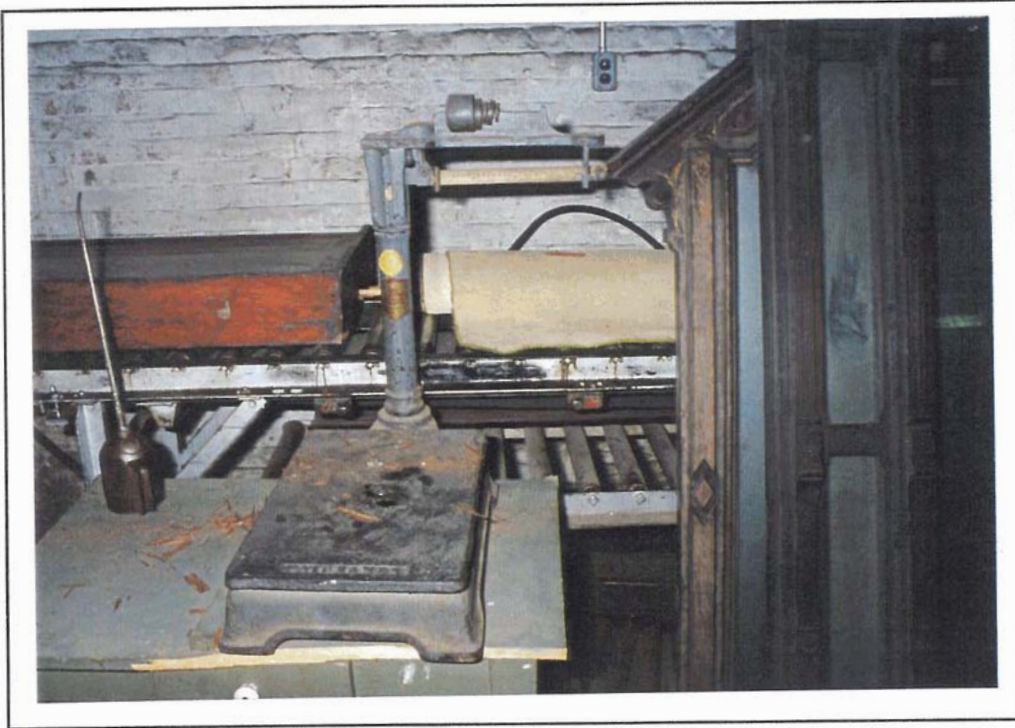
58-1-2 Foil Crimper

ITEM NO.
58-1-1

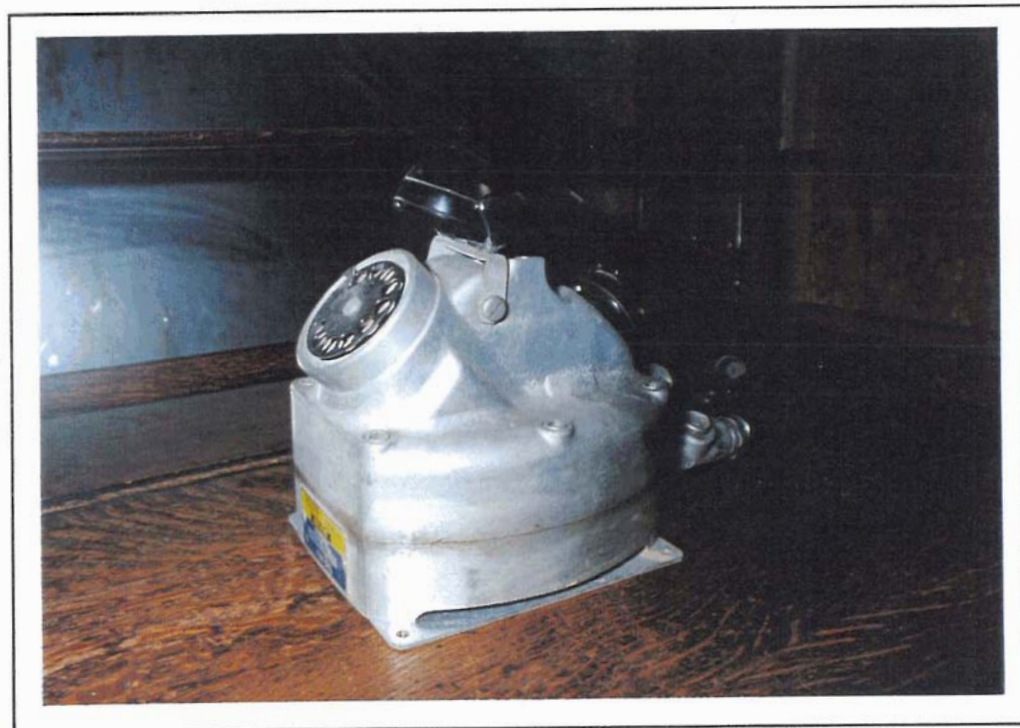
LOCATION	Building #58 Cannery	Floor: I	Compass: S
ITEM NAME	Gear Pump C1910	Quantity: 1	
MARKINGS	(On plate) "BOWSER" "SELF MEASURING PUMP & OIL STORAGE SYSTEMS" "SF BOWSER CO. TORONTO" "PATENTED OCT 26 09, DEC. 13 1910"		
MATERIALS	Primary: Cast and machined steel Secondary: Brass tap		
DIMENSIONS	Height: 5'	Width: 20"	Depth: 10"
CONDITION	Serviceable		
USAGE	A. Distillery: B. General: Unknown		
SIGNIFICANCE			

ITEM NO.
58-1-2

LOCATION	Building #58 Cannery	Floor: 1	Compass: S
ITEM NAME	Foil Crimper C1900-10	Quantity: 1	
MARKINGS	None Observed		
MATERIALS	Primary: Iron casting and machined steel Secondary:		
DIMENSIONS	Height: 24"	Width: 18"	Depth: 9"
CONDITION	Serviceable		
USAGE	A. Distillery: Used to crimp (lead) foil neck wrap after corking of bottles. B. General:		
SIGNIFICANCE	Central to distillery bottling operations. One of the very few artifacts remaining from bottling operations.		



58-1-3 Table Scale



58-1-4 Telephone - Explosion Proof

ITEM NO.
58-1-3

LOCATION	Building #58 Cannery	Floor: 1	Compass: S
ITEM NAME	Table Scale C1910-20	Quantity: 1	
MARKINGS	Cast Beam	"FAIRBANKS" "FAIRBANKS"	
MATERIALS	Primary: Cast iron base and column Secondary: Brass beam Iron weights		
DIMENSIONS	Height: 29"	Width: 22"	Depth: 25"
CONDITION	Out of Service		
USAGE	A. Distillery: B. General: Unknown		
SIGNIFICANCE			

ITEM NO.
58-1-4

LOCATION	Building #58 Cannery	Floor: 1	Compass: S
ITEM NAME	Telephone - Explosion Proof C1960	Quantity: 1	
MARKINGS	(On plate)	"NORTHERN TELECOM"	
MATERIALS	Primary: Cast aluminum body Secondary: Bakelite hand set		
DIMENSIONS	Height: 16"	Width: 10"	Depth: 10"
CONDITION	Serviceable		
USAGE	A. Distillery: Because of the danger of explosion of alcohol vapours, all electrical equipment had to be of explosion-proof construction. B. General:		
SIGNIFICANCE	Central to distillery operating conditions.		



58-1-5 Yeast Tub



58-1-6/7 Hand Cannors

ITEM NO.
58-1-5

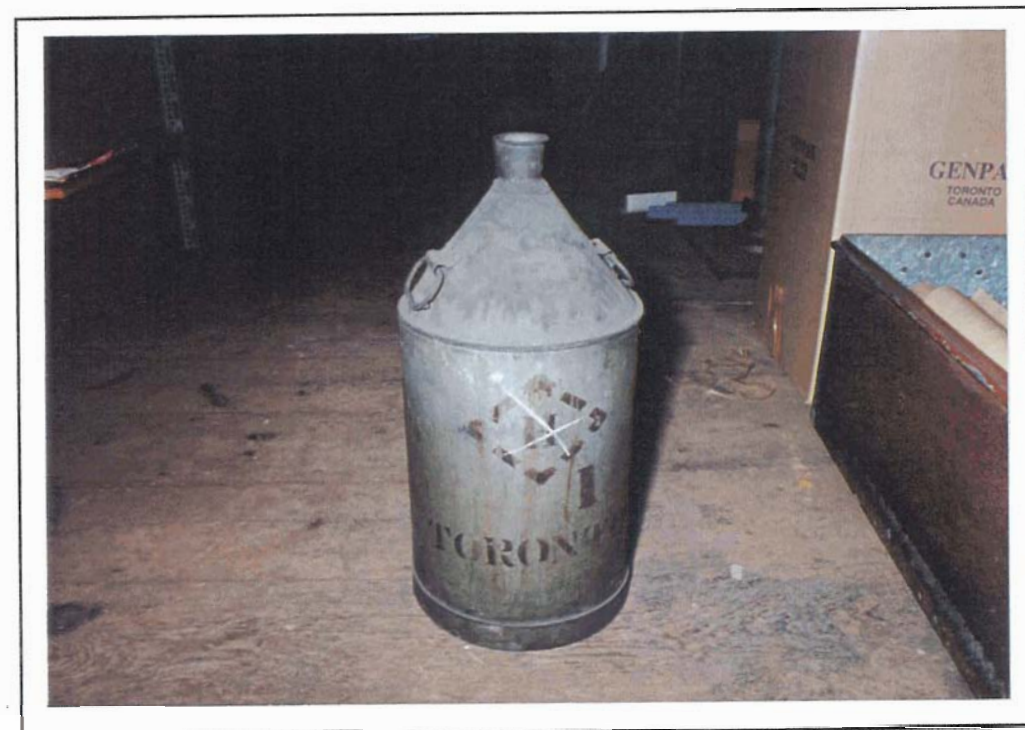
LOCATION	Building #58 Cannery	Floor: 1	Compass: SE
ITEM NAME	Yeast (?) Tub C1900-10	Quantity: 1	
MARKINGS	None Observed		
MATERIALS	Primary: Formed and welded copper Secondary: Steel handles		
DIMENSIONS	Height: 2"	Width: 18'D	Depth:
CONDITION	Serviceable		
USAGE	A. Distillery: Used to transfer yeast culture to fermenting vats. B. General:		
SIGNIFICANCE	Central to distillery operations.		

ITEM NO.
58-1-6/7

LOCATION	Building #58 Cannery	Floor: 1	Compass: SE
ITEM NAME	Hand Canners	Quantity: 2	
MARKINGS	None Observed		
MATERIALS	Primary.. Cast and machined steel Secondary:		
DIMENSIONS	Height: 16"	Width: 3-5"	Depth:
CONDITION	Serviceable		
USAGE	A. Distillery: B. General: Associated with the antifreeze operation. To hand crimp lids on cans.		
SIGNIFICANCE			



58-1-819 Fire Hose
58-1-10111 Nozzles



58-1-12 Gas (Acid) Can

ITEM NO.
58-1-8/9
58-1-10/11

LOCATION Building #58 Cannery **Floor:** 1 **Compass:** SE

ITEM NAME Fire Hose Nozzles C1900 **Quantity:** 4

MARKINGS None Observed

MATERIALS **Primary:** Machined and cast bronze
Secondary: Cord wrapping

DIMENSIONS **Height:** 2-3' **Width:** 2-3" **Depth:**

CONDITION Serviceable

USAGE **A. Distillery:**
B. General: Fire protection

SIGNIFICANCE

ITEM NO.
58-1-12

LOCATION Building #58 Cannery **floor:** 1 **Compass** SE

ITEM NAME Gas (Acid) Can C1910 **Quantity:** 1

MARKINGS Stencilled "H" "TORONTO"

MATERIALS **Primary:** Formed and soldered tin
Secondary: Steel handles

DIMENSIONS **Height:** 24" **Width:** 10"D **Depth:**

CONDITION Serviceable

USAGE **A. Distillery:**
B. General: Unknown

SIGNIFICANCE



58-1-13 Foundry Patterns



58-1-14 Bung Pullers

ITEM NO.
58-1-13

LOCATION	Building #58 Cannery	Floor: 1	Compass SE
ITEM NAME	Foundry Patterns C1880	Quantity: Quant.	
MARKINGS	None Observed		
MATERIALS	Primary: Painted wood Secondary:		
DIMENSIONS	Height: Var	Width: Var.	Depth:
CONDITION	Serviceable		
USAGE	A. Distillery B. General: Retained by the distillery to reproduce cast machine parts as required.		
SIGNIFICANCE	Central to maintenance function.		

ITEM NO.
58-1-14

LOCATION	Building #58 Cannery	Floor: 1	Compass: NE
ITEM NAME	Bung Pullers C1930	Quantity: 4	
MARKINGS	None Observed		
MATERIALS	Primary: Bronzebody Secondary: Steel screw		
DIMENSIONS	Height:	Width: 11"L	Depth: 5"
CONDITION	Serviceable		
USAGE	A. Distillery: To remove wooden barrel bungs to permit sampling. B. General:		
SIGNIFICANCE	Central to distillery maturing operations.		



58-1-15/16 Hoop Drivers



58-1-17 Barrel Head Stencils

ITEM NO.
58-1-15/16

LOCATION	Building #58 Cannery	Floor: 1	Compass: NE
ITEM NAME	Hoop Drivers	Quantity: 2	
MARKINGS	Cast	"J. STORTZ TOOLS PHILA."	
MATERIALS	Primary: Cast and forged steel Secondary: Wood handle		
DIMENSIONS	Height: Var.	Width:	Depth:
CONDITION	Serviceable		
USAGE	A. Distillery: The all steel driver is used to tighten head hoop; the other is used to tighten body (bilge) hoops. B. General:		
SIGNIFICANCE	Central to distillery maturing operations, specifically cooperage.		

ITEM NO.
58-1-17

LOCATION	Building #58 Cannery	Floor: 1	Compass: NE
ITEM NAME	Barrel Head Stencils	Quantity: Quantity	
MARKINGS	Cut Stencil	"GOODERHAM & WORTS" "TORONTO"	
MATERIALS	Primary: Brass and press board Secondary..		
DIMENSIONS	Height:	Width: 21"D	Depth:
CONDITION	Serviceable		
USAGE	A. Distillery: Used to stencil identification on barrel heads. B. General:		
SIGNIFICANCE	Central to distillery operations, maturing.		



58-1-18 Funnels



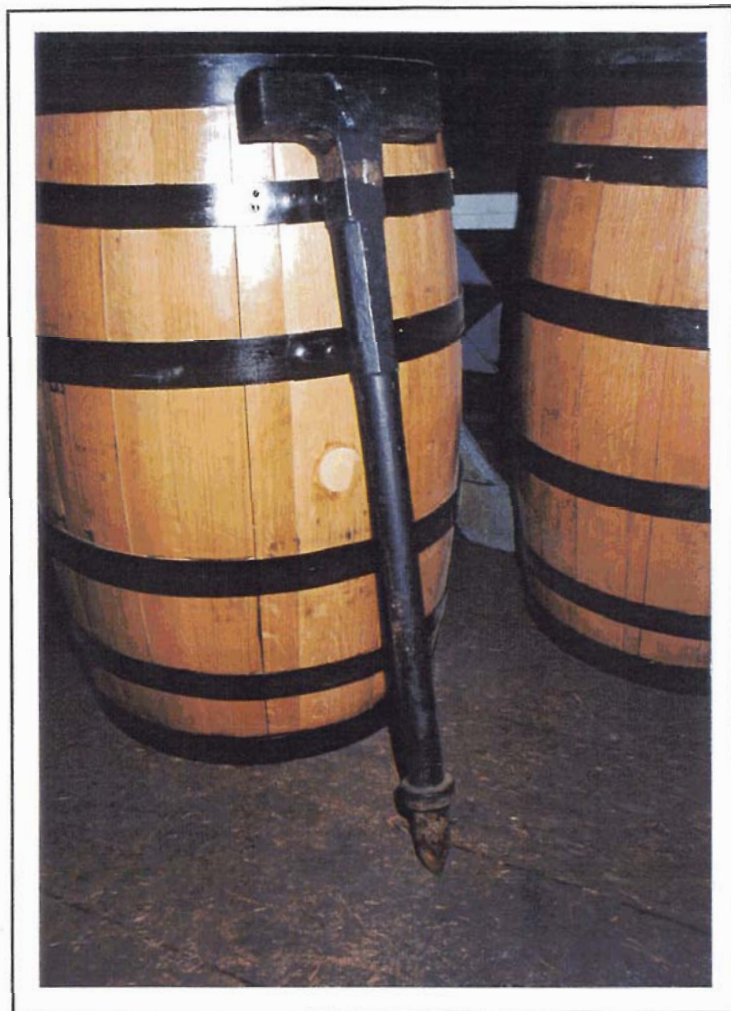
58-1-19 Sampling Pails

ITEM NO.
58-1-18

LOCATION	Building #58 Cannery	<i>Floor:</i> 1	<i>Compass</i> NE
ITEM NAME	Funnels	<i>Quantity:</i> 7	
MARKINGS	None Observed		
MATERIALS	<i>Primary:</i> Formed and welded copper <i>Secondary:</i>		
DIMENSIONS	<i>Height:</i> Var.	<i>Width:</i>	<i>Depth:</i>
CONDITION	Poor		
USAGE	A. <i>Distillery:</i> Used to facilitate topping of barrels. B. <i>General:</i>		
SIGNIFICANCE	Central to distillery maturing operations.		

ITEM NO.
58-1-19

LOCATION	Building #58 Cannery	<i>Floor:</i> 1	<i>Compass:</i> NE
ITEM NAME	Sampling Pails	<i>Quantity..</i> 6	
MARKINGS	None Observed		
MATERIALS	<i>Primary:</i> Formed and welded copper <i>Secondary:</i> Brass and steel handles		
DIMENSIONS	<i>Height:</i> Var.	<i>Width:</i>	<i>Depth:</i>
CONDITION	Poor		
USAGE	A. <i>Distillery:</i> Used to transport samples of mash or distillate. B. <i>General:</i>		
SIGNIFICANCE	Central to distillery operations.		



58-1-20 Coopers Rivetting Anvil



58-1-21 Tank Taps

ITEM NO.
58-1-20

LOCATION	Building #58 Cannery	<i>floor:</i> 1	<i>Compass:</i> NE
ITEM NAME	Coopers Rivetting Anvil C1880-90	<i>Quantity:</i> 1	
MARKINGS	None Observed		
MATERIALS	<i>Primary:</i> Forged steel <i>Secondary:</i>		
DIMENSIONS	<i>Height:</i> 35"	<i>Width:</i> 8"	<i>Depth:</i> 2"
CONDITION	Serviceable		
USAGE	A. <i>Distillery:</i> Used to head rivets when making hoops for barrels. B. <i>General:</i>		
SIGNIFICANCE	Central to cooperage function,		

ITEM NO.
58-1-21

LOCATION	Building #58 Cannery	<i>Floor:</i> 1	<i>Compass:</i> NE
ITEM NAME	Tank Taps C1910	<i>Quantity:</i> 2	
MARKINGS	None Observed		
MATERIALS	<i>Primary:</i> Cast bronze <i>Secondary:</i> Steel handle		
DIMENSIONS	<i>Hwght:</i> 6"	<i>Width:</i> 10"	<i>Depth:</i> 1 1/2"
CONDITION	Poor		
USAGE	A. <i>Distillery:</i> Installed in tanks to permit emptying. B. <i>General:</i>		
SIGNIFICANCE	Central to distillery operations.		



58-1-22 Barrel Thief



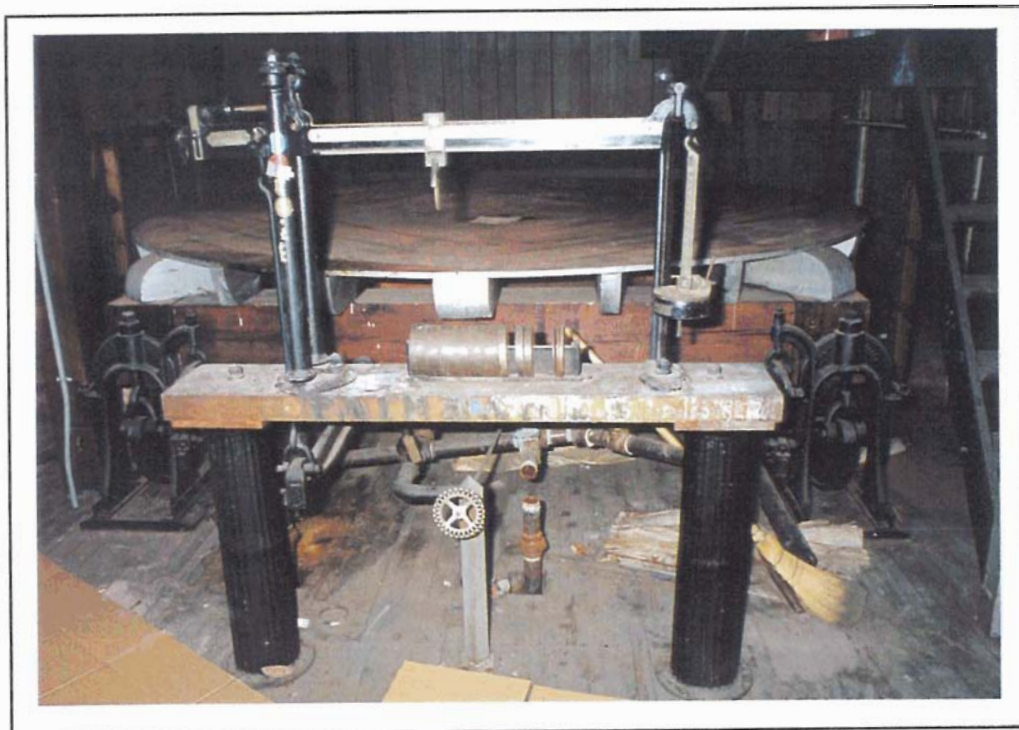
58-1-23 Hydrometers and Thermometers

ITEM NO.
58-1-22

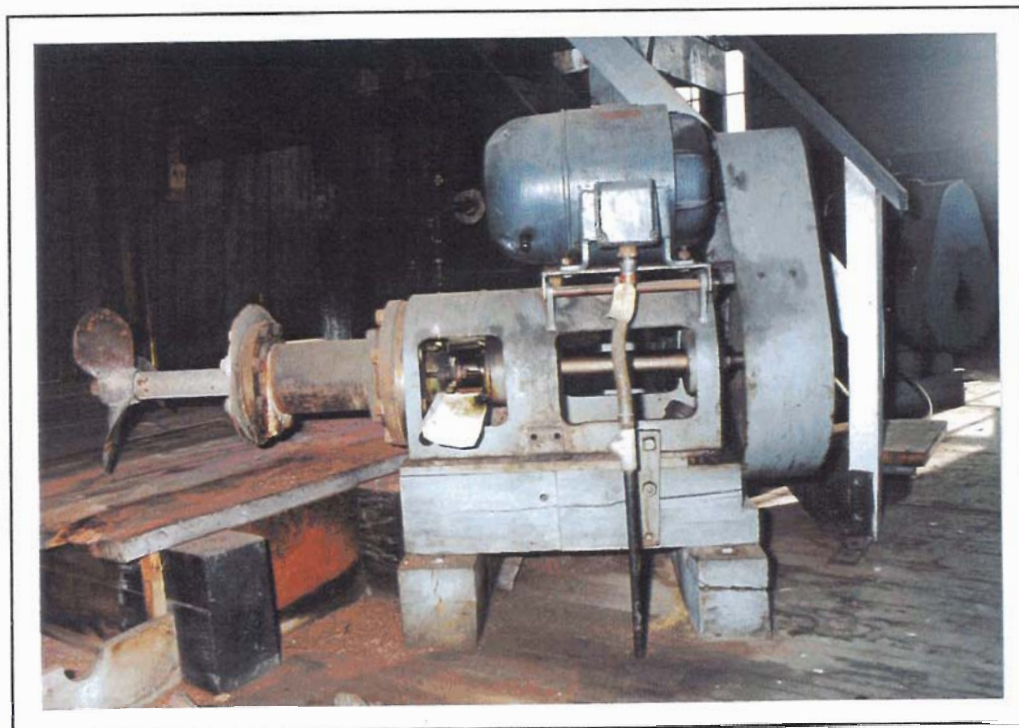
LOCATION	Building #58 Cannery	floor: 1	Compass: NE
ITEM NAME	Barrel Thief	Quantity: 1	
MARKINGS	None Observed		
MATERIALS	Primary: Copper tube Secondary.. Brass check valve		
DIMENSIONS	Height: 38"	Width: 1 1/2"D	Depth:
CONDITION	Serviceable		
USAGE	A. Distillery: Used to draw samples through bung hole of barrels. B. General:		
SIGNIFICANCE	Central to distillery operations.		

ITEM NO.
58-1-23

LOCATION	Building #58 Cannery	Floor: 1	Compass NE
ITEM NAME	Hydrometers and Thermometers	Quantity: 5 + 5	
MARKINGS	Var.		
MATERIALS	Primary: Glass and plated metal Secondary:		
DIMENSIONS	Height: Var.	Width:	Depth:
CONDITION	Serviceable		
USAGE	A. Distillery: Hydrometers used to measure alcohol strength at a given measured temperature. B. General:		
SIGNIFICANCE	Related to distillery quality central operations.		



58-4-1 Tank Scale



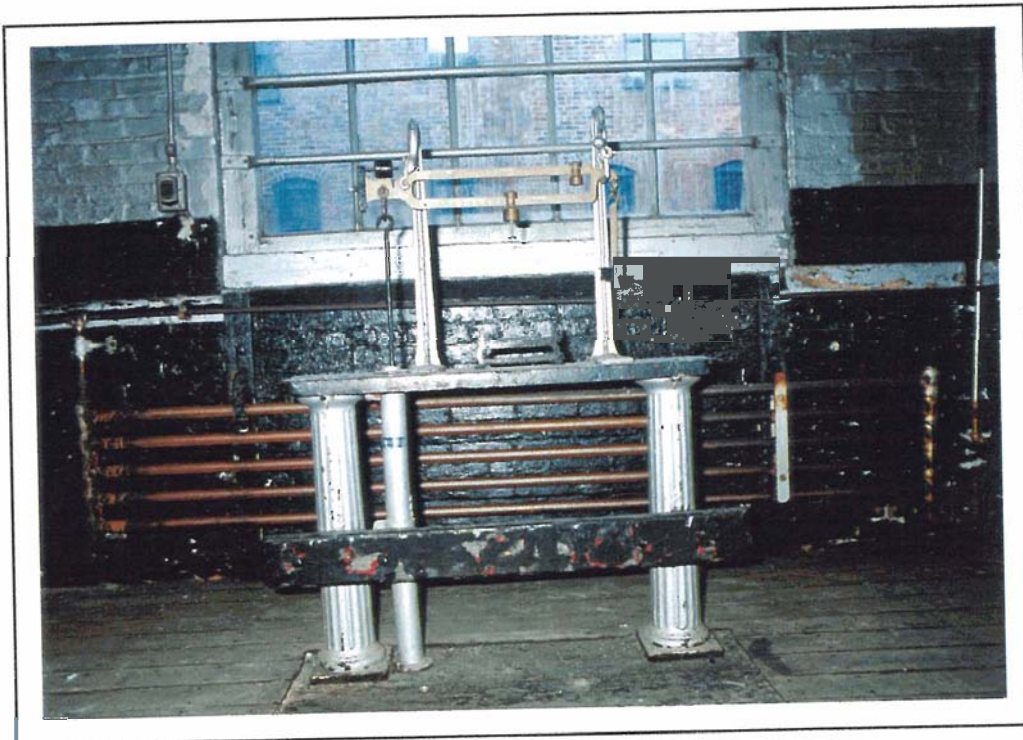
58-4-2/3 Tank Mixers

ITEM NO.
58-4-1

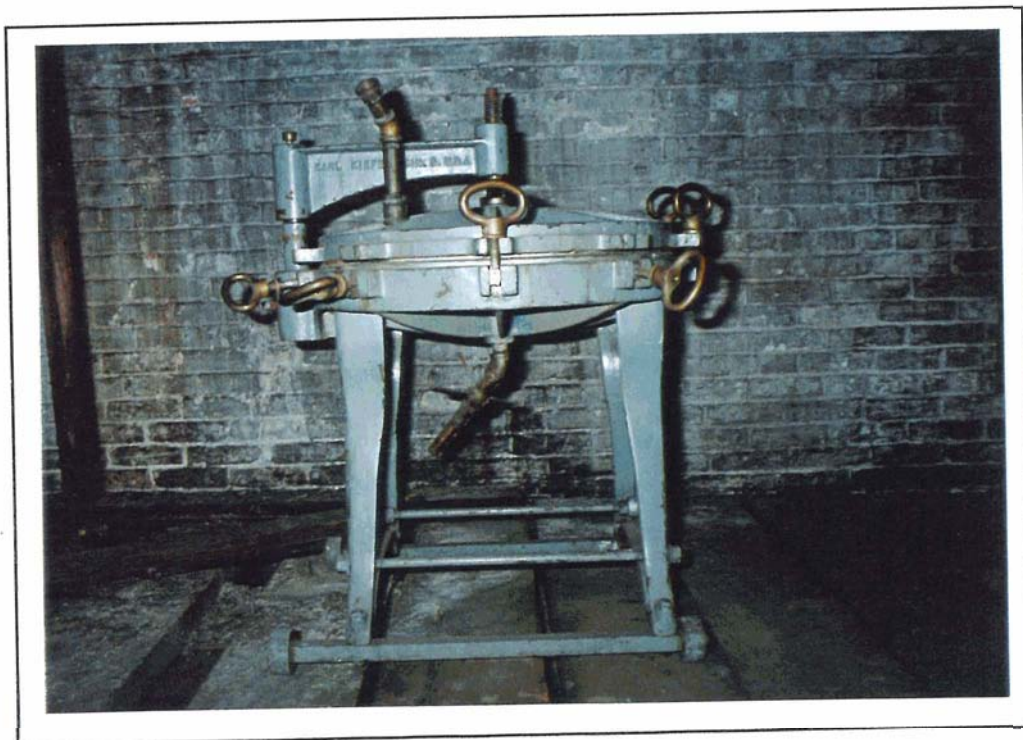
LOCATION	Building #58 Cannery	Floor: 4	Compass NW
ITEM NAME	Tank Scale C1898	Quantity: 1	
MARKINGS	(On plate) Beam Stencilled	"FAIRBANKS NO. 20430" "PATENT JAN. 18, 1898" "FAIRBANKS"	
MATERIALS	Primary:	Cast iron fluted columns Cast linkage and pivot towers	
	Secondary:	Steel and nickel plated steel beam	
DIMENSIONS	Height: 70"	Width: 63"	Depth: 12"
CONDITION	Out of service		
USAGE	A. Distillery:		
	B. General:	This scale was associated with the cannery operation.	
SIGNIFICANCE			

ITEM NO.
58-4-2/3

LOCATION	Building #58 Cannery	floor: 4	Compass: S
ITEM NAME	Tank Mixers	Quantity: 2	
MARKINGS	(On Plate)	"GREEY MIXCO AGITATOR" "WILLIAM J G GREEY LIMITED" "ESPLANADE, TORONTO"	
MATERIALS	Primary:	Cast and machined steel Electric motor	
	Secondary	Steel agitator	
DIMENSIONS	Height: 46"	Width: 52"	Depth: 24"
CONDITION	Out of service		
USAGE	A. Distillery:		
	B. General:	To agitate contents of storage tanks.	
SIGNIFICANCE			



61-1-1 Floor Scale



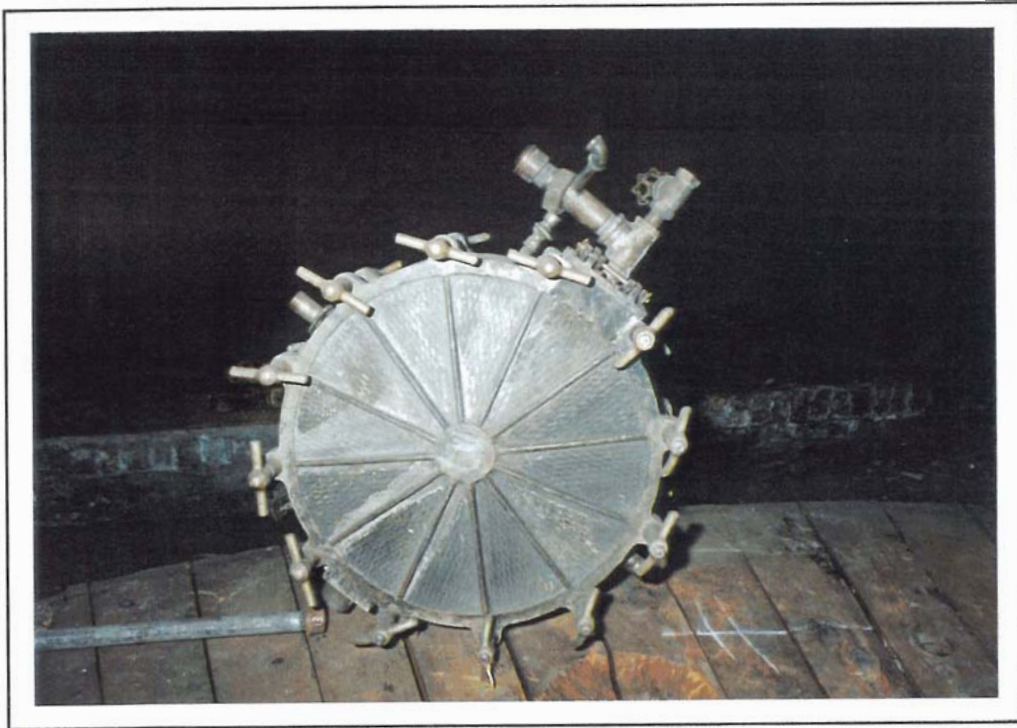
61-1-2/3 Mobile Pad Filter

ITEM NO.
61-1-1

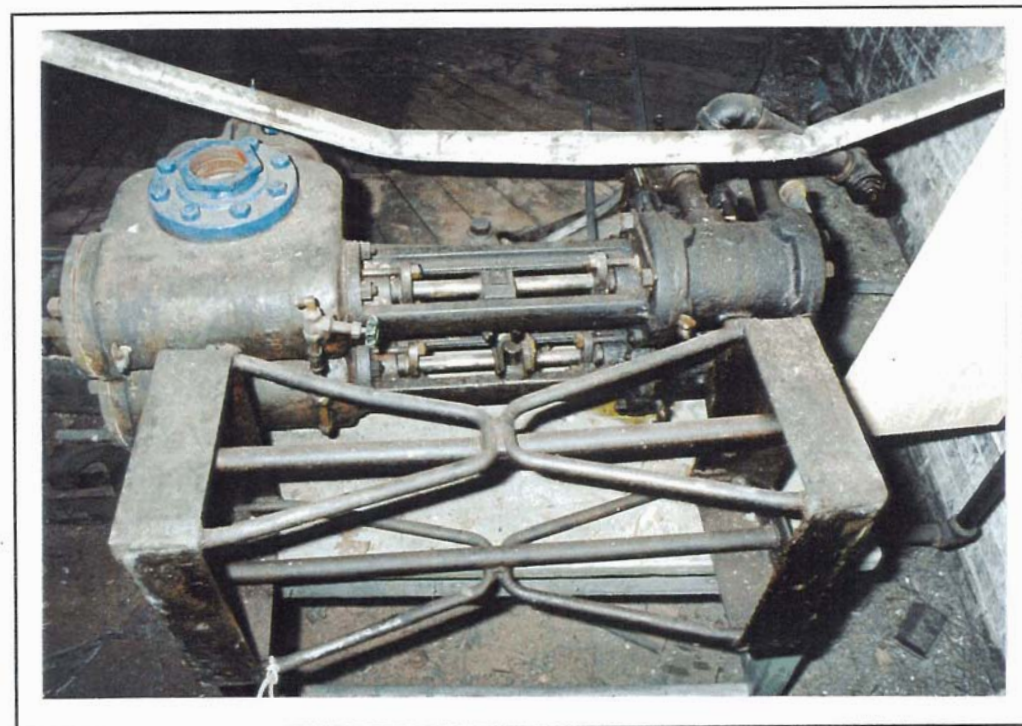
LOCATION	Building #61 Mixing	Floor: 1	Compass: N
ITEM NAME	Floor Scale C1910-20	Quantity: 1	
MARKINGS	Cast into columns "328"		
MATERIALS	Primary: Cast iron fluted columns Steel linkages and pivot towers Secondary: Brass balance beam Steel platen		
DIMENSIONS	Height: 5'	Width: 4'	Depth: 16"
CONDITION	Serviceable		
USAGE	A. Distillery: To weigh filled barrels for excise. B. General:		
SIGNIFICANCE	Central to distillery operations. Indicative of the role of excise control.		

ITEM NO.
61-1-2
61-1-3

LOCATION	Building #61 Mixing	Floor: 1	Compass: NE
ITEM NAME	Mobile Pad Filter C1920-30	Quantity: 2	
MARKINGS	Cast into swing arm	"KARL KIEFER CIN. O. USA"	
MATERIALS	Primary.. Blue painted iron castings Secondary.. Cast bronze locking handles Brass pipe		
DIMENSIONS	Height: 3'	Width: 24"D	Depth:
CONDITION			
USAGE	A. Distillery: Used to filter spirits before or after blending. B. General:		
SIGNIFICANCE	Central to distillery operation.		



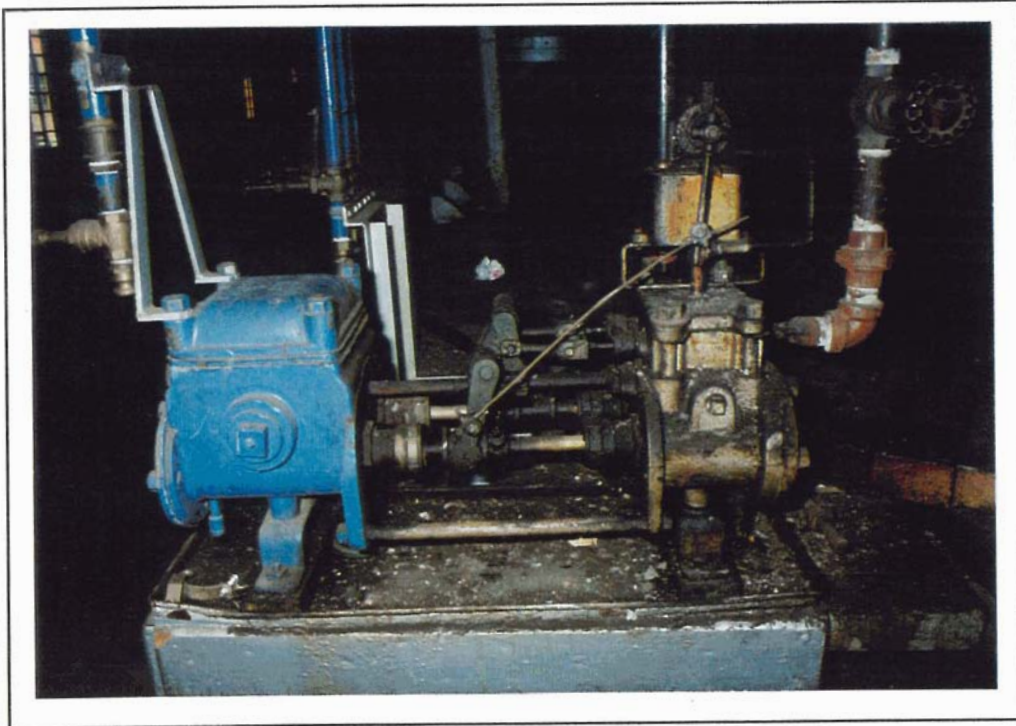
61-1-415 Pad Filter



61-1-6 Duplex Pump

				ITEM NO. 61-1-4 61-1-5
LOCATION	Building #61 Mixing	Floor: 1	Compass: SW	
ITEM NAME	Pad Filter C1930	Quantity: 2		
MARKINGS	None Observed			
MATERIALS	Primary: Cast and machined plated bronze (?) Secondary: Bronze "T" handles Brass pipes			
DIMENSIONS	Height: 10"	Width: 20"D	Depth:	
CONDITION	Out of service			
USAGE	A. Distillery: Filtration of spirits before and after blending. B. General:			
SIGNIFICANCE	Central to distillery operation. Dislocated from place of installation.			

				ITEM NO. 61-1-6
LOCATION	Building #61 Mixing	Floor: 1	Compass: SW	
ITEM NAME	Duplex Pump C1920-30	Quantity: 1		
MARKINGS	"DEAN BROS. INDIANAPOLIS IND."			
MATERIALS	Primary: Steel castings Secondary: Fabricated steel base Brass pipe			
DIMENSIONS	Height: 2'	Width: 4'	Depth: 18"	
CONDITION	Out of service			
USAGE	A. Distillery= Blue paint indicates use to pump alcohol. B. General:			
SIGNIFICANCE	Central to distillery operations. Alcohol transfer.			



61-1-7 Duplex Pump



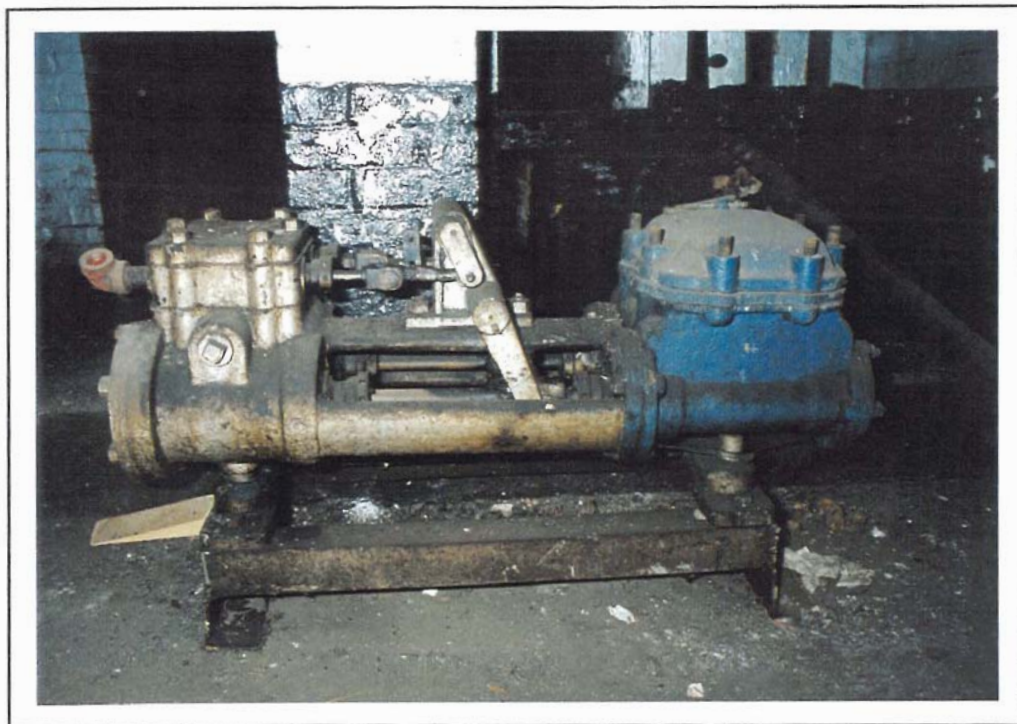
61-1-8 Spirit Tank

ITEM NO.
61-1-7

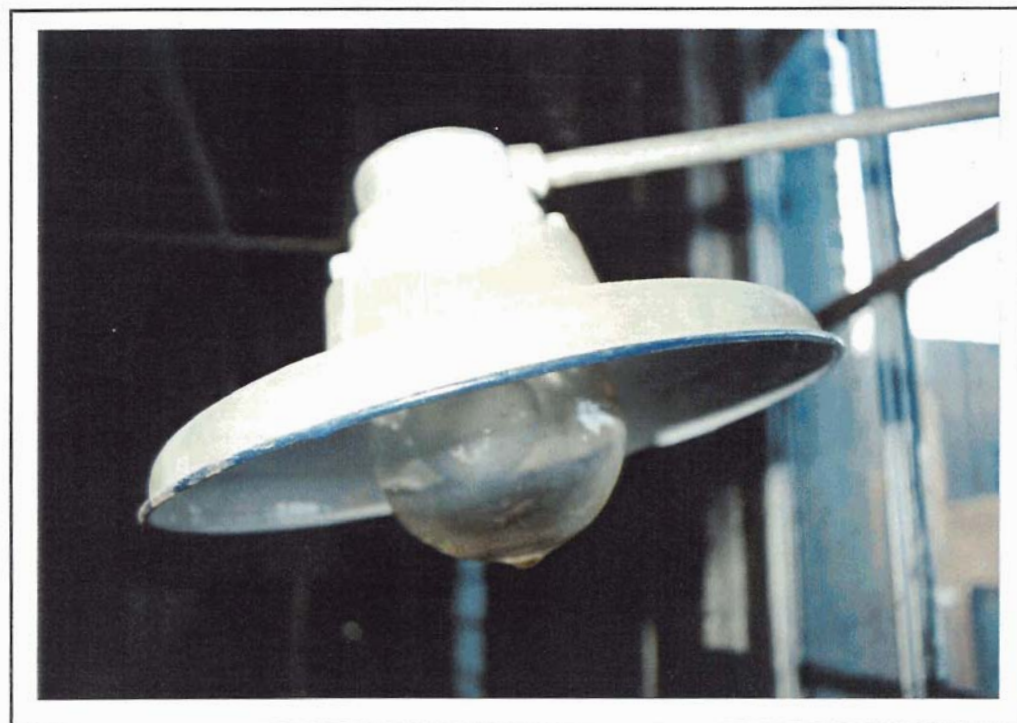
LOCATION	Building #61 Mixing	floor: 1	Compass:- NW
ITEM NAME	Duplex Pump C1920-30	Quantity: 1	
MARKINGS	In casting	"F. LEPPER & SON, TORONTO"	
MATERIALS	Primary.. Steel and machined iron castings Secondary,. Brass and steel oiler Brass valves and copper pipe Iron steam pipe		
DIMENSIONS	Height: 2'	Width: 2'6"	Depth: 16"
CONDITION	Out of service		
USAGE	A. Distillery= Blue paint indicates use to pump alcohol. B. General:		
SIGNIFICANCE	Central to distillery operations. Alcohol transfer.		

ITEM NO.
61-1-8

LOCATION	Building #61 Mixing	floor: 1	Compass: N
ITEM NAME	Spirit Tank	Quantity: 1	
MARKINGS	Stencilled	"NO. 16A" "SPIRIT TANK" "2,350 LITRES"	
MATERIALS	Primary: Formed and rivetted copper Secondary: Brass valves and copper pipe		
DIMENSIONS	Height: 6'	Width: 3'D	Depth:
CONDITION	Out of service		
USAGE	A. Distillery: Used to store small quantity of alcohol. B. General:		
SIGNIFICANCE	Part of mixing process.		



61-1-9 Duplex Pump



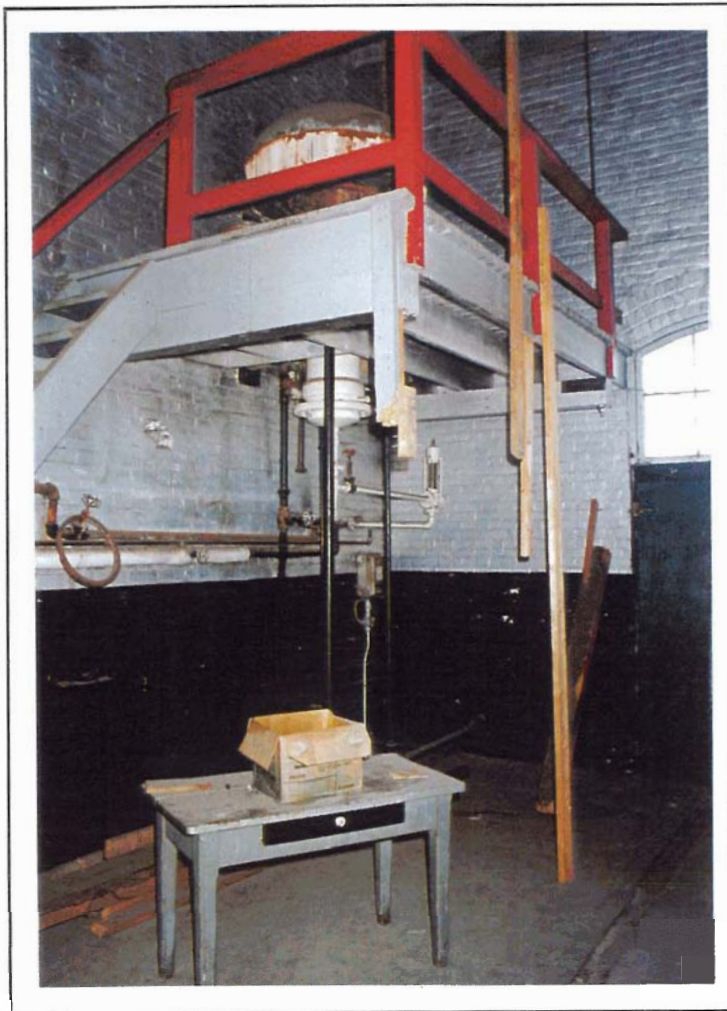
61-1-10 Explosion Proof Light Fixtures

ITEM NO.
61-1-9

LOCATION	Building #61 Mixing	Floor: Sub	Compass: N
ITEM NAME	Duplex Pump	Quantity: 1	
MARKINGS	In casting	"DEAN BROS. IND."	
MATERIALS	Primary: Steel and machined iron castings Secondary:		
DIMENSIONS	Height: 2'	Width: 3'	Depth: 14"
CONDITION	Out of service - incomplete		
USAGE	A. Distillery: Blue paint indicates use to pump alcohol. B. General:		
SIGNIFICANCE	Central to distillery operations. Alcohol transfer.		

ITEM NO.
61-1-10

LOCATION	Building #61 Mixing	Floor: 1	Compass:
ITEM NAME	Explosion Proof Light Fixtures	Quantity: 23	
MARKINGS	None observed		
MATERIALS	Primary: Enamelized steel Secondary: Glass globe		
DIMENSIONS	Height: Var.	Width:	Depth:
CONDITION	Serviceable		
USAGE	A. Distillery: Illumination of mixing room. B. General:		
SIGNIFICANCE	Presence of alcohol vapours requires the use of explosion proof fixtures.		



61-2-1 Water Still



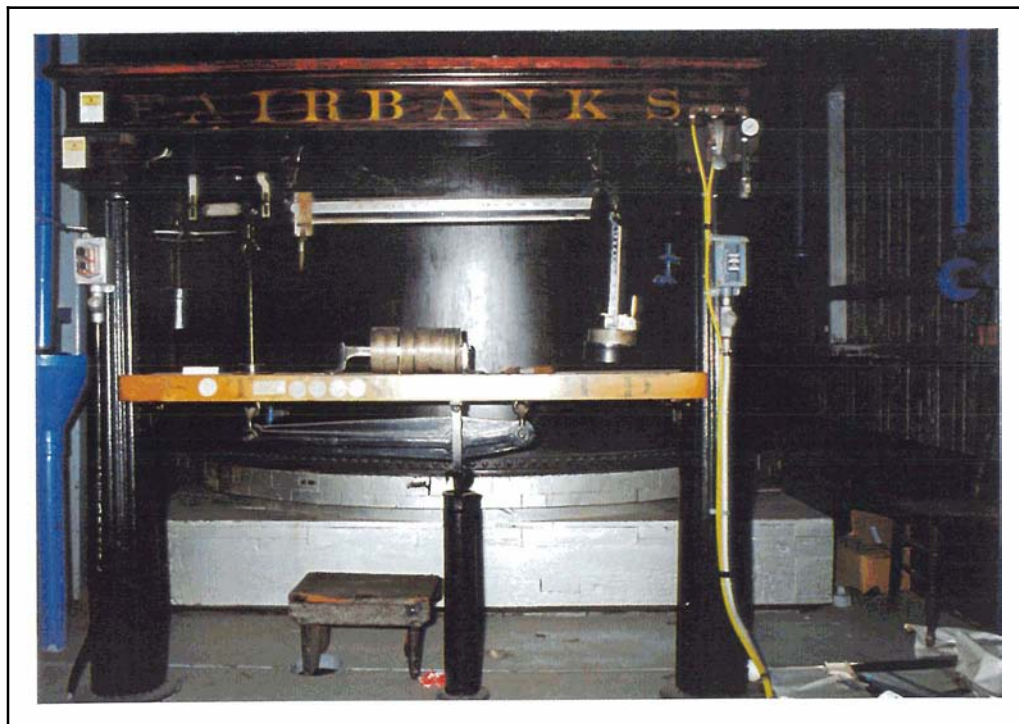
61-2-2/3 Tanks

ITEM NO.
61-2-1

LOCATION	Building #61 Mixing	Floor: 2	Compass: NE
ITEM NAME	Water Still C1900-10	Quantity: 1	
MARKINGS	Stencilled	"CONDENSER NO 2"	
MATERIALS	Primary: Copper boiler Copper condenser Secondary: Iron pipe		
DIMENSIONS	Height: 6"	Width: 4' D	Depth:
CONDITION	Out of service		
USAGE	A. Distillery: Believed used to provide distilled water for blending operations. B. General:		
SIGNIFICANCE	Central to distillery operations.		

ITEM NO.
61-2-2/3

LOCATION	Building #61 Mixing	Floor: 2	Compass: SE
ITEM NAME	Tanks C1900-10	Quantity: 2	
MARKINGS	Stencilled	"NO 2" "FLAVORING TANK" "471 GALS"	"NO 3" "FLAVORING TANK" "471 GALS"
MATERIALS	Primary: Formed and rivetted copper Secondary: Glass sight tube		
DIMENSIONS	Height: 69"	Width: 52" D	Depth:
CONDITION	Out of service		
USAGE	A. Distillery: Unknown, but conjectured to hold flavoring whiskeys for blending. B. General:		
SIGNIFICANCE	Central to distillery operations.		



61-2-41516 Tank Scales and Tanks

ITEM NO.
61-2-4/5/6

LOCATION	Building #61 Mixing	<i>floor:</i> 2	<i>Compass:</i> SE
ITEM NAME	Tank Scales and Tanks C1898	<i>Quantity:</i> 3	
MARKINGS	Stencilled Beam	"FAIRBANKS" "STANDARD" "PATENT JAN 18, 1898"	
MATERIALS	<i>Primary:</i>	Cast iron columns Cast iron linkages and pivot towers Formed and rivetted tanks	
	<i>Secondary:</i>	Steel and nickel plated steel beams Painted, stencilled scale table and head	
DIMENSIONS	<i>Height:</i> 6"	<i>Width:</i> 6"	<i>Depth:</i> 12"
CONDITION	Serviceable, paint decoration excellent.		
USAGE	A. <i>Distillery:</i> To weigh alcohol for blending. B. <i>General:</i>		
SIGNIFICANCE	Central to distillery operations. Finest condition period distillery equipment in complex.		

NO PHOTO

62-1-1 Dip Stick



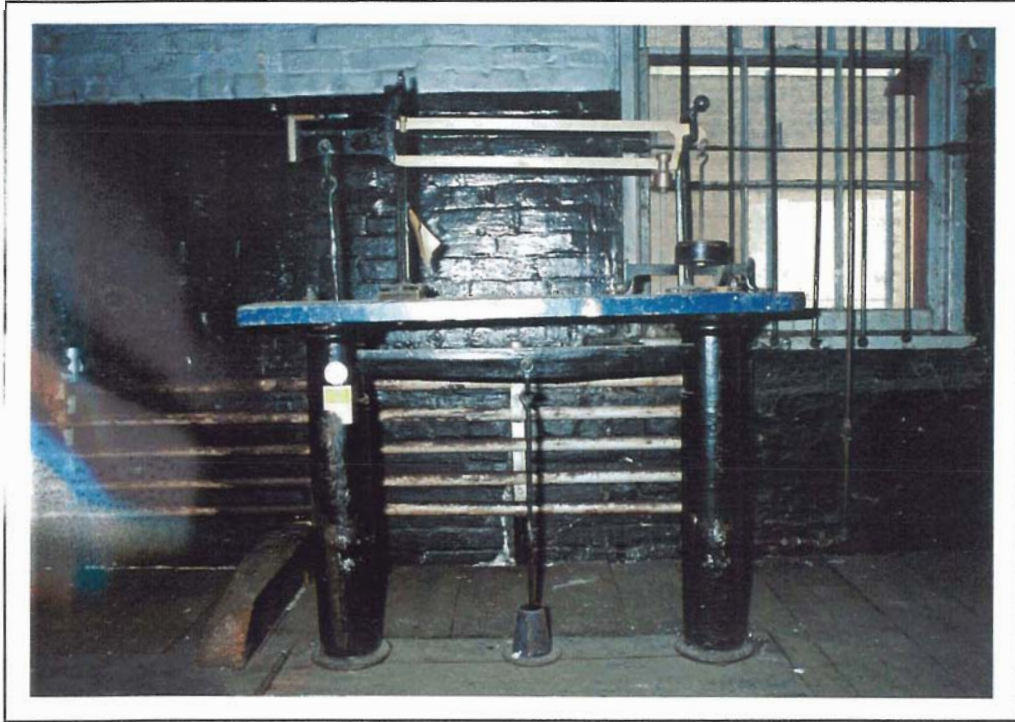
62-1-2 Wardrobe

ITEM NO.
62-1-1

LOCATION	Building #62 Mixing	Floor: 1	Compass: S
ITEM NAME	Dip Stick	Quantity: 1	
MARKINGS	Stamped numerical scales on three sides		
MATERIALS	Primary: Wood Secondary:		
DIMENSIONS	Height: 10'8"L Width: 1 1/4" Depth: 5/8"		
CONDITION	Serviceable		
USAGE	A. Distillery: To measure liquid levels in tanks. B. General:		
SIGNIFICANCE	Calculations derived from measurement provides volume measure.		

ITEM NO.
62-1-2

LOCATION	Building #62 Mixing	Floor: 1	Compass: NW
ITEM NAME	Wardrobe C1880	Quantity: 1	
MARKINGS	None Observed		
MATERIALS	Primary: Painted wood Secondary: Steel butt hinges		
DIMENSIONS	Height: 6'6" Width: 6' Depth: 20"		
CONDITION	Serviceable		
USAGE	A. Distillery: Clothes storage B. General:		
SIGNIFICANCE	Good period furniture construction.		



62A-1-1 Floor Scale



62A-1-2 Duplex Pump

ITEM NO.
62A-1-1

LOCATION	Building #62A Long Room	Floor: 1	Compass: SE
ITEM NAME	Floor Scale C1920-30	Quantity: 1	
MARKINGS	None Observed		
MATERIALS	Primary: Cast steel columns Cast steel linkages and pivot towers Secondary:- Brass balance beam Steel platen		
DIMENSIONS	Height: 4'	Width: 4'6"	Depth: 14"
CONDITION	Serviceable		
USAGE	A. Distillery: Used to weigh filled barrels for excise purposes. B. General:		
SIGNIFICANCE	Central to distillery operations. Long Room was transfer area for barrels going to rack warehouses.		

ITEM NO.
62A-1-2

LOCATION	Building #62A Long Room	Floor: 1	Compass: SW
ITEM NAME	Duplex Pump C1920-30	Quantity: 1	
MARKINGS	(On plate)	"WORTHINGTON" "SIZE 6X4X6" "STEAM PUMP" "SER. 38400"	
MATERIALS	Primary.. Cast and machined iron and steel castings Secondary:		
DIMENSIONS	Height: 2'	Width: 3'	Depth: 18"
CONDITION	Out of service		
USAGE	A. Distillery: Liquid pumping B. General:		
SIGNIFICANCE	Yellow paint indicates not used for alcohol. Yellow paint usually indicates mash transfer.		



62A-1-3/4 Barrel Ramps

ITEM NO.

62A-1-3

62A-1-4

LOCATION Building #62A Long Room **Floor:** 1 **Compass:** SW

ITEM NAME Barrel Ramps **Quantity:** 2

MARKINGS None Observed

MATERIALS **Primary:** Wood Rails

Secondary: Cast and forged iron fittings

DIMENSIONS **Height:** 4" **Width:** 20" **Depth:** 4 1/2'L & 10 1/2'L

CONDITION Serviceable

USAGE A. **Distillery:** Used to roll barrels into racking

B. General:

SIGNIFICANCE Part of process - maturing.