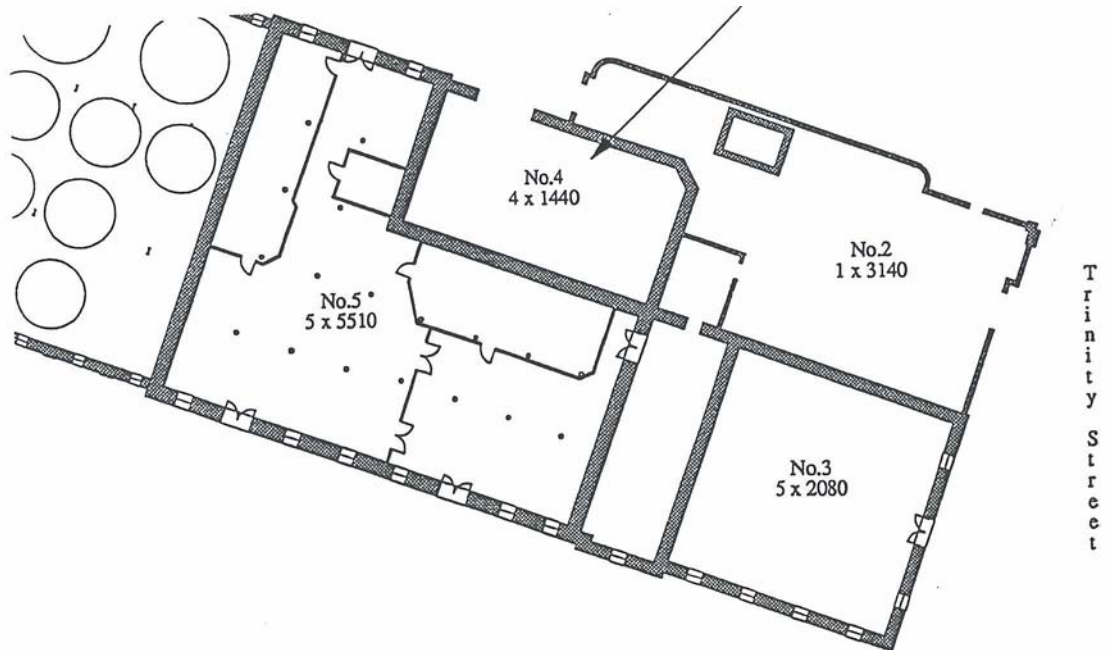


GROUP D: Stone Distillery Building Floor Plan



EQUIPMENT SUMMARY

BUILDING #2

Floor 1

- 2-1-1 Hand Pump
- 2-1-2 Sheet Metal Roller
- 2-1-3 Hand Cart
- 2-1-4 Hand Cart
- 2-1-5 Sheet Metal Break
- 2-1-6 Machinist Vise
- 2-1-7 Boiler/Stoker
- 2-1-8 Flue Shovels
- 2-1-9 Flue Shovels
- 2-1-10 Flue Shovels
- 2-1-11 Platform Scale
- 2-1-12 Gauge

BUILDING #2A

Floor 1

- 2A-1-1 Air Compressor
- 2A-1-2 Air Compressor

BUILDING #3

Floor 1

- 3-1-1 Railway Car Puller
- 3-1-2 Plough Windlass
- 3-1-3 Line Shafting
- 3-1-4 Railway Car Scale
- 3-1-5 Grain Ploughs

Floor 2

- 3-2-6 Roller Mill
- 3-2-7 Roller Mill
- 3-2-8 Grain Chutes

Floor 3

No Equipment Observed

Floor 4

No Equipment Observed

Floor 5

- 3-5-9 Cyclone Blower

BUILDING #4

Floor 1

- 4-1-1 Gauge

Floor 2

No Equipment Observed

Floor 3

- 4-3-2 Mash Drying Rack
- 4-3-3 Hopper

Floor 4

- 4-4-4 Mash Hopper
- 4-4-5 Service Crane

BUILDING #5A

Floor 1

- 5A-1-1 Duplex Pump
- 5A-1-2 Motor & Gear Case
- 5A-1-3 Mash Cooker
- 5A-1-4 Mash Cooker

Floor 2

- 5A-2-5 Auger Feeder
- 5A-2-6 Mash Cooker

Floor 3

- 5A-3-7 Wheat Scale

Floor 4

- 5A-4-8 Condenser
- 5A-4-9 Condenser

Floor 5

Equipment Pass Through

BUILDING #5

Floor 1

- 5-1-1 Duplex Pump
- 5-1-2 Scale & Scale Tank
- 5-1-3 Scale & Scale Tank
- 5-1-4 Scale & Scale Tank
- 5-1-5 Tank Scale
- 5-1-6 Floor Scale
- 5-1-7 Distillation Columns
- 5-1-8 Distillation Columns

Floor 2

- 5-2-9 Anhydrous Unit
- 5-2-10 Control Panel
- 5-2-11 Tail Boxes
- 5-2-12 Control Panel
- 5-2-13/14 Tail Boxes
- 5-2-15/15A Distillation Unit
- 5-2-16 Control Panel
- 5-2-17 Distillation Unit
- 5-2-18 Slop Tester
- 5-2-19 Tail Boxes
- 5-2-20 Distillation Columns

Floor 3

- 5-3-21 Distillation Columns
- 5-3-22 Distillation Columns

Floor 4

- 5-4-23 Distillation Units
- 5-4-24 Distillation Columns
- 5-4-25 Column Sections
- 5-4-26 Condensers

Floor 5

- 5-5-27 Condenser Tops
- 5-5-28 Condensers
- 5-5-29 Hand Winch



2-1-1 Hand Pump



2-1-2 9' Sheet Metal Roller

ITEM NO.
2-1-1

LOCATION	Building #2 Stone Distillery	Floor: 1	Compass: NE
ITEM NAME	Hand Pump C1900-1920	Quantity: 1	
MARKINGS	None Observed		
MATERIALS	Primary.. Cast iron and machined steel Secondary: Iron pipe		
DIMENSIONS	Height: 12"	Width: 24"	Depth: 3"
CONDITION	Out of service		
USAGE	A. Distillery: Unknown B. General:		
SIGNIFICANCE			

ITEM NO.
2-1-2

LOCATION	Building #2 Stone Distillery	Floor: 1	Compass: NE
ITEM NAME	9' Sheet Metal Roller C1900	Quantity: 1	
MARKINGS	None Observed		
MATERIALS	Primary: Cast iron frame and gearing Machined steel rollers Secondary..		
DIMENSIONS	Height: 3'8"	Width: 28"	Depth: 10'8"L
CONDITION	Serviceable		
USAGE	A. Distillery: Believed to be from copper smithing shop. Used to roll sheet goods into arcs and tubes for tank construction. B. General:		
SIGNIFICANCE	Indicates self-sufficiency of distillery operations to produce special purpose equipment.		



2-1-3 Hand Cart



2-1-4 Hand Cart

ITEM NO.
2-1-3

LOCATION	Building #2 Stone Distillery	Floor: 1	Compass: NE
ITEM NAME	Hand Cart C1890	Quantity: 1	
MARKINGS	None Observed		
MATERIALS	Primary: Woodframe Secondary: Cart spoke wheels Forged iron fittings		
DIMENSIONS	Height: 4'6"	Width: 20"	Depth: 8"
CONDITION	Serviceable		
USAGE	A. Distillery: Hand transportation of barrel goods. B. General:		
SIGNIFICANCE	Indicates early materials handling technology.		

ITEM NO.
2-1-4

LOCATION	Building #2 Stone Distillery	Floor: 1	Compass: NE
ITEM NAME	Hand Cart C1930-40	Quantity: 1	
MARKINGS	Stencilled on frame "CANADIAN FAIRBANKS - MORSE" "COMPANY LIMITED"		
MATERIALS	Primary: Woodframe Secondary: Cast wheels and bearing blocks Forged steel fittings		
DIMENSIONS	Height: 4'6"	Width: 2'	Depth: 12"
CONDITION	Serviceable		
USAGE	A. Distillery: Hand transportation of barrel goods. B. General:		
SIGNIFICANCE	Indicates early materials handling technology.		



2-1-5 Sheet Metal Break



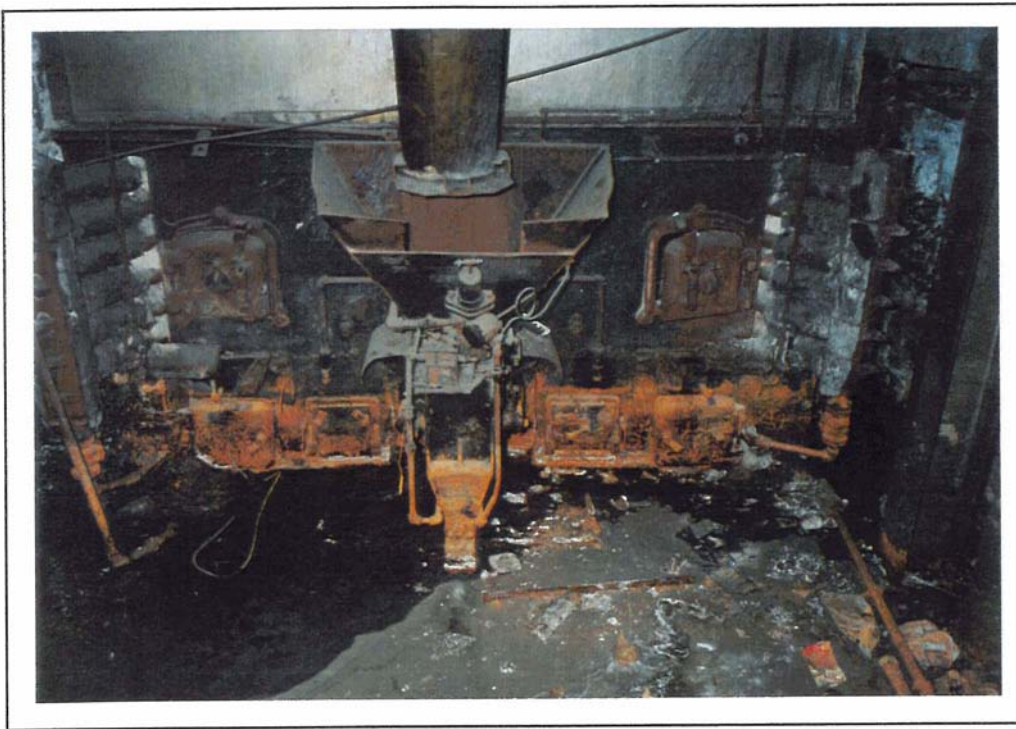
2-1-6 Machinist Vise

ITEM NO.
2-1-5

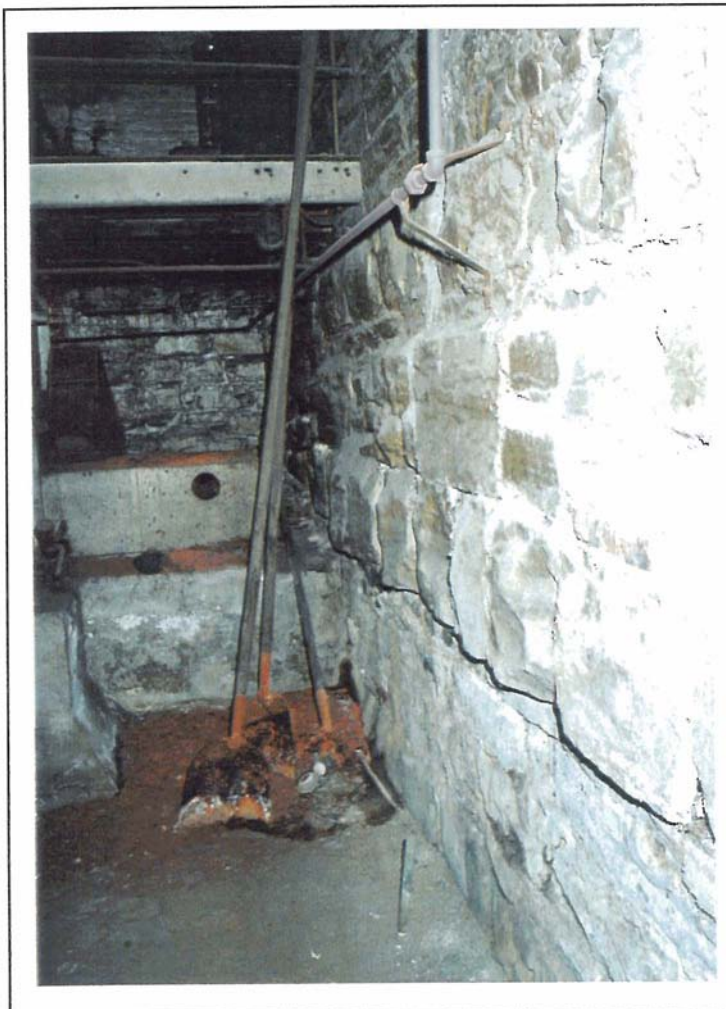
LOCATION	Building #2 Stone Distillery	Floor: 1	Compass: S
ITEM NAME	Sheet Metal Break	Quantity: 1	
MARKINGS	In casting	"THE J U ROBINSON" "M.F.G. CO." "CINCINATTI O. USA"	
MATERIALS	Primary: Cast iron frame and gearing Secondary..		
DIMENSIONS	Height: 5'	Width: 11'	Depth: 5'
CONDITION	Serviceable		
USAGE	<p>A. Distillery:</p> <p>B. General: Believed to be formerly located at coppersmithing shop. Used to bend (break) sheet goods into angles.</p>		
SIGNIFICANCE	Indicates plant manufacture of specialized equipment.		

ITEM NO.
2-1-6

LOCATION	Building #2 Stone Distillery	Floor: 1	Compass: SE
ITEM NAME	Machinist Vise C1914	Quantity: 1	
MARKINGS	In castings	"NO 106" "REED MFG CO" "ERIE PA USA" "PAT DEC 24 1912" "AUG 11 1914"	
MATERIALS	Primary: Cast and machined steel Secondary:		
DIMENSIONS	Height: 10"	Width: 18"	Depth: 6"
CONDITION	Serviceable		
USAGE	<p>A. Distillery:</p> <p>B. General.. Securing metal for cutting, etc.</p>		
SIGNIFICANCE	Indicates maintenance function.		



2-1-7 Boiler & Automatic Stoker



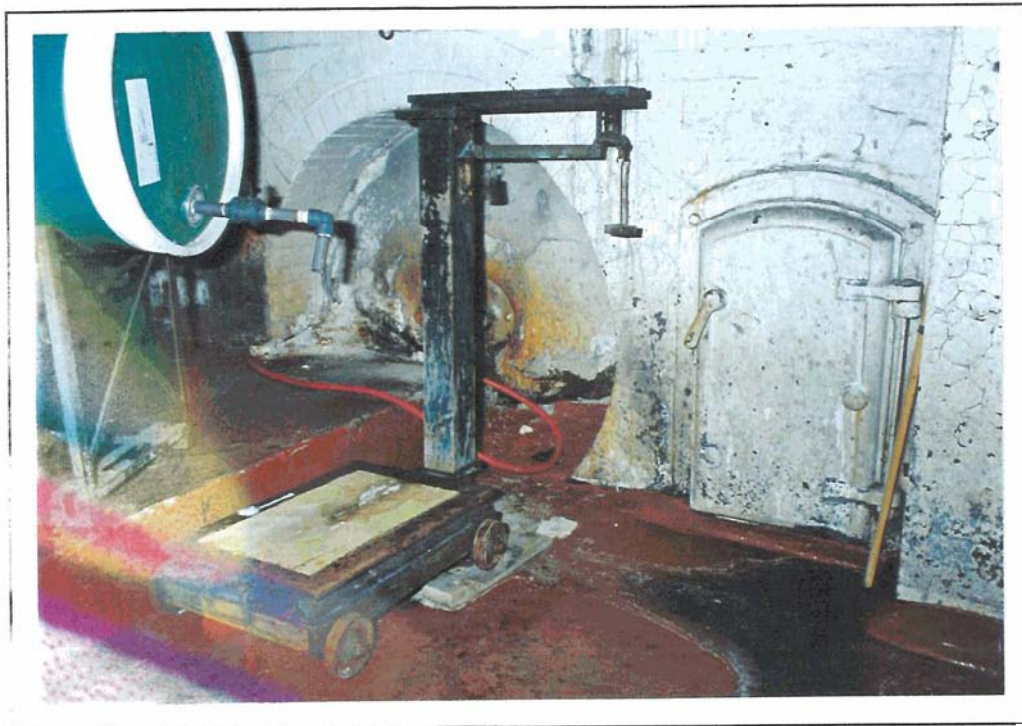
2-1-8/9/10 Flue Shovels

ITEM NO.
2-1-7

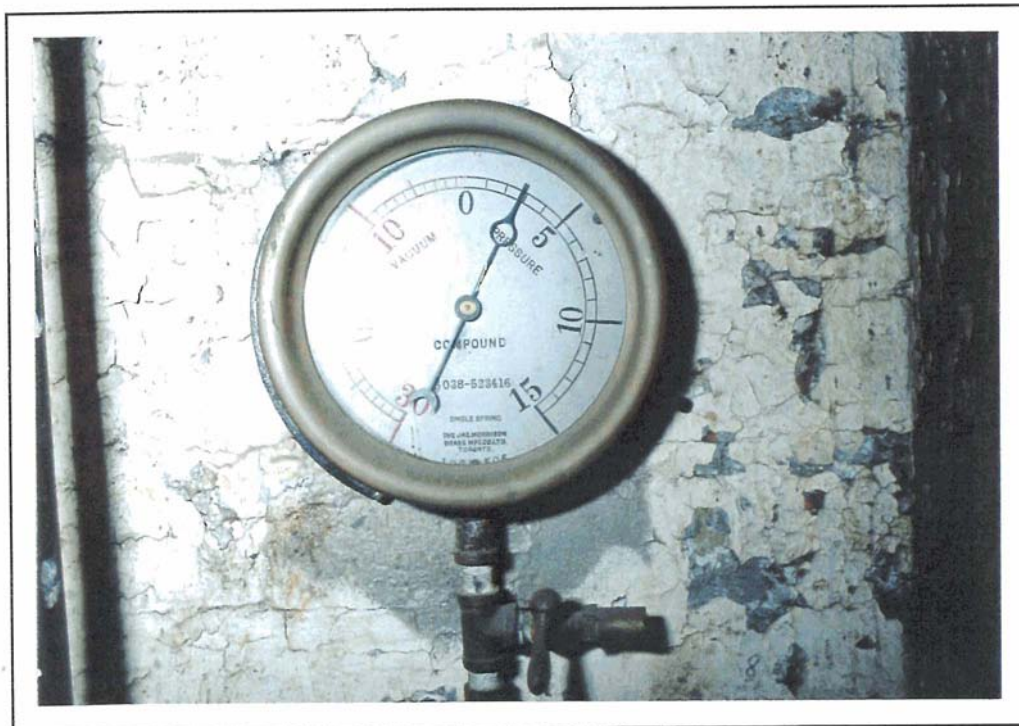
LOCATION	Building #2 Stone Distillery	Floor: 1	Compass: SW
ITEM NAME	Boiler and Automatic Stoker Quantity: 1 C1900		
MARKINGS	(On plate) In casting	"TAYLOR" "COMBUSTION ENGINEERING" "CORPORATION LIMITED MONTREAL" "TYPE E STOKER"	
MATERIALS	Primary: Cast iron and machined steel Secondary:		
DIMENSIONS	Height: Var.	Width:	Depth:
CONDITION	Out of service		
USAGE	A. Distillery: To provide steam for motive power, heat and process. B. General:		
SIGNIFICANCE	Steam use was integral to the distillery process; power for engines, pumps, and steam to operate the distillation columns.		

ITEM NO.
2-1-819110

LOCATION	Building #2 Stone Distillery	Floor: 1	Compass: SE
ITEM NAME	Flue Shovels Quantity: 3		
MARKINGS	None Observed		
MATERIALS	Primary: Formed steel blades Wood handles Secondary:		
DIMENSIONS	Height: 16'L	Width: 12"	Depth:
CONDITION	Decrepit		
USAGE	A. Distillery: To clear ash from boilers. B. General:		
SIGNIFICANCE	Maintenance of boiler function.		



2-1-11 Platform Scale



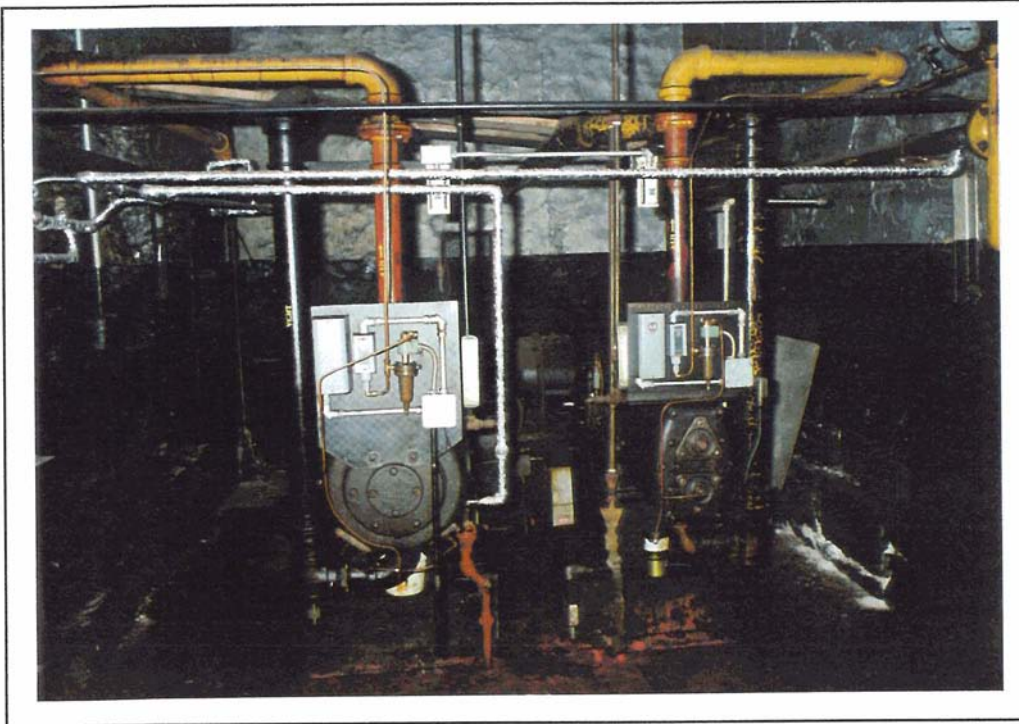
2-1-12 Pressure/Vacuum Gauge

ITEM NO.
2-1-11

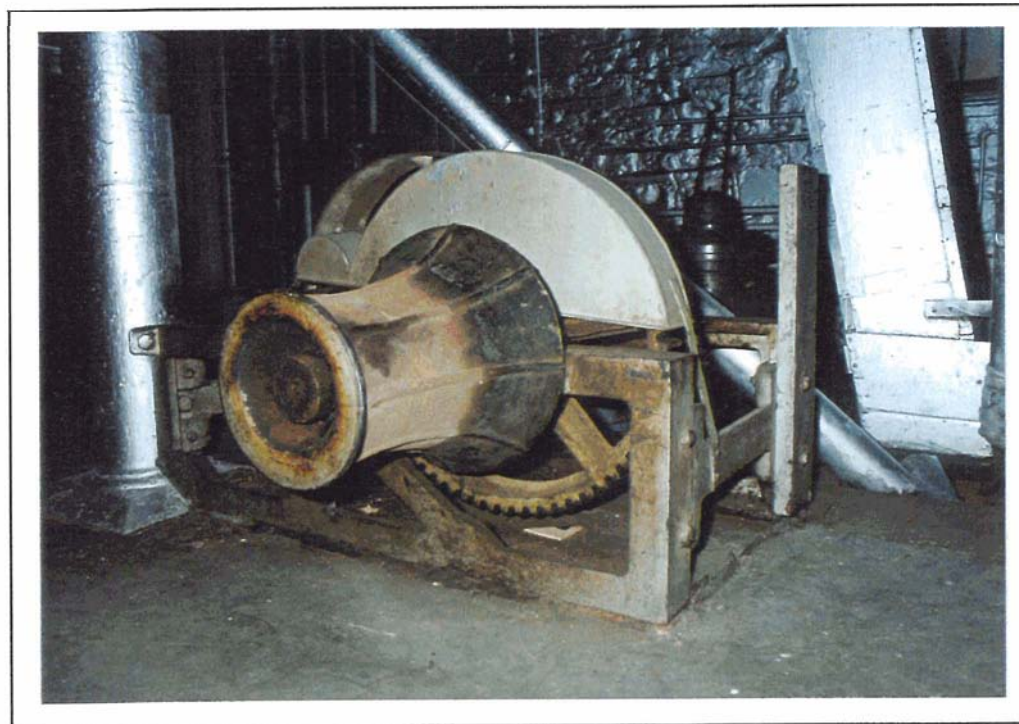
LOCATION	Building #2 Stone Distillery	Floor: 1	Compass: S
ITEM NAME	Platform Scale	Quantity: 1	
MARKINGS	Cast on platform "FAIRBANKS PATENT" "NO. 101" Cast on beam "FAIRBANKS"		
MATERIALS	Primary: Wood frame and post Secondary: Cast wheels Brass beam		
DIMENSIONS	Height: 3'6"	Width: 2'	Depth: 2'6"
CONDITION	Out of service		
USAGE	A. Distillery: B. General: Location in boiler house probably indicated use to weigh chemicals for water conditioning.		
SIGNIFICANCE	Maintenance function at distillery.		

ITEM NO.
2-1-12

LOCATION	Building #2 Stone Distillery	Floor: 1	Compass: W
ITEM NAME	Pressure/Vacuum Gauge	Quantity: 1	
MARKINGS	Engraved numerical scale "0-30", "0-15" "THE JAS. MORRISON" "SINGLE SPRING" "BRASS MFG. CO. LTD." "SER #189506" "TORONTO"		
MATERIALS	Primary: Brass bezel Glass face Secondary: Iron Brass valve		
DIMENSIONS	Height:	Width: 7" D	Depth: 2"
CONDITION	Serviceable		
USAGE	A. Distillery B. General: Monitoring of boiler related function.		
SIGNIFICANCE	Maintenance function of boiler operations.		



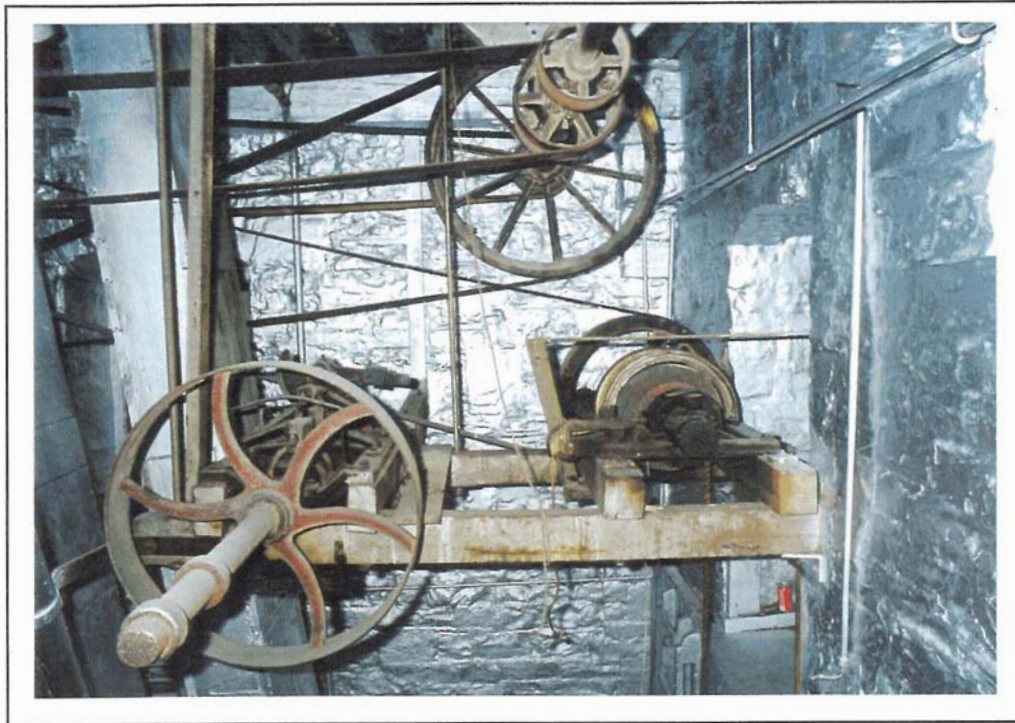
2A-1-1/2 Air Compressor



3-1-1 Rail Car Puller

		ITEM NO. 2A-1-1/2	
LOCATION	Building #2A Stone Distillery Floor: 1 Compass: S		
ITEM NAME	Air Compressor C1940 Quantity: 1		
MARKINGS	(On plate) "INGERSOLL - RAND CO. LIMITED" "SHERBROOKE QUE." "SIZE 7X7" "ES1" "100lbs"		
MATERIALS	Primary: Cast and machined steel Secondary:		
DIMENSIONS	Height: 5' Width: 7'L Depth: 24"		
CONDITION	In service		
USAGE	A. Distillery: Pump operation B. General:		
SIGNIFICANCE			

		ITEM NO. 3-1-1	
LOCATION	Building #3 Stone Distillery Floor: 1 Compass: SE		
ITEM NAME	Rail Car Puller C1890 Quantity: 1		
MARKINGS	Non Observed CF. Ref. "NORDYKE EQUIPMENT CATALOGUE"		
MATERIALS	Primary: Cast iron capstan and gear train Secondary: Steel safety covers		
DIMENSIONS	Height: 3' Width: 5'L Depth: 4'		
CONDITION	Serviceable		
USAGE	A. Distillery.. Used in the granary to move rail cars on the exterior rail siding to facilitate the unloading of grain. B. General:		
SIGNIFICANCE	Essential to the granary function of distillery operations. A unique survival of early technology.		



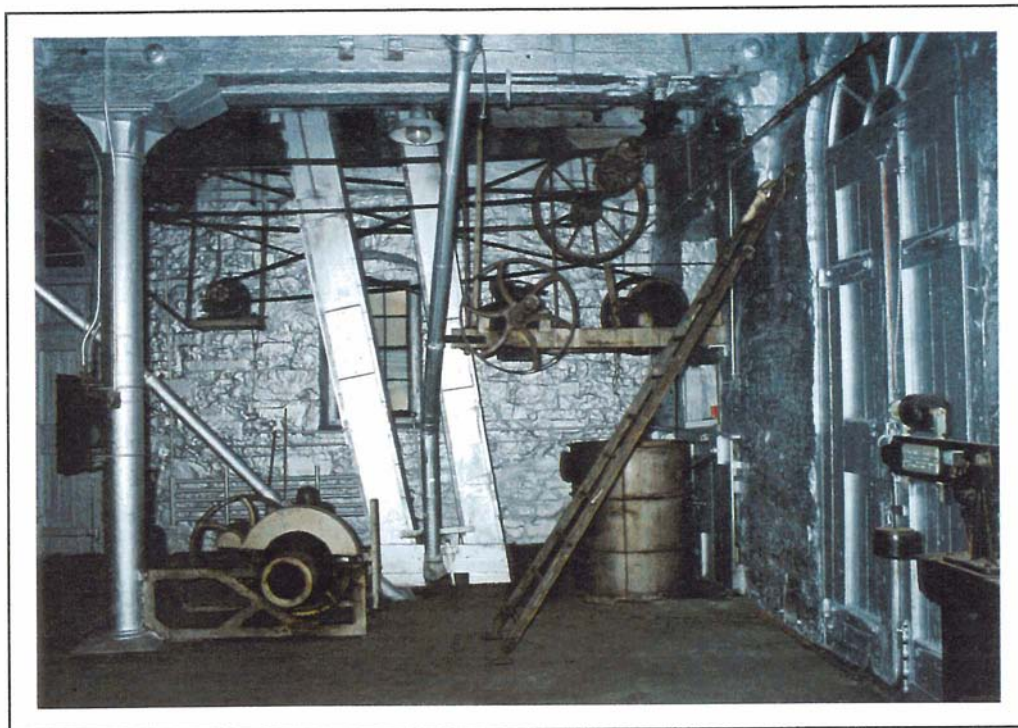
3-1-2 Grain Plow Winch and Turning Block



3-1-2 Grain Plow Winch and Turning Block (Detail)

ITEM NO.
3-1-2

LOCATION	Building #3 Stone Distillery	Floor: 1	Compass: SE
ITEM NAME	Grain Plough Winch and Turning Block C1890 Quantity: 1		
MARKINGS	None Observed Cf. Ref. "NORDYKE CATALOGUE"		
MATERIALS	Primary: Cast iron pulleys Cast and machined rod and steel windlass Secondary		
DIMENSIONS	Height: 5'	Width: 7'L	Depth: 6'
CONDITION	Serviceable		
USAGE	A. Distillery: Used in the granary to provide pulling power for grain plows used in unloading grain from rail cars parked on exterior rail siding. B. General:		
SIGNIFICANCE	Essential to the granary function of distillery operations. A unique survival of an early technology.		



3-1-3 Pulleys and Line Shafting



3-1-4 Rail Car Scale

ITEM NO.
3-1-3

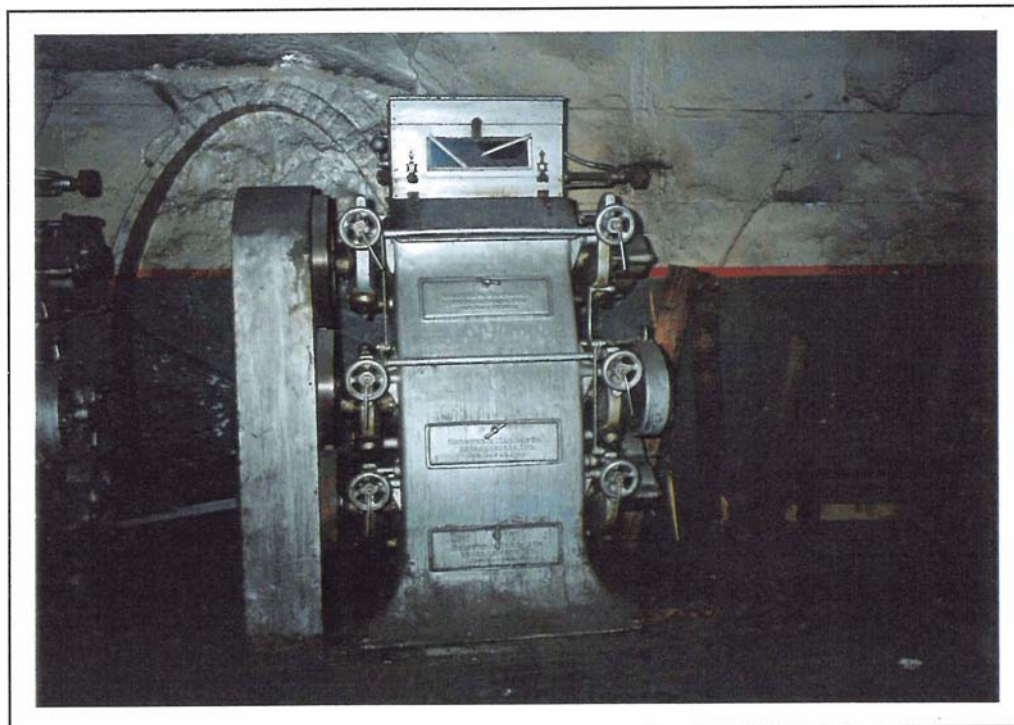
LOCATION	Building #3 Stone Distillery	Floor: 1	Compass: SE
ITEM NAME	Pulleys and Line Shafting Quantity: Unit C1890		
MARKINGS	None Observed		
MATERIALS	Primary: Cast iron pulleys and pillow blocks and hangers Secondary: Leather belting		
DIMENSIONS	Height: 5'	Width: 7'	Depth: 15'
CONDITION	Serviceable		
USAGE	A. Distillery: Line shafting and pulleys used to power car puller and grain plow puller, taking power from electrical motor. B. General:		
SIGNIFICANCE	Essential to granary function of distillery operation. Survival of early power transmission technology.		

ITEM NO.
3-1-4

LOCATION	Building #3 Stone Distillery	Floor: 1	Compass: S
ITEM NAME	Rail Car Scale C1930-40 Quantity: 1		
MARKINGS	(On plate) "FAIRBANKS SCALES" "TYPE T TRACK SCALES" "SHOP N . F100689 SEC. CAPY. 75 TONS" "BEAM MULT. AT BUTT 600"		
MATERIALS	Primary: Cast iron columns Painted steel Secondary.. Nickel plated steel beam Cast iron weights		
DIMENSIONS	Height: 5'	Width: 7'	Depth: 24"
CONDITION	Serviceable, but incomplete as track scale platform has been removed.		
USAGE	A. Distillery: Used to weight rail cars to establish delivery weight. B. General:		
SIGNIFICANCE	Central to granary operations.		



3-1-5 Hand Grain Ploughs



3-2-6/7 Three High Roller Mill

ITEM NO.
3-1-5

LOCATION	Building #3 Stone Distillery Floor: 1 Compass: NW
ITEM NAME	Hand Grain Ploughs C1890 Quantity: 9
MARKINGS	None Observed Cf. Ref. "NORDYKE CATALOGUE"
MATERIALS	Primary: Wood frame and body and handles Secondary: Forged metal skids
DIMENSIONS	Height: 8" Width: 36"L Depth: 24"
CONDITION	Serviceable, but incomplete as metal yokes are missing to permit pulling.
USAGE	A. Distillery: Used in granary operations in conjunction with "plow puller" to unload grain from rail cars. B. General:
SIGNIFICANCE	Central to granary function of distillery.

ITEM NO.
3-2-6/7

LOCATION	Building #3 Stone Distillery Hoor: 2 Compass: SW
ITEM NAME	Three High Roller Mill Quantity: 2 C1883
MARKINGS	Cast in Doors "NORDYKE & MARMON" "INDIANAPOLIS, IND" "PAT. MAY 15, 1883" Cf. Ref. "NORDYKE CATALOGUE"
MATERIALS	Primary: Cast iron body Secondary: Cast steel pulleys
DIMENSIONS	Height: 6'5" Width: 5'1" Depth: 48"
CONDITION	Out of service, but good condition.
USAGE	A. Distillery: Used in granary to grind grain to meal previous to mashing. B. General:
SIGNIFICANCE	Central to granary function of distillery operations. Unique survival of technology post-dating stone grinding and pre-dating hammer mills.



3-2-8 Grain Feed Chutes



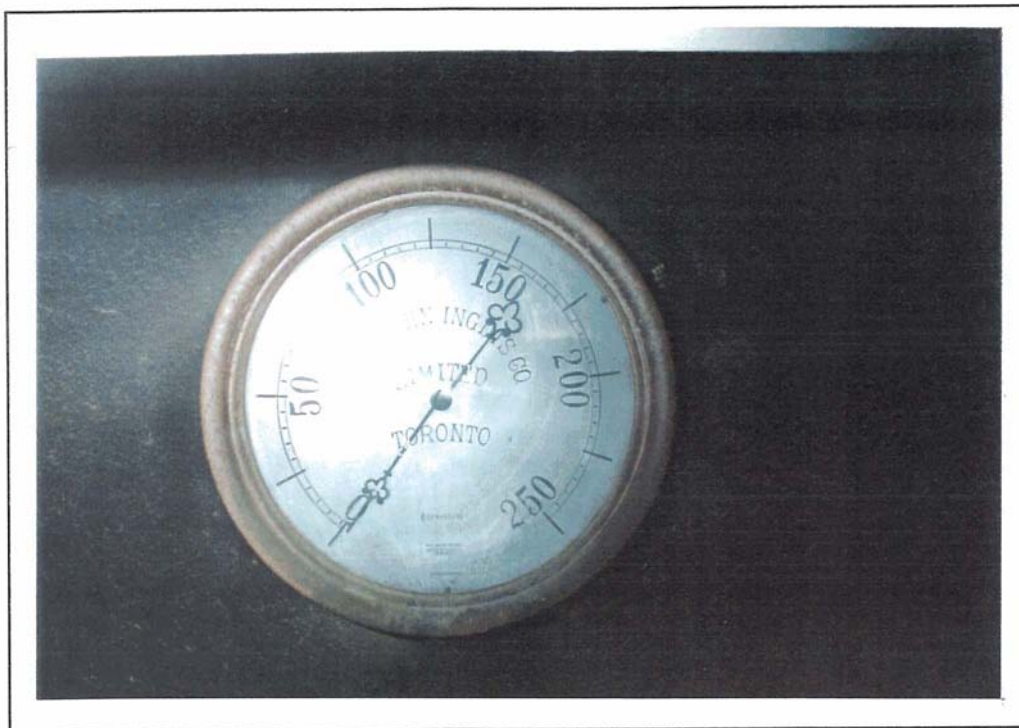
3-5-9 Cyclone Blower

ITEM NO.
3-2-8

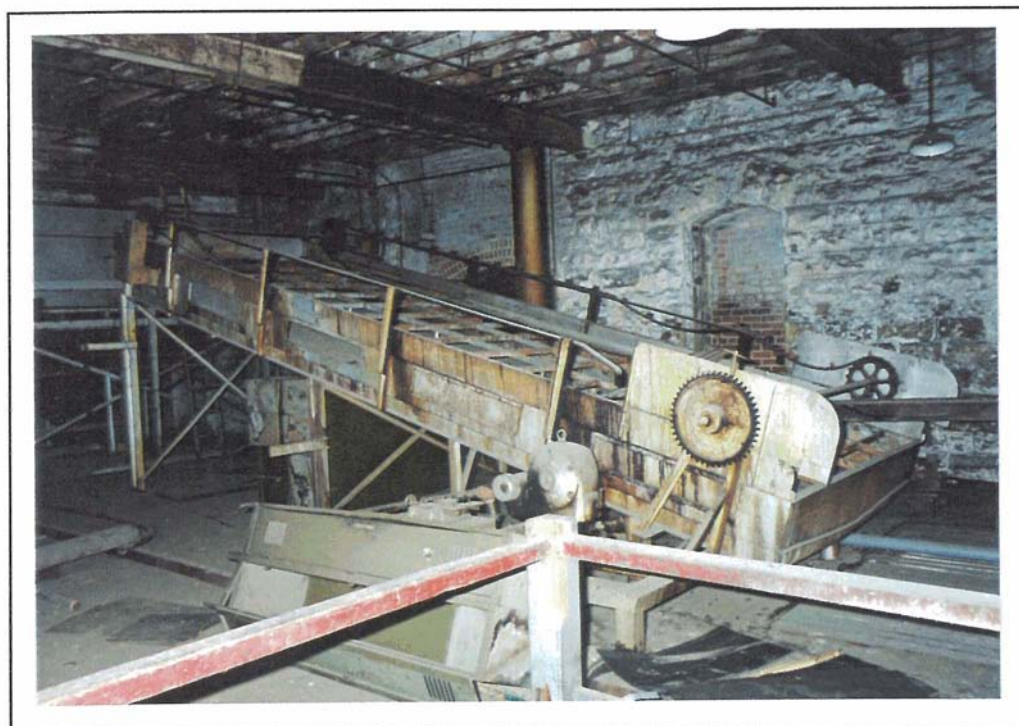
LOCATION	Building #3 Stone Distillery	Floor: 2	Compass:
ITEM NAME	Grain Feed Chutes	Quantity: Several	
MARKINGS	None Observed		
MATERIALS	Primary:- Formed and soldered sheet metal Secondary:		
DIMENSIONS	Height: Var.	Width:	Depth:
CONDITION	Serviceable		
USAGE	A. Distillery= To supply unmilled grain from storage bins to roller mills. B. General:		
SIGNIFICANCE	Central to granary function of distillery operations.		

ITEM NO.
3-5-9

LOCATION	Building #3 Stone Distillery	Floor: 5	Compass: NW
ITEM NAME	Cyclone Blower C1880	Quantity: 1	
MARKINGS	(Cast Plate) "FOR 36 SQ. FT. GRATE SURFACE" "B.F. STURTEVANT" "NO. 6" "SPEED 1000 REVOLUTIONS" "PRICE 180 DOLLARS"		
MATERIALS	Primary: Cast steel blower housing Secondary: Formed sheet metal ducting		
DIMENSIONS	Height: 6"	Width: 2'6"D	Depth: 20"
CONDITION	Out of service		
USAGE	A. Distillery: Used as feed blower for grain distribution. B. General:		
SIGNIFICANCE	Central to granary function of distillery operations.		



4-1-1 Pressure Gauge



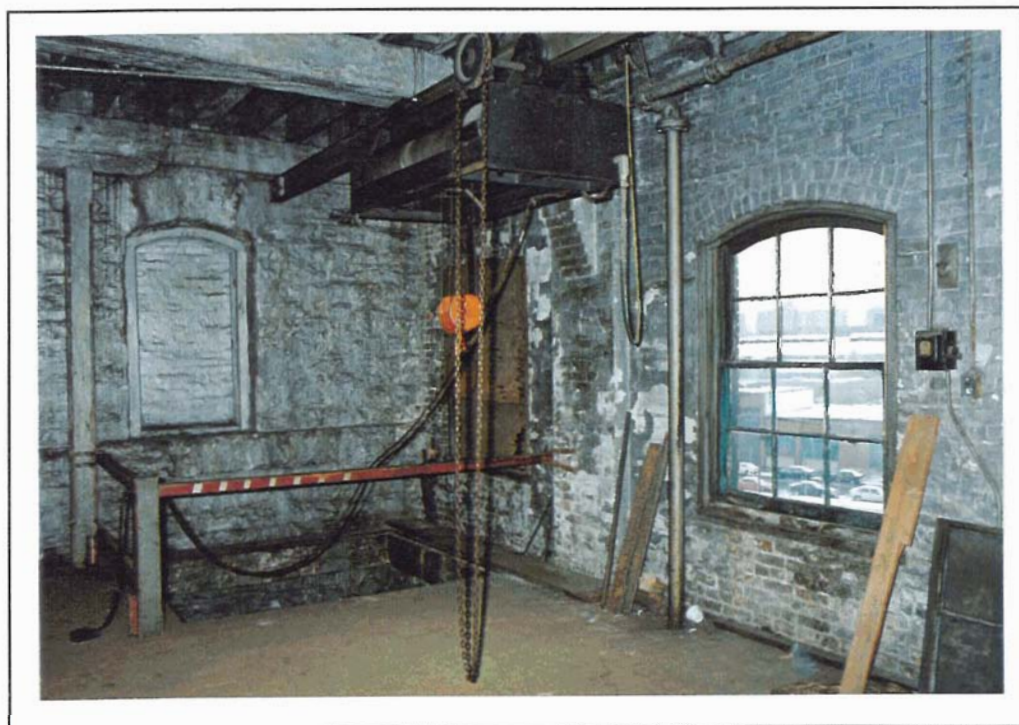
4-3-2/3 Mash Drying Rack and Hopper

		ITEM NO. 4-1-1	
LOCATION	Building #4 Stone Distillery	Floor: 1	Compass: S
ITEM NAME	Pressure Gauge C1880-90	Quantity: 1	
MARKINGS	Engraved	"JOHN INGLIS CO." "LIMITED" "TORONTO*" "DOUBLE SPRING" "JAS. MORRISON TORONTO BRASS MFG." "024-35241"	
MATERIALS	Primary: Brass bezel Glass face cover Secondary: Engraved German silver face		
DIMENSIONS	Height:	Width: 14"D	Depth: 2"
CONDITION	Serviceable		
USAGE	A. Distillery: B. General: To monitor steam pressure.		
SIGNIFICANCE	Good example of early instrumentation.		

		ITEM NO. 4-3-2/3	
LOCATION	Building #4 Stone Distillery	Floor: 3	Compass: S
ITEM NAME	Mash Drying Rack & Hopper	Quantity: 1	
MARKINGS	C 1920?		
MARKINGS	None Observed		
MATERIALS	Primary: Steel framework - rack Sheet metal - hopper Secondary: Cast iron gearing		
DIMENSIONS	Height: 10'	Width: 20'L	Depth: 8'
CONDITION	Out of service		
USAGE	A. Distillery: It is believed that this mechanism functioned as a drying rack for spent mash. Hopper used for storage of wet mash. B. General:		
SIGNIFICANCE	Central to distillery operations. Part of "Dry House" operations.		



4-4-4 Grain Hopper/Blower with Ducts



4-4-5 Travel Crane

		ITEM NO. 4-4-4
LOCATION	Building #4 Stone Distillery	Floor: 4 Compass: SE
ITEM NAME	Grain Hopper/Blower with Ducts C1920?	Quantity: 1
MARKINGS	None Observed	
MATERIALS	Primary: Formed and rivetted sheet steel - blower/hopper Formed sheet steel - ducts Secondary:	
DIMENSIONS	Height: 11' Width: 4' Depth: 5'	
CONDITION	Out of service	
USAGE	A. Distillery: Believed to be used to transport dried mash for storage or removal. 3. General:	
SIGNIFICANCE	Central to distillery operations. Part of operation of "Dry House".	

		ITEM NO. 4-4-5
LOCATION	Building #4 Stone Distillery	Floor: 4 Compass: SE
ITEM NAME	Travel Crane	Quantity: 1
MARKINGS	(On plate)	"PROVINCIAL ENGINEERING LIMITED" "NIAGARA FALLS" "CAP 2 TONS"
MATERIALS	Primary: Steelframe Steel rails Secondary: Chain and wire rope	
DIMENSIONS	Height: 18" Width: 6' Depth: 3'	
CONDITION	Serviceable	
USAGE	A. Distillery: B. General: To hoist material through 4 floors as part of maintenance or construction.	
SIGNIFICANCE		



5A-1-1 Duplex Pump



5A-1-2 Motor and Transfer Case

ITEM NO.
5A-1-1

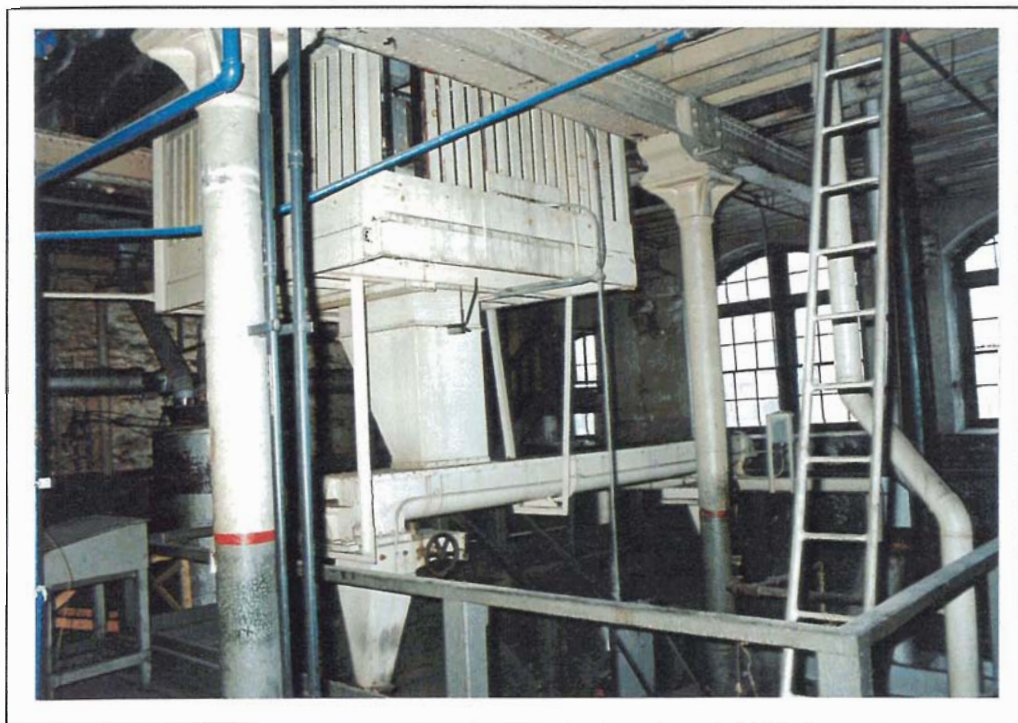
LOCATION	Building #5A Stone Distillery Floor: 1 Compass: E
ITEM NAME	Duplex Pump Quantity: 1
MARKINGS	Cast "DEAN BROS" "INDIANAPOLIS IND. USA"
MATERIALS	Primary: Iron castings and machined steel Secondary:
DIMENSIONS	Height: 5' Width: 6'8" Depth: 3'
CONDITION	Out of service
USAGE	A. Distillery: This large pump was presumed to pump water to feed the mash cookers. B. General:
SIGNIFICANCE	Central to distillery operations.

ITEM NO.
5A-1'-2

LOCATION	Building #5A Stone Distillery Floor: 1 Compass: E
ITEM NAME	Motor and Transfer Case Quantity: 1 C 19507
MARKINGS	None Observed
MATERIALS	Primary: Steel and iron castings Secondary..
DIMENSIONS	Height: 2' Width: 5' Depth: 3'
CONDITION	Not determined
USAGE	A. Distillery: Motor used to power, by means of chain drive, internal mixing blades of mash cookers. B. General:
SIGNIFICANCE	Central to distillery operations.



5A-1-3/4 Mash Cookers



5A-2-5 Milled Grain Distribution Auger

ITEM NO.
5A-1-3/4

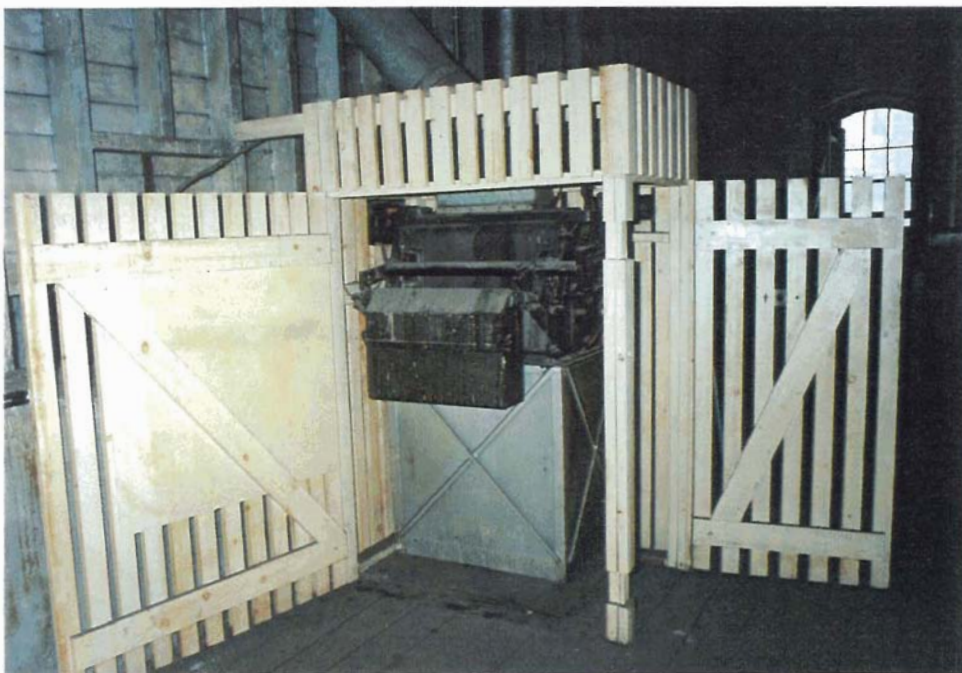
LOCATION	Building #5A Stone Distillery floor: 1	Compass: CEN.
ITEM NAME	Mash Cookers C1900-10	Quantity: 2
MARKINGS	None Observed	
MATERIALS	Primary: Formed boiler plate Rivetted construction Secondary: Cast gearing	
DIMENSIONS	Height: 10'	Width: 7'D Depth: 16'L
CONDITION	Out of service	
USAGE	A. Distillery= Used to cook mash for distillation. B. General:	
SIGNIFICANCE	Central to distillery operations.	

ITEM NO.
5A-2-5

LOCATION	Building #5A Stone Distillery floor: 2	Compass: CEN.
ITEM NAME	Milled Grain Distribution Auger	Quantity: 1
MARKINGS	None Observed	
MATERIALS	Primary: Formed sheet metal Secondary.. Steel auger screw	
DIMENSIONS	Height: 8'	Width: 20'L Depth: 6'
CONDITION	Out of service	
USAGE	A. Distillery: Used to feed the two mash cookers below with milled grain. B. General:	
SIGNIFICANCE	Central to distillery operations.	



5A-2-6 Small Mash Cooker



5A-3-7 Automatic Grain Scale "Wheat Scale"

ITEM NO.
5A-2-6

LOCATION Building #5A Stone Distillery **Floor:** 2 **Compass:** E

ITEM NAME Small Mash Cooker C1910 **Quantity:** 1

MARKINGS None Observed

MATERIALS **Primary:** Formed and rivetted copper tank
Secondary: Steel tubing - heating coil

DIMENSIONS **Height:** 5' **Width:** 3'6" **D** **Depth:**

CONDITION Out of service

USAGE A. **Distillery:** This unit is fed from wheat scale on above floor. Used to cook small quantities of mash.
B. **General:**

SIGNIFICANCE Central to distillery operations.

ITEM NO.
5A-3-7

LOCATION Building #5A Stone Distillery **Floor:** 3 **Compass:** E

ITEM NAME Automatic Grain Scale **Quantity:** 1
"Wheat Scale" C 1940?

MARKINGS (On plate) "RICHARDSON SCALE CO."
"CLIFTON, N.J."
"MODEL 9 EI S, COUNTER NO. 4210G"

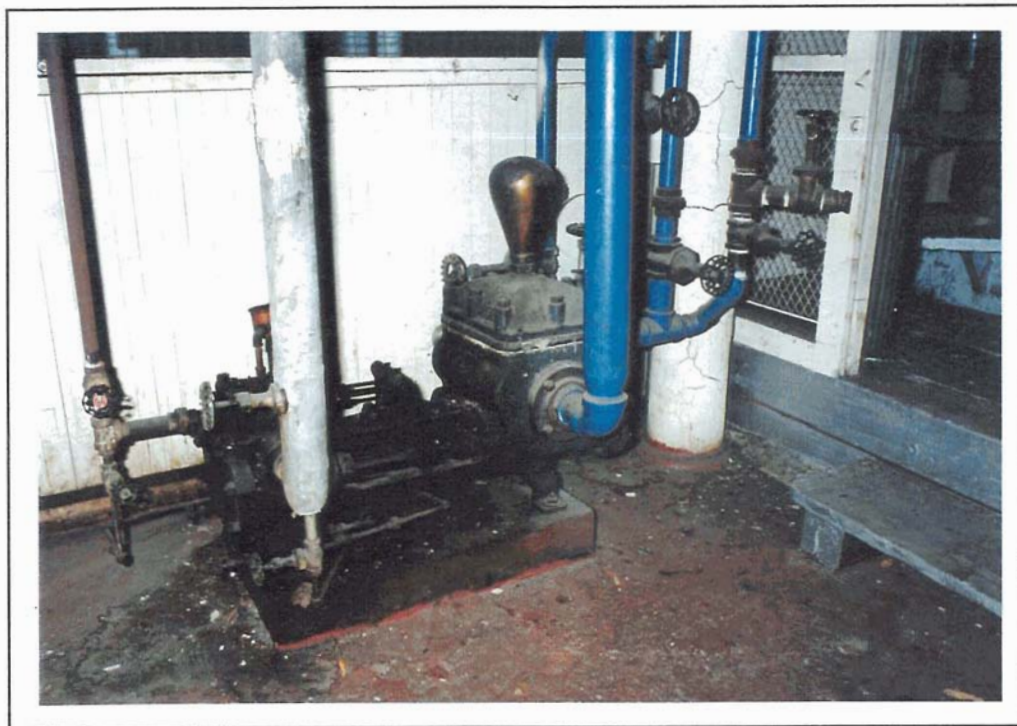
MATERIALS **Primary:** Steel castings
Sheet steel ducting
Secondary: Wood cage

DIMENSIONS **Height:** 7' **Width:** 5' **Depth:** 4'

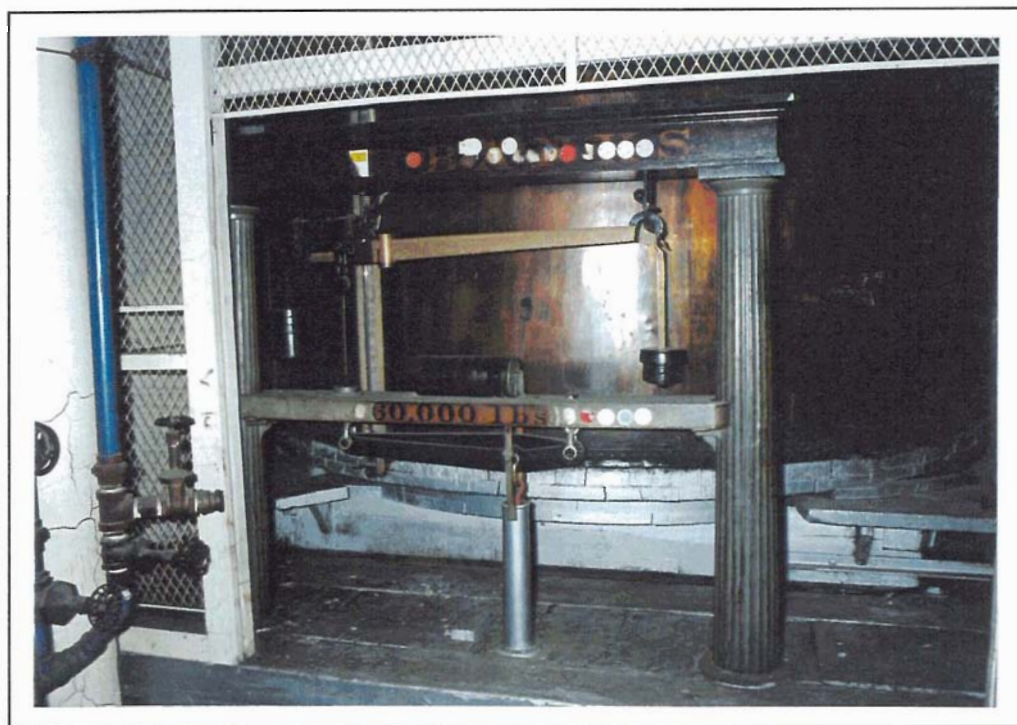
CONDITION Out of service

USAGE A. **Distillery:** Used to weigh milled grain fed to small mash cooker located below.
B. **General:**

SIGNIFICANCE Central to distillery operations.



5-1-1 Duplex Pump



5-1-2 Scale and Scale Tank

ITEM NO.
5-1-1

LOCATION Building #5 Distillery *Floor:* 1 *Compass:* N

ITEM NAME Duplex Pump C1900-1910 *Quantity:* 1

MARKINGS (On plate) "WORTHINGTON"
"SIZE 6 X 5 3/4 X 6 NO. 34281"
"STEAM PUMP"

MATERIALS *Primary:* Iron castings and machined steel
Secondary: Copper pipe and expansion chamber

DIMENSIONS *Height:* 3' *Width:* 4 1/2' *Depth:* 24"

CONDITION Out of service

USAGE A. *Distillery:* Transfer of spirit to receiver.
B. *General:*

SIGNIFICANCE Central to distillery operations.

ITEM NO.
5-1-2

LOCATION Building #5 Distillery *Floor:* 1 *Compass:* NW

ITEM NAME Scale and Scale Tank C1903 *Quantity:* 1

MARKINGS Stencil "FAIRBANKS" "60,000 LBS"
Beam "FAIRBANKS" "NO 103373"
Stencil "#1 WEIGHING TANK" "20,840 LITRES"

MATERIALS *Primary:* Tank: Formed and rivetted copper
Scale: Cast iron columns and linkage and pivot towers
Secondary: Wood scale top
Brass beam

DIMENSIONS *Height:* 5'9" *Width:* 78" *Depth:* 12" (Scale)

CONDITION Serviceable

USAGE A. *Distillery:* To receive and weigh proof spirits under excise control.
B. *General:*

SIGNIFICANCE Central to distillery operations - receiving.



5-1-3 Scale and Scale Tank



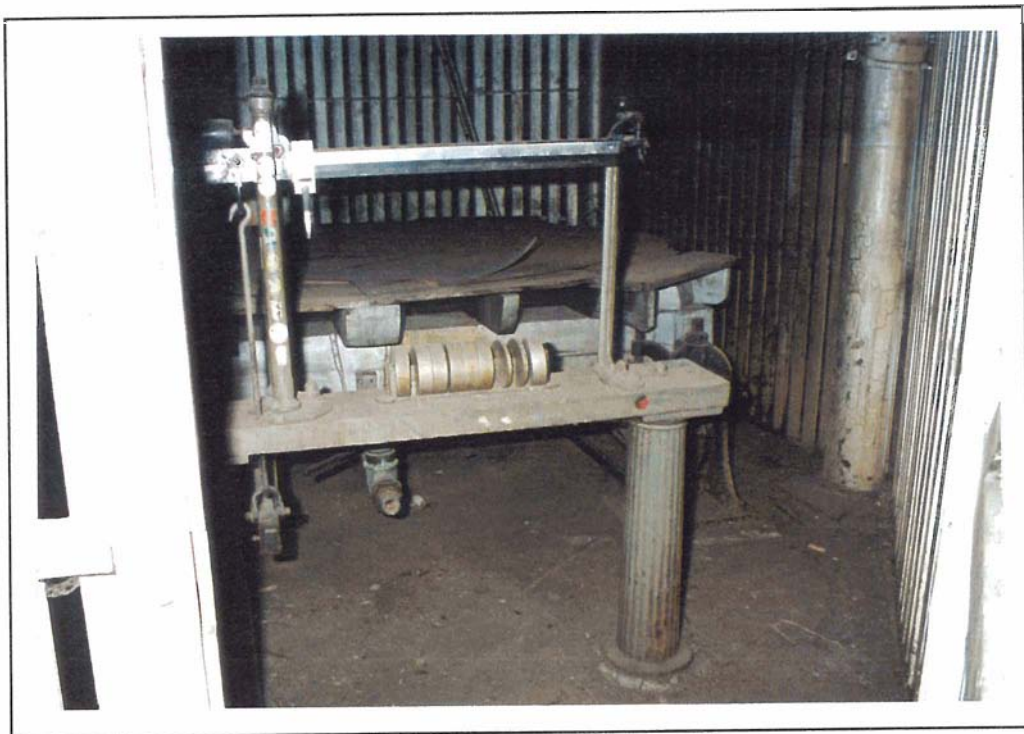
5-1-4 Scale and Scale Tank

ITEM NO.
5-1-3

LOCATION	Building #5 Distillery	Floor: 1	Compass: N
ITEM NAME	Scale and Scale Tank C1909	Quantity: 1	
MARKINGS	Beam "FAIRBANKS PATENT" Tank Stencil "NO. 2 FUSEL OIL SCALE TANK"		
MATERIALS	Primary: Tank: Formed and rivetted copper Scale: Scale columns, linkage and pivot towers Secondary: Beam: Brass		
DIMENSIONS	Height: 5'9"	Width: 4'2"	Depth: 12" (Scale)
CONDITION	Serviceable		
USAGE	A. Distillery: To receive fusel oil from distillation process. B. General:		
SIGNIFICANCE	Central to distillery operations - by-products.		

ITEM NO.
5-1-4

LOCATION	Building #5 Distillery	Floor: 1	Compass: W
ITEM NAME	Scale and Scale Tank C1920	Quantity: 1	
MARKINGS	Tank Stencil "NO. 2 SCALE TANK" Scale unmarked	"20,290 LITRES"	
MATERIALS	Primary: Tank: Formed and rivetted copper Scale: Cast iron columns, linkages and pivot towers Secondary: Glass gauge		
DIMENSIONS	Height: 4 1/2'	Width: 4'	Depth: 12" (Scale)
CONDITION	Serviceable		
USAGE	A. Distillery: To receive proof spirit under excise control B. General:		
SIGNIFICANCE	Central to distillery operations - receiving.		



5-1-5 Tank Scale



5-1-6 Floor Scale

ITEM NO.
5-1-5

LOCATION	Building #5 Distillery	Floor: 1	Compass.. NE
ITEM NAME	Tank Scale C1898	Quantity: 1	
MARKINGS	Beam "FAIRBANKS" "NO. 20432" "PATENT JAN. 1898"		
MATERIALS	Primary: Cast iron columns and uprights, linkages and pivot towers Secondary: Machined and plated steel beam		
DIMENSIONS	Height: 68"	Width: 63"	Depth: 12"
CONDITION			
USAGE	A. Distillery: To weigh proof spirits. B. General:		
SIGNIFICANCE	Central to distillery operations - receiving.		

ITEM NO.
5-1-6

LOCATION	Building #5 Distillery	Floor: 1	Compass E
ITEM NAME	Floor Scale C1910	Quantity: 1	
MARKINGS	Cast "FAIRBANKS STANDARD "NO. 8 MADE IN AMERICA '07"		
MATERIALS	Primary: Cast iron platform and wheels Secondary: Wood column, brass beam		
DIMENSIONS	Height: 56"	Width: 38"	Depth: 44"
CONDITION	Serviceable		
USAGE	A. Distillery: B. General: Weighing		
SIGNIFICANCE			



5-1-7 Distillation Columns - Badger



5-1-8 Distillation Columns

ITEM NO.
5-1-7

LOCATION	Building #5 Distillery	Floor: 1	Compass: W
ITEM NAME	Distillation Columns - Badger	Quantity: Quantity	
MARKINGS	Var.		
MATERIALS	Primary: Copper column sections Secondary: Copper piping		
DIMENSIONS	Height: Var.	Width:	Depth:
CONDITION	Out of service		
USAGE	A. Distillery: Distillation of beverage alcohol. B. General:		
SIGNIFICANCE	Central to distillery operations.		

ITEM NO.
5-1-8

LOCATION	Building #5 Distillery	Floor: 1	Compass: E
ITEM NAME	Distillation Columns	Quantity: Quantity	
MARKINGS	Var.		
MATERIALS	Primary: Copper column sections Secondary: Copper piping		
DIMENSIONS	Height: Var.	Width:	Depth:
CONDITION	Out of service		
USAGE	A. Distillery: Distillation of beverage alcohol. B. General:		
SIGNIFICANCE	Central to distillery operations.		



5-2-9 Anhydrous Alcohol Unit



5-2-10 Distillation Control Panel

ITEM NO.
5-2-9

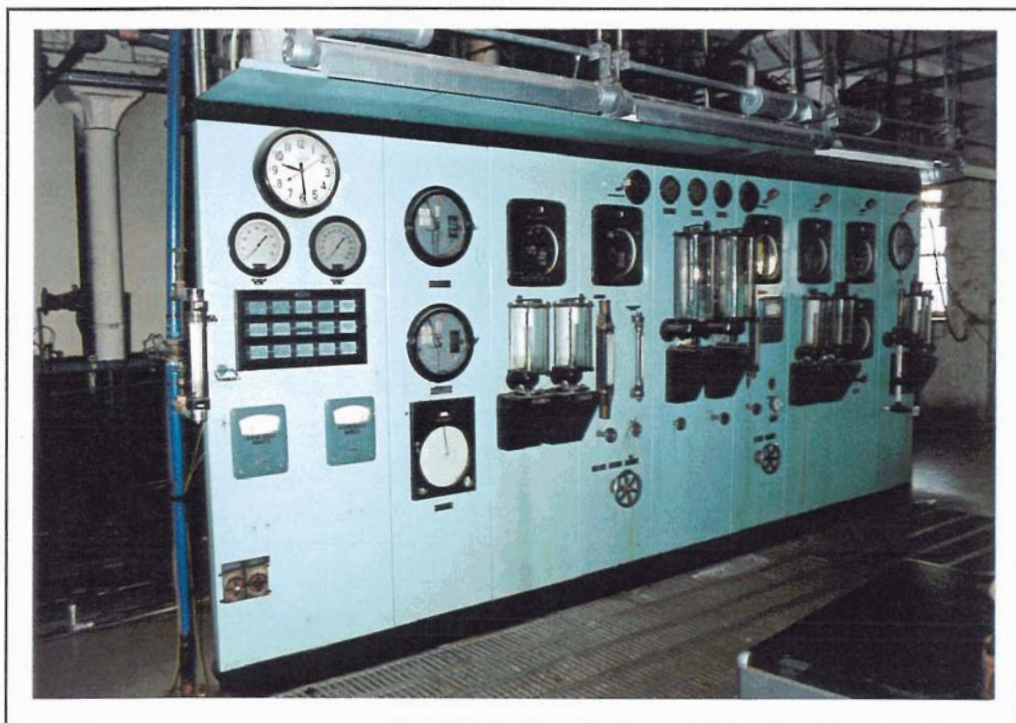
LOCATION	Building #5 Distillery	Floor: 2	Compass E
ITEM NAME	Anhydrous Alcohol Unit C1930	Quantity.. Quantity	
MARKINGS	Var.		
MATERIALS	Primary: Var. Secondary:		
DIMENSIONS	Height: Var.	Width:	Depth:
CONDITION	Out of service		
USAGE	A. Distillery: Distillation of industrial alcohols. B. General:		
SIGNIFICANCE	Central to industrial alcohol production.		

ITEM NO.
5-2-10

LOCATION	Building #5 Distillery	Floor: 2	Compass.. E
ITEM NAME	Distillation Control Panel	Quantity: 1 unit	
MARKINGS	None Observed		
MATERIALS	Primary: Painted steel Secondary: Brass valves		
DIMENSIONS	Height: 9'	Width: 12'	Depth: 12"
CONDITION	Out of service		
USAGE	A. Distillery: Controls distillation process for anhydrous alcohol. B. General:		
SIGNIFICANCE	Central to production of industrial alcohol.		



5-2-11 Tail Boxes



5-2-12 Distillation Control Panel

ITEM NO.
5-2-11

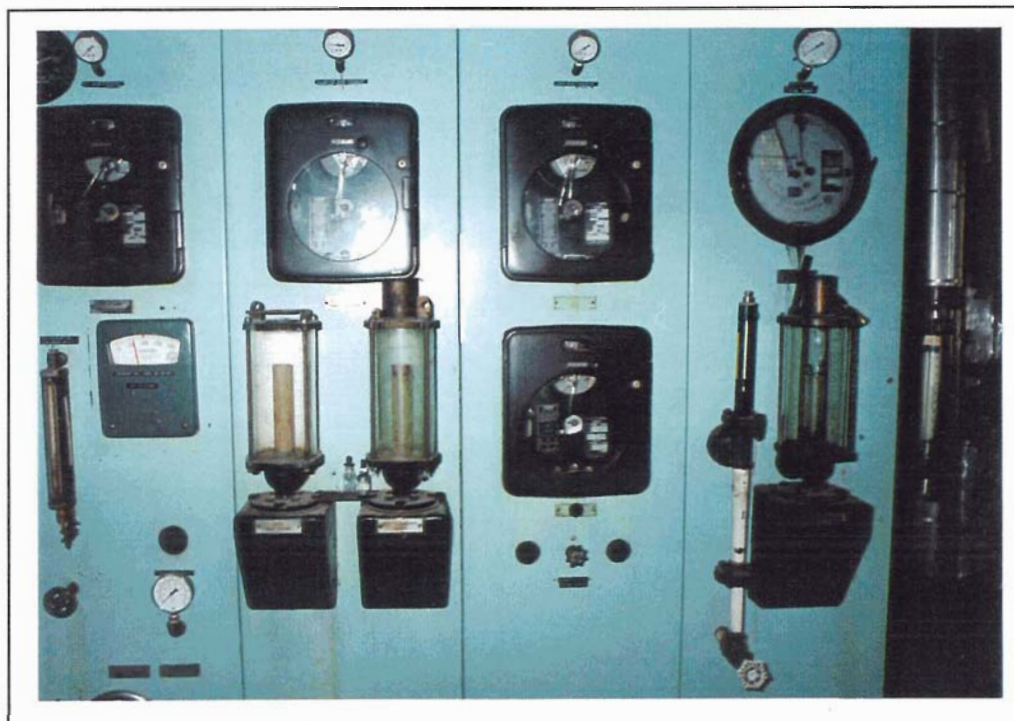
LOCATION	Building #5 Distillery	Floor: 2	Compass E
ITEM NAME	Tail Boxes C1930	Quantity: 3	
MARKINGS	(On plate) "E.B. BADGER & SONS CO." "BOSTON USA" "ESTABLISHED 1841" "ENGINEERS and SOLE CONSTRUCTORS OF BADGER CHEMICAL APPARATUS"		
MATERIALS	Primary: Cast bronze case Secondary: Glass flow tubes and hydrometers		
DIMENSIONS	Height: 23" 16"	Width: 8" 5"	Depth: 12" 8"
CONDITION	Out of service		
USAGE	A. Distillery: Monitors flow of alcohols from stills and permits measure of strength. B. General:		
SIGNIFICANCE	Central to operation of distillation process.		

ITEM NO.
5-2-12

LOCATION	Building #5 Distillery	Floor: 2	Compass: C
ITEM NAME	Distillation Control Panel C1940-50	Quantity: 1 unit	
MARKINGS	None Observed		
MATERIALS	Primary: Painted steel panels Secondary:		
DIMENSIONS	Height: 7'	Width: 20'	Depth: 2'
CONDITION	Out of service		
USAGE	A. Distillery.. Monitors and controls distillation process, both for Vulcan unit and Badger unit. B. General:		
SIGNIFICANCE	Central to distillation process of beverage alcohols.		



5-2-13 Tail Boxes



5-2-14 Tail Boxes

ITEM NO.
5-2-13
5-2-14

LOCATION	Building #5 Distillery	Floor: 2	Compass: C
ITEM NAME	Tail Boxes	Quantity: 7	
MARKINGS	Cast "THE VULCAN COPPER & SUPPLY CO." "CINCINNATI, OHIO"		
MATERIALS	Primary: Cast and machined bronze Secondary.. Glass covers, flow tubes and hydrometers		
DIMENSIONS	Height: Var.	Width:	Depth:
CONDITION	Out of service		
USAGE	A. Distillery: Monitors flow of alcohols from stills and permits measure of strength. B. General:		
SIGNIFICANCE	Central to operation of distillation process.		



5-2-15 Distillation Columns and Panel

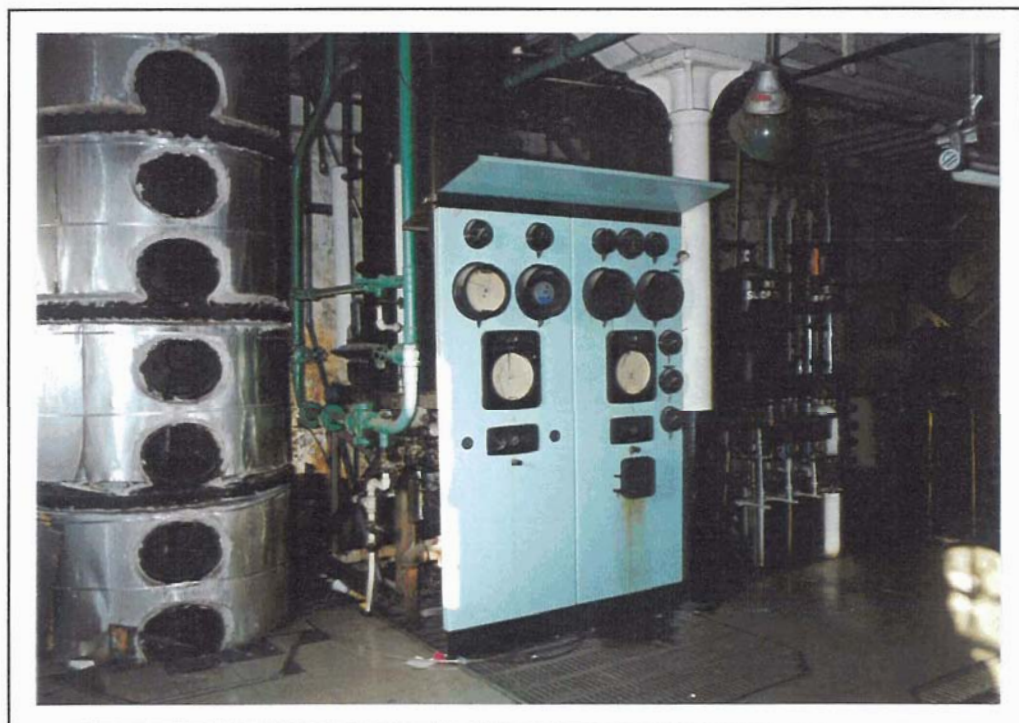


5-2-15A Distillation Columns and Panel

				ITEM NO. 5-2-15 5-2-15A
LOCATION	Building #5 Distillery	floor: 2	Compass: C	
ITEM NAME	Distillation Columns and Panel C1940-50	Quantity: Var.		
MARKINGS	Stills	"THE VULCAN COPPER AND SUPPLY CO." "CINCINNATI, OHIO"		
MATERIALS	Primary: Var. Secondary..			
DIMENSIONS	Height: Var.	Width:	Depth:	
CONDITION	Out of service			
USAGE	A. <i>Distillery:</i> Distillation of beverage alcohols. B. <i>General:</i>			
SIGNIFICANCE	Central to distillery operations.			



5-2-16 Control Panel



5-2-17 Distillation Columns and Panel

ITEM NO.
5-2-16

LOCATION	Building #5 Distillery	Floor: 2	Compass: W
ITEM NAME	Control Panel C1940-50	Quantity: 1 unit	
MARKINGS	None Observed		
MATERIALS	Primary: Painted steel panels Secondary: Steel and glass gauges		
DIMENSIONS	Height: 7'	Width: 6'	Depth: 24"
CONDITION	Partly in service		
USAGE	A. Distillery: Controls and monitors steam and air supply. B. General:		
SIGNIFICANCE	Central to distillation process.		

ITEM NO.
5-2-17

LOCATION	Building #5 Distillery	Floor: 2	Compass: W
ITEM NAME	Distillation Columns and Panel	Quantity.. Quantity	
MARKINGS	Still Plates "E.B. BADGER" "BOSTON, USA"		
MATERIALS	Primary: Copper still sections and decanters Secondary.. Copper pipe and brass valves		
DIMENSIONS	Height: Var.	Width:	Depth:
CONDITION	Out of service		
USAGE	A. Distillery.. Distillation of beverage alcohols. B. General:		
SIGNIFICANCE	Central to distillation operations.		



5-2-18 Slops Tester



5-2-19 Tail Boxes

ITEM NO.
5-2-18

LOCATION	Building #5 Distillery	Floor: 2	Compass W
ITEM NAME	Slops Tester	Quantity: 1 unit	
MARKINGS	Stencil	"NO. 2 SLOP TESTER" "NO. 2 STEAM REGULATOR"	
MATERIALS	Primary: Copper decanter sections Secondary: Glass and brass flow glasses		
DIMENSIONS	Height: Var.	Width:	Depth:
CONDITION	Out of service		
USAGE	A. Distillery: Monitors and tests flow of slops during distillation process. B. General:		
SIGNIFICANCE	Central to distillation process.		

ITEM NO.
5-2-19

LOCATION	Building #5 Distillery	Floor: 2	Compass: W
ITEM NAME	Tail Boxes	Quantity: 4	
MARKINGS	(On plate)	"E.B. BADGER & SONS CO." "BOSTON, USA" (see 5-2-11)	
MATERIALS	Primary: Cast and machined bronze Secondary: Glass covers, flow tubes and hydrometers		
DIMENSIONS	Height: 14"	Width: 6"	Depth: 6"
CONDITION	Out of service		
USAGE	A. Distillery: To monitor and measure flow of alcohol and fusel oil. B. General:		
SIGNIFICANCE	Central to distillation process.		



5-2-20 Distillation Columns (Badger)



5-3-21 Beer and Fusel Columns

ITEM NO.
5-2-20

LOCATION	Building #5 Distillery	Floor: 2	Compass: W
ITEM NAME	Distillation Columns (Badger)	Quantity: Quantity	
MARKINGS	Still plates	"E.B. BADGER & SONS" "BOSTON, USA"	
MATERIALS	Primary: Copper still sections Secondary: Copper piping, bronze		
DIMENSIONS	Height: Var.	Width:	Depth:
CONDITION	Out of service		
USAGE	A. Distillery: Distillation of beverage alcohols. B. General:		
SIGNIFICANCE	Central to distillation process.		

ITEM NO.
5-3-21

LOCATION	Building #5 Distillery	Floor: 3	Compass: W
ITEM NAME	Beer and Fusel Columns	Quantity: 2	
MARKINGS	None Observed		
MATERIALS	Primary: Copper still sections Secondary: Copper piping		
DIMENSIONS	Height: Var.	Width:	Depth:
CONDITION	Out of service		
USAGE	A. Distillery: Distillation of beverage alcohols. B. General:		
SIGNIFICANCE	Central to distillation process.		



5-3-22 Distillation Columns



5-4-23 Distillation Units

ITEM NO.
5-3-22

LOCATION	Building #5 Distillery	Floor: 3	Compass: E
ITEM NAME	Distillation Columns	Quantity:	Quantity
MARKINGS	Stencil	"HIGH WINES COOLER"	
MATERIALS	Primary: Copper still sections Secondary: Painted copper piping		
DIMENSIONS	Height: Var.	Mdth:	Depth:
CONDITION	Out of service		
USAGE	A. Distillery: Distillation of beverage alcohols. B. General:		
SIGNIFICANCE	Central to distillery operations.		

ITEM NO.
5-4-23

LOCATION	Building #5 Distillery	Floor: 4	Compass: W
ITEM NAME	Distillation Units C1930	Quantity:	Quantity
MARKINGS	Stencilled	"NO. 1 BEER HEATER" "NO. 2 DEPHLEGMATOR" "NO. 3 EXTRACTION COLUMN" "NO. 9 DEPHLEGMATOR"	
MATERIALS	Primary: Copper columns Secondary: Painted copper piping Bronze flow meters		
DIMENSIONS	Height: Var.	Mdth:	Depth:
CONDITION	Out of service		
USAGE	A. Distillery: Connected to the Badger distillation columns, to condense alcohol vapours. B. General:		
SIGNIFICANCE	Central to distillation process.		



5-4-24 Distillation Columns



5-4-25 Column Sections

ITEM NO.
5-4-24

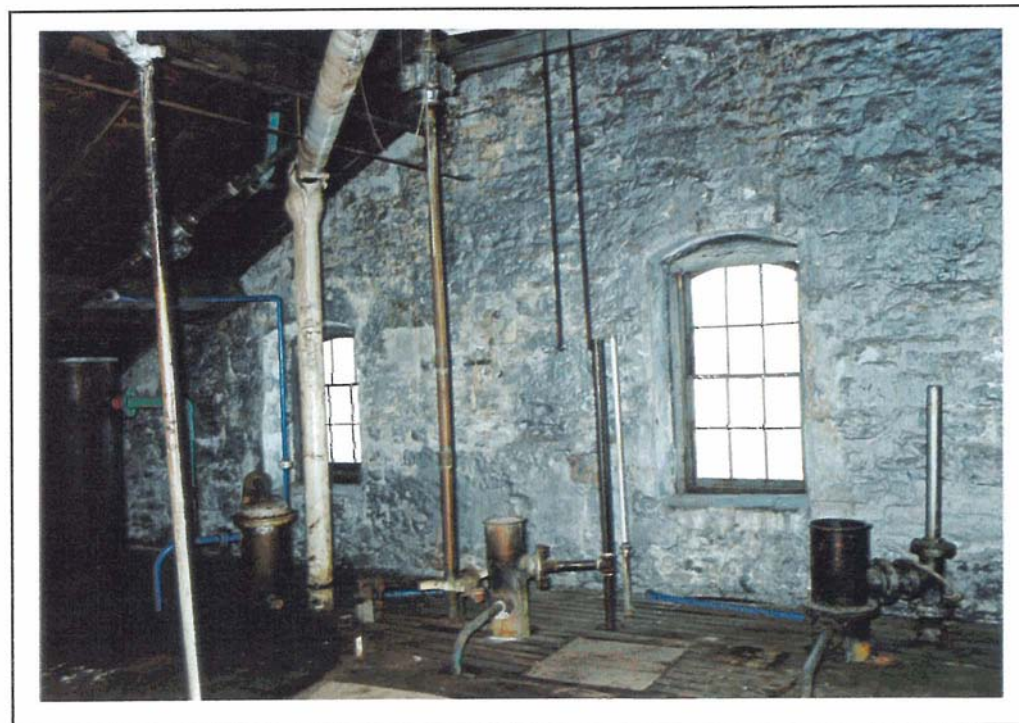
LOCATION	Building #5 Distillery	<i>floor:</i> 4	<i>Compass:</i> E
ITEM NAME	Distillation Columns C1940-50	<i>Quantity:</i>	Quantity
MARKINGS	Stills	"THE VULCAN COPPER & SUPPLY CO." "CINCINNATI, OHIO"	
MATERIALS	<i>Primary:</i> Copper column sections <i>Secondary</i> Painted copper piping		
DIMENSIONS	<i>Height:</i> Var.	<i>Width:</i>	<i>Depth:</i>
CONDITION	Out of service		
USAGE	A. <i>Distillery:</i> Distillation of beverage alcohol. B. <i>General:</i>		
SIGNIFICANCE	Central to distillation process.		

ITEM NO.
5-4-25

LOCATION	Building #5 Distillery	<i>floor:</i> 4	<i>Compass:</i> NW
ITEM NAME	Column Sections	<i>Quantity:</i>	Quantity
MARKINGS	Stencilled	"NO. 11" "STEAM REGULATOR"	
MATERIALS	<i>Primary:</i> Copper still sections and decanters <i>Secondary</i>		
DIMENSIONS	<i>Height:</i> Var.	<i>Width:</i>	<i>Depth:</i>
CONDITION	Out of service		
USAGE	A. <i>Distillery..</i> Surplus parts. B. <i>General:</i>		
SIGNIFICANCE			



5-4-26 Condensers



5-5-27 Condenser Top Vents

ITEM NO.
5-4-26

LOCATION	Building #5 Distillery	floor: 4	Compass: E
ITEM NAME	Condensers C1930	Quantity: 2	
MARKINGS	Stencilled	"NO. 6 PASTERIZER CONDENSER" "NO. 3 DEHYDRATER CONDENSER"	
MATERIALS	Primary: Copper column sections Secondary:		
DIMENSIONS	Height: 7"	Width: 20"D	Depth:
CONDITION	Out of service		
USAGE	A. Distillery: Related to anhydrous alcohol production, condensing of alcohol vapours. B. General:		
SIGNIFICANCE	Central to distillation process.		

ITEM NO.
5-5-27

LOCATION	Building #5 Distillery	Floor: 5	Compass W
ITEM NAME	Condenser Top Vents	Quantity: 4	
MARKINGS	None Observed		
MATERIALS	Primary: Copper Secondary:		
DIMENSIONS	Height: Var.	Width:	Depth:
CONDITION	Out of service		
USAGE	A. Distillery: Connected to the Badger distillation columns, to condense alcohol vapours. B. General:		
SIGNIFICANCE	Central to distillation process.		



5-5-28 Condensers and Dephlegmators



5-5-29 Hand Winch

DAVID NASBY & ASSOCIATES

ITEM NO. 5-5-28			
LOCATION	Building #5 Distillery	<i>Floor:</i> 5	<i>Compass:</i> E
ITEM NAME	Condensers and Dephlegmators	<i>Quantity:</i> 7	
MARKINGS	Various		
MATERIALS	<i>Primary:</i> Copper sections <i>Secondary:</i> Painted copper pipe		
DIMENSIONS	<i>Height:</i> Var.	<i>Width:</i>	<i>Depth:</i>
CONDITION	Out of service		
USAGE	A. <i>Distillery=</i> Condense at various degrees of alcohol, including final condensing of high alcohols. B. <i>General:</i>		
SIGNIFICANCE	Central to distillation process.		

ITEM NO. 5-5-29			
LOCATION	Building #5 Distillery	<i>Floor:</i> 5	<i>Compass:</i> SE
ITEM NAME	Hand Winch	<i>Quantity:</i> 1	
MARKINGS	None Observed		
MATERIALS	<i>Primary:</i> Cast and machined steel <i>Secondary:</i> Wire rope		
DIMENSIONS	<i>Height:</i> 3'	<i>Width:</i> 4'	<i>Depth:</i> 2'
CONDITION	Serviceable		
USAGE	A. <i>Distillery:</i> B. <i>General:</i> Equipment hoisting.		
SIGNIFICANCE	Related to maintenance function of distillery.		