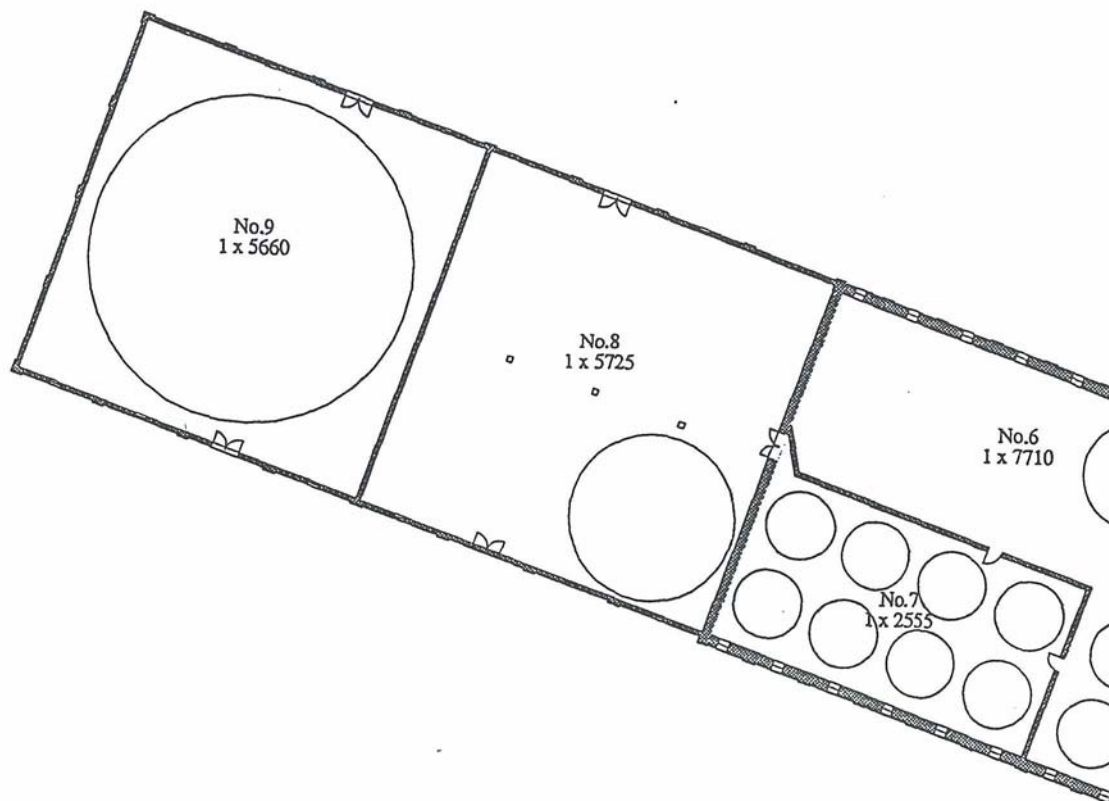


GROUP D: Stone Distillery Building Floor Plan



EQUIPMENT SUMMARY

BUILDING #6

Floor 1

6-1-1	Duplex Pump
6-1-2	Plate Filter
6-1-3	Filter/Pump

Floor 2

6-2-4	Scale & Scale Tank
-------	--------------------

BUILDING #7

Floor 1

No Equipment Observed

Floor 2

7-2-1	Sterilizer
7-2-2	Incubator
7-2-3	Yeast Tank
7-2-4	Yeast Tank
7-2-5	Yeast Tank
7-2-6	Scale & Tank

Floor 3 (Cupola)

7-3-7	Yeast Tub
-------	-----------

BUILDING #8

Floor 1

8-1-1	Hacksaw
8-1-2	Power Shear
8-1-3	Hand Shear
8-1-4	Duplex Pump
8-1-5	Desk
8-1-6	Cupboard
8-1-7	Cupboard
8-1-8	Lathe
8-1-9	Shaper
8-1-10	Milling Machine
8-1-11	Drill Press
8-1-11 A	Line Shafting
8-1-12	Anvil
8-1-13	Hole Punch
8-1-14	Pot
8-1-15	Belt Lace Vice
8-1-16/17	Pipe Wrenches
8-1-18/19	" "
8-1-20	Anvil

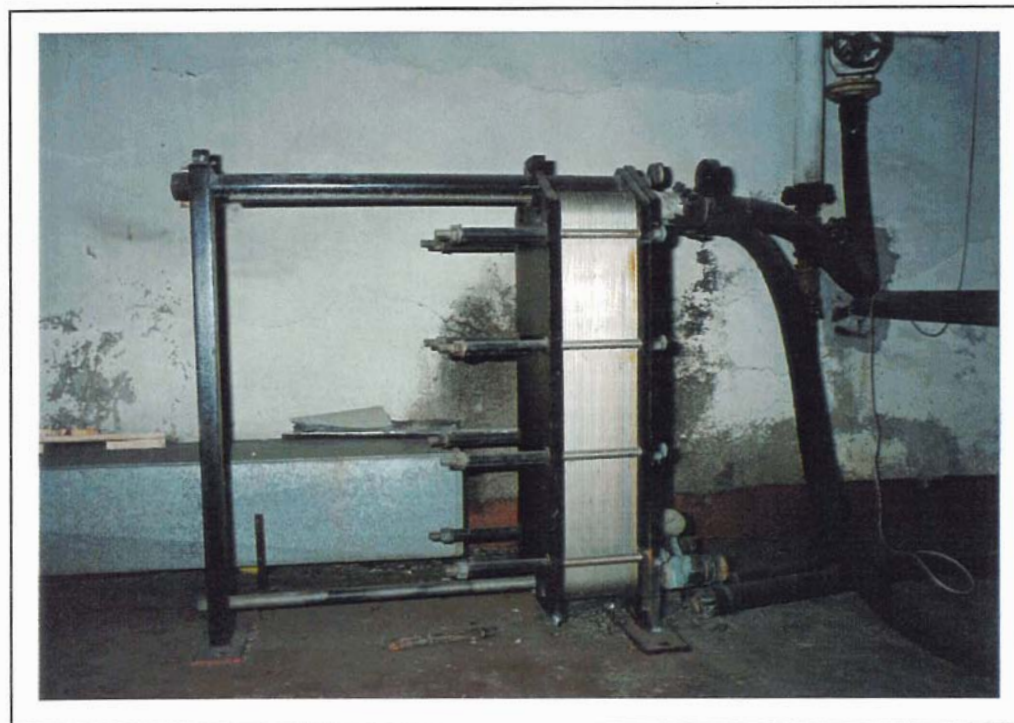
BUILDING #9

Floor 1

9-1-1	Duplex Pump
-------	-------------



6-1-1 Duplex Pump



6-1-2 Plate Filter

ITEM NO.
6-1-1

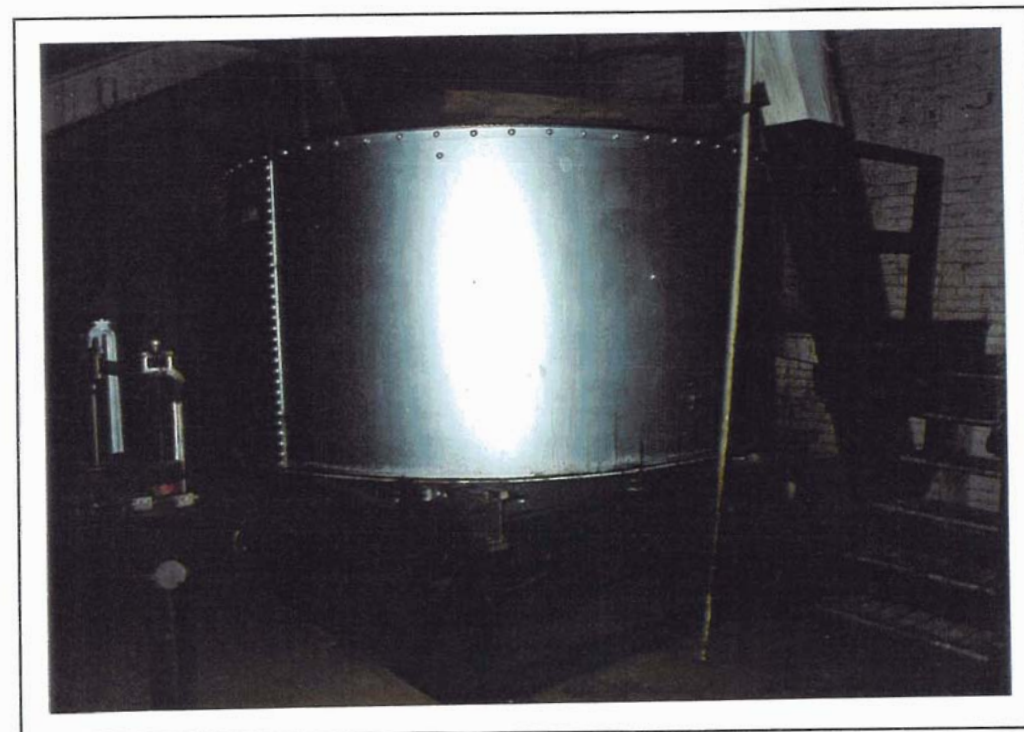
LOCATION	Building #6 Fermenting	Flooc 1	Compass: SE
ITEM NAME	Duplex Pump C1900	Quantity: 1	
MARKINGS	Cast	"WORTHINGTON"	
MATERIALS	Primary: Cast and machined steel Secondary		
DIMENSIONS	Height: 34"	Width: 60"	Depth: 18"
CONDITION	Out of service		
USAGE	A. Distillery: To pump fermented mash to beer well. B. General:		
SIGNIFICANCE	Central to distillery operations.		

ITEM NO.
6-1-2

LOCATION	Building #6 Fermenting	Floor: 1	Compass: NE
ITEM NAME	Plate Filter C1900	Quantity: 1	
MARKINGS	(On plate)	"APV" "THE APV COMPANY LTD., ENGLAND" "TYPE HMBL SER. NO. 106" "PROTECTED BY BRITISH & FOREIGN PATENTS" "MADE IN ENGLAND"	
MATERIALS	Primary: Machine steel Secondary.. Paper filter elements		
DIMENSIONS	Height: 52"	Width: 55"	Depth: 17"
CONDITION	Out of service		
USAGE	A. Distillery: Filtration of process water to supply mash tuns. B. General:		
SIGNIFICANCE	Central to distillery operations.		



6-1-3 Pump and Filter Unit



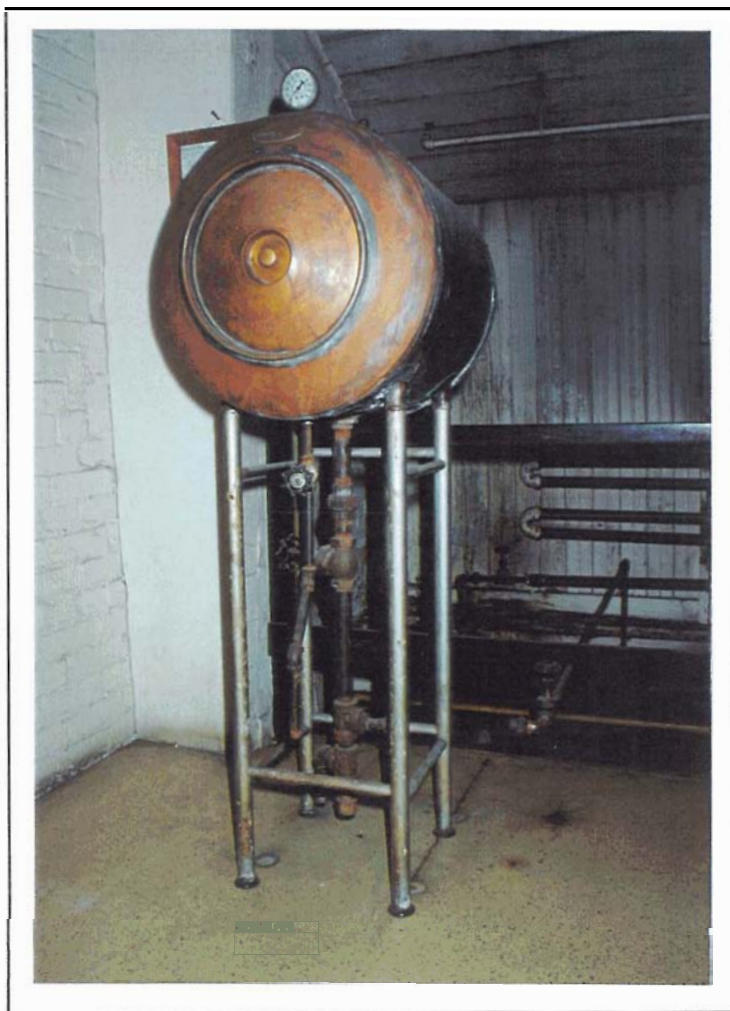
6-2-4 Scale and Scale Tank

ITEM NO.
6-1-3

LOCATION	Building #6 Fermenting	Floor: 1	Compass: SW
ITEM NAME	Pump and Filter Unit C1900	Quantity: 2	
MARKINGS	None Observed		
MATERIALS	Primary: Cast iron filter casings Secondary:		
DIMENSIONS	Height: 3'	Width: 15'	Depth: 2'
CONDITION	Out of service		
USAGE	A. Distillery: Filtration of process water. B. General:		
SIGNIFICANCE	Central to distillery process - fermenting.		

ITEM NO.
6-2-4

LOCATION	Building #6 Fermenting	Floor: 2	Compass: SW
ITEM NAME	Scale and Scale Tank C1910	Quantity: 1	
MARKINGS	Beam Stencilled "9 TON" "NO. 1 SCALE TANK"		
MATERIALS	Primary: Painted copper tank Cast and machined steel columns, linkages and pivot towers Secondary..		
DIMENSIONS	Height: Var.	Width:	Depth:
CONDITION	Out of service		
USAGE	A. Distillery: Supply for transfer of molasses to fermenters. B. General:		
SIGNIFICANCE	Central to distillery operations - fermenting.		



7-2-1 Steam Sterilizer



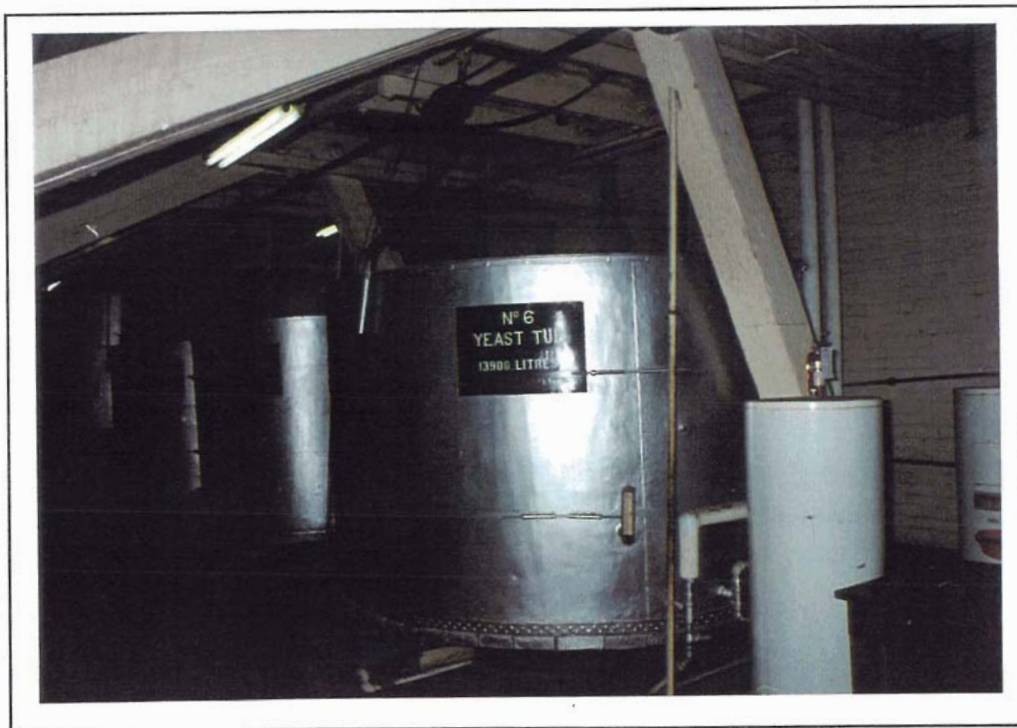
7-2-2 Incubator

ITEM NO.
7-2-1

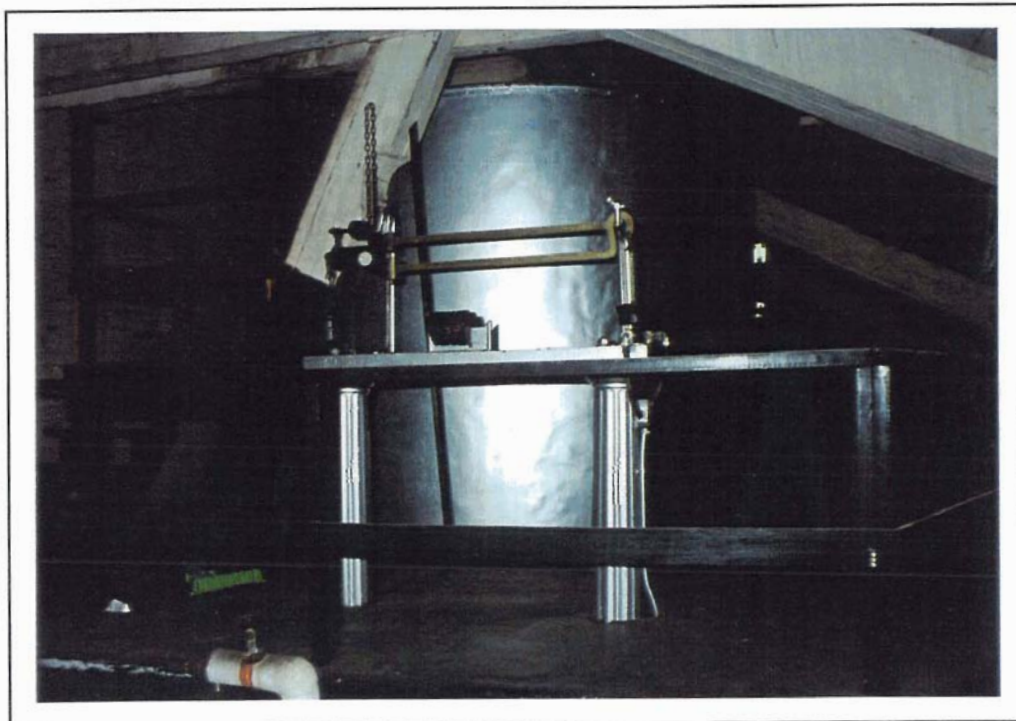
LOCATION	Building #7 Fermenting	Floor: 2	Compass: SE
ITEM NAME	Steam Sterilizer C1900	Quantity: 1	
MARKINGS	(On plate) "ECLIPSE STERILIZER" "PATD FEB 20, 1900" "2B" "BRAMHALL DEANE CO" "NEW YORK"		
MATERIALS	Primary: Formed and brazed copper Secondary: Iron stand and piping		
DIMENSIONS	Height: 61"	Width: 20"D	Depth: 25"
CONDITION	Out of service		
USAGE	A. Distillery B. General: Sterilize lab ware.		
SIGNIFICANCE	Related to distillery quality control.		

ITEM NO.
7-2-2

LOCATION	Building #7 Fermenting	floor: 2	Compass: NE
ITEM NAME	Incubator C1900	Quantity: 1	
MARKINGS	None Observed		
MATERIALS	Primary: Wood casing and stand Secondary: Iron pipe		
DIMENSIONS	Height: 5'3"	Width: 54"	Depth: 24"
CONDITION	Out of service		
USAGE	A. Distillery: Incubation of yeast cultures. B. General:		
SIGNIFICANCE	Central to distillery operations - fermenting.		



7-2-31415 Yeast Tubs and Mixers

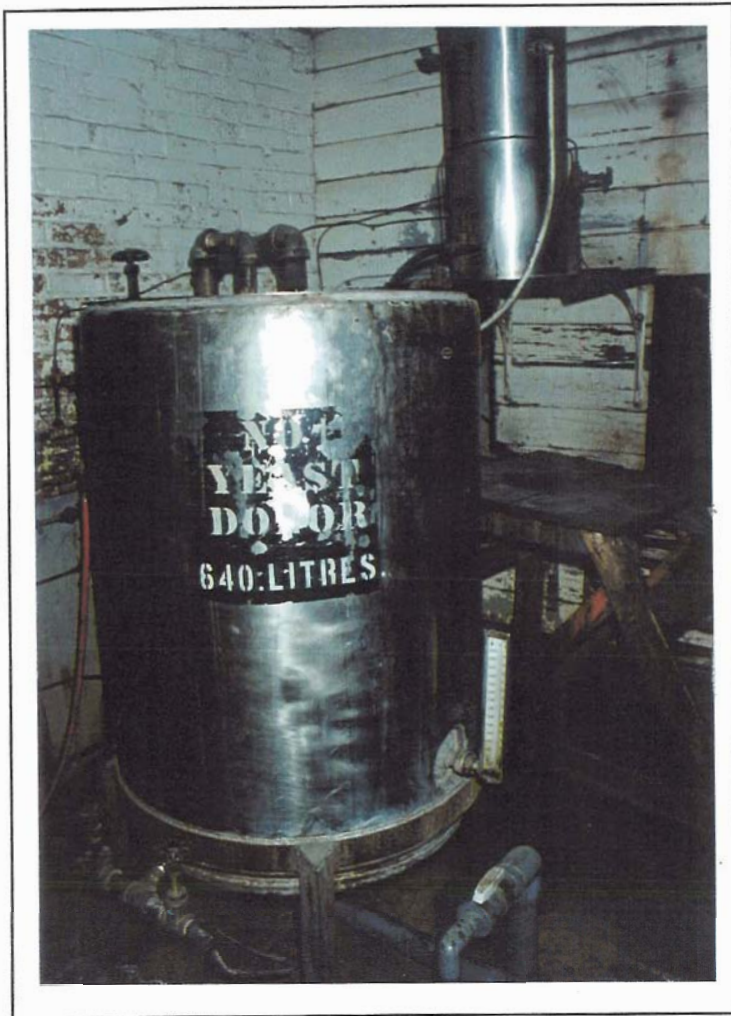


7-2-6 Scale and Scale Tank

DAVID NASBY & ASSOCIATES

			ITEM NO. 7-2-31415	
LOCATION	Building #7 Fermenting	Floor: 2	Compass: N	
ITEM NAME	Yeast Tubs and Mixers C1900	Quantity: 3		
MARKINGS	Stencilled	"NO. 6 YEAST TUB" "NO. 7 YEAST TUB" "NO. 8 YEAST TUB"		
MATERIALS	Primary: Painted copper tanks Secondary: Machined steel line shafting			
DIMENSIONS	Height: Var.	Width:	Depth:	
CONDITION	Out of service			
USAGE	A. Distillery: To contain and mix yeast mixture for transfer to fermenting tubs. B. General:			
SIGNIFICANCE	Central to distillery operations - fermenting.			

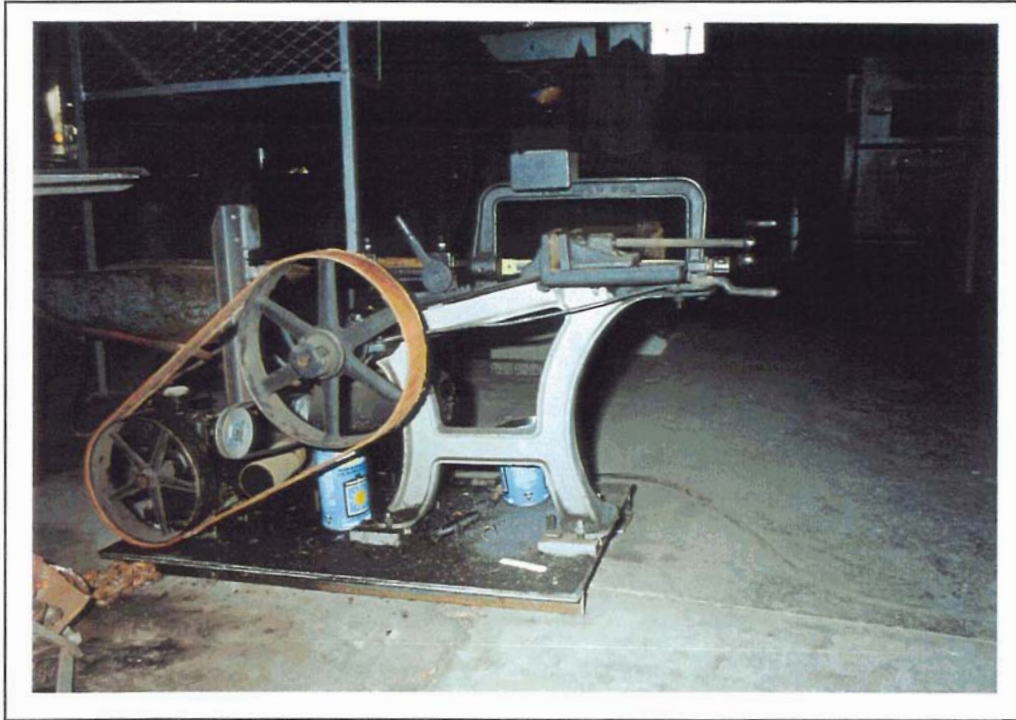
			ITEM NO. 7-2-6	
LOCATION	Building #7 Fermenting	Floor: 2	Compass: NW	
ITEM NAME	Scale and Scale Tank C1900	Quantity: 1		
MARKINGS	Stencilled Beam	"NO. 2 SCALE TANK" "FAIRBANKS" "CAPY 20,000 LBS"		
MATERIALS	Primary: Painted copper tank Cast columns, linkages and pivot towers Secondary: Brass beam			
DIMENSIONS	Height: 8'	Width: 9'D	Depth:	
CONDITION	Out of service			
USAGE	A. Distillery: Unknown B. General:			
SIGNIFICANCE				



7-3-7 Yeast Donor *Tubs*

ITEM NO.
7-3-7

LOCATION	Building #7 Fermenting	Floor: 3	Compass:
ITEM NAME	Yeast Donor Tubs	Quantity: 1 unit	
MARKINGS	Stencilled	"NO. 1 YEAST DONOR"	"640 litres"
MATERIALS	Primary:	Stainless steel	
	Secondary:	Copper, brass piping	
DIMENSIONS	Height: 4'	Width: 36"D	Depth:
CONDITION	Out of service		
USAGE	A. Distillery=	To cultivate parent yeasts for fermenting.	
	B. General:		
SIGNIFICANCE	Central to distillery operations - fermenting.		



8-1-1 Power Hacksaw



8-1-2 Power Shear

ITEM NO.
8-1-1

LOCATION Building #8 Machine Shop *Floor: 1* *Compass: W*

ITEM NAME Power Hacksaw *Quantity: 1*

MARKINGS Cast "MARVEL DRAG"
"PAT'D APPL. FOR"

MATERIALS *Primary:* Cast and machined steel
Secondary: Leather belt

DIMENSIONS *Height: 2'* *Width: 3'* *Depth: 18"*

CONDITION Serviceable

USAGE A. *Distillery:*
B. *General:* Fabrication of metal parts.

SIGNIFICANCE Related to maintenance operations of distillery.

ITEM NO.
8-1-2

LOCATION Building #8 Machine Shop *Floor: 1* *Compass: W*

ITEM NAME Power Shear *Quantity: 1*

MARKINGS Cast "EXCELSIOR"
"TOOL & MACHINE CO." "NO. 48"
"EAST ST. LOUIS, ILL."

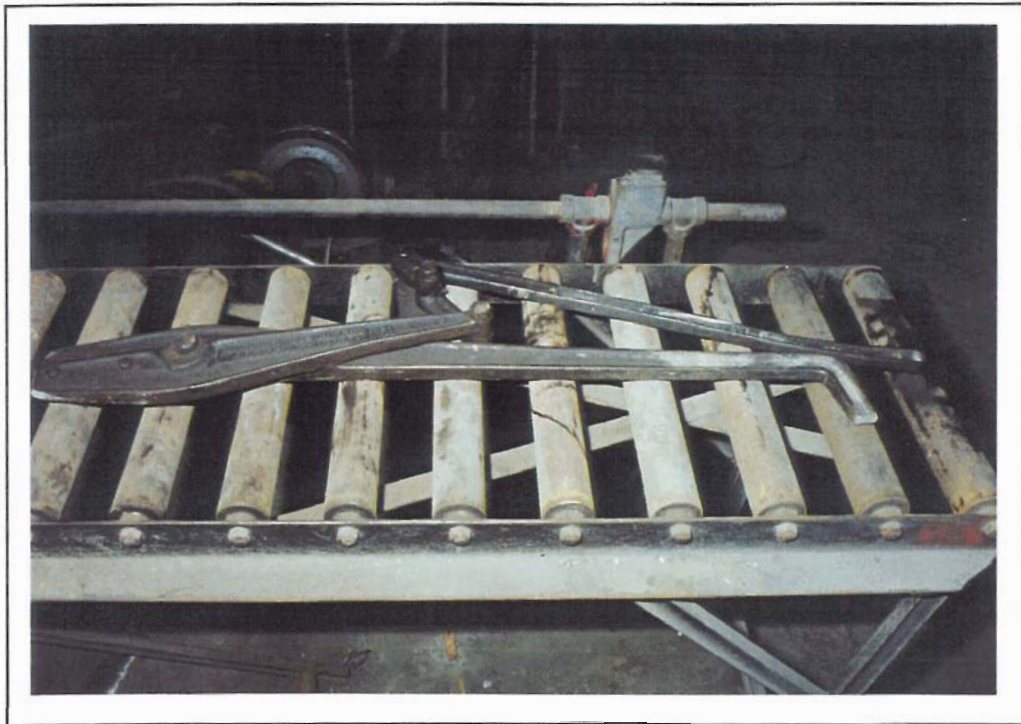
MATERIALS *Primary:* Cast and machined steel
Secondary:

DIMENSIONS *Height: 78"* *Width: 70"* *Depth: 4'4"*

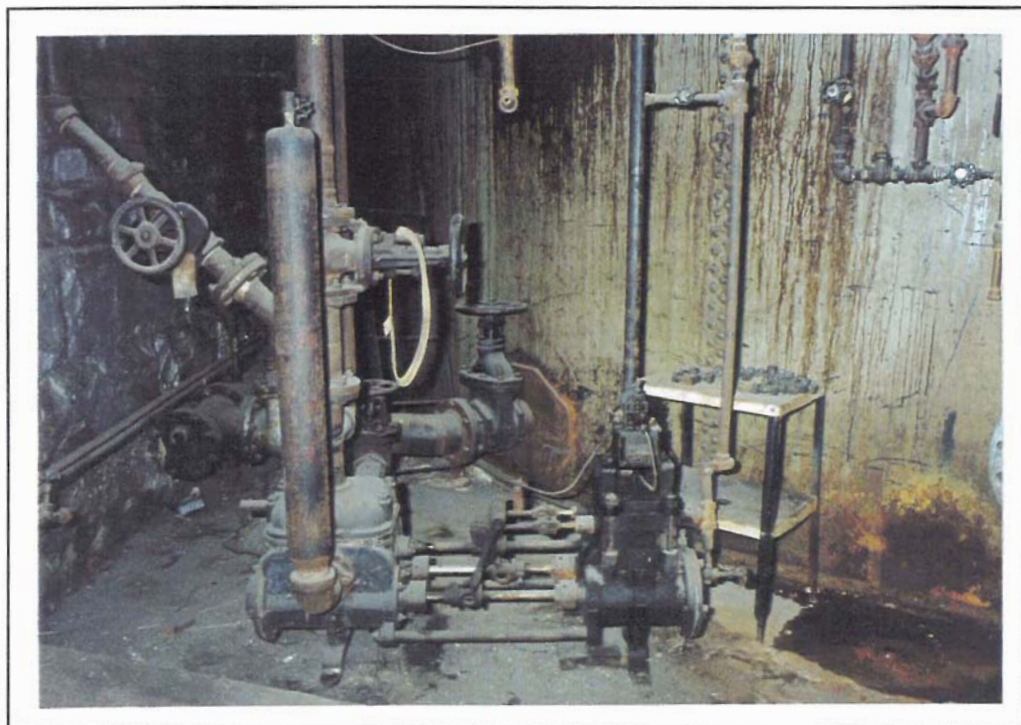
CONDITION Serviceable

USAGE A. *Distillery..*
B. *General:* Used to cut plate and sheet metal.

SIGNIFICANCE Related to maintenance operations and perhaps coppersmithing.



8-1-3 Hand Shear



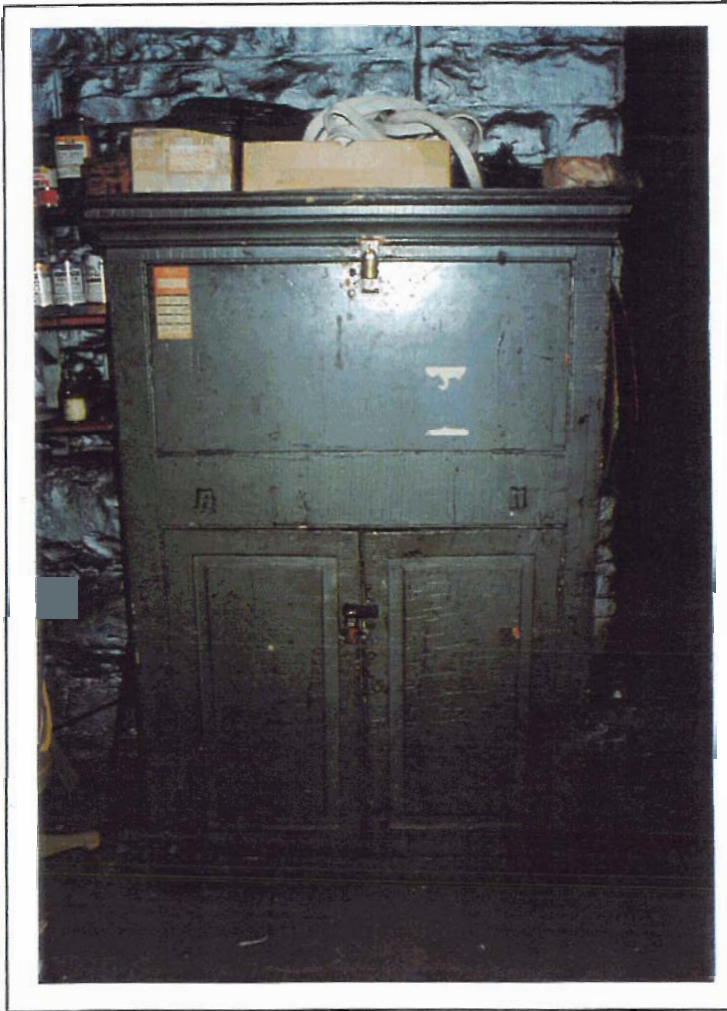
8-1-4 Duplex Pump

ITEM NO.
8-1-3

LOCATION	Building #8 Machine Shop	floor: 1	Compass: W
ITEM NAME	Hand Shear	Quantity: 1	
MARKINGS	Cast	"BROWN BOGGS CO. LTD." "HAMILTON, CANADA"	
MATERIALS	Primary: Cast and machined steel Secondary:		
DIMENSIONS	Height: 8"	Width: 37"L	Depth:
CONDITION	Serviceable		
USAGE	A. Distillery.. B. General: Used to sheer sheet metal.		
SIGNIFICANCE	Related to maintenance/fabrication operations, perhaps coppersmithing.		

ITEM NO.
8-1-4

LOCATION	Building #8 Machine Shop	floor: 1	Compass: SE
ITEM NAME	Duplex Pump C1900	Quantity: 1	
MARKINGS	Cast	"T. LEPPER & SONS LTD." "TORONTO"	
MATERIALS	Primary: Cast and machined steel Secondary:		
DIMENSIONS	Height: 33"	Width: 48"	Depth: 16"
CONDITION	Out of service		
USAGE	A. Distillery: Used to pump molasses. B. General:		
SIGNIFICANCE	Central to distillery operations.		



8-1-5 Stand-up Desk/Cupboard



8-1-6 Storage Cupboard

ITEM NO.
8-1-5

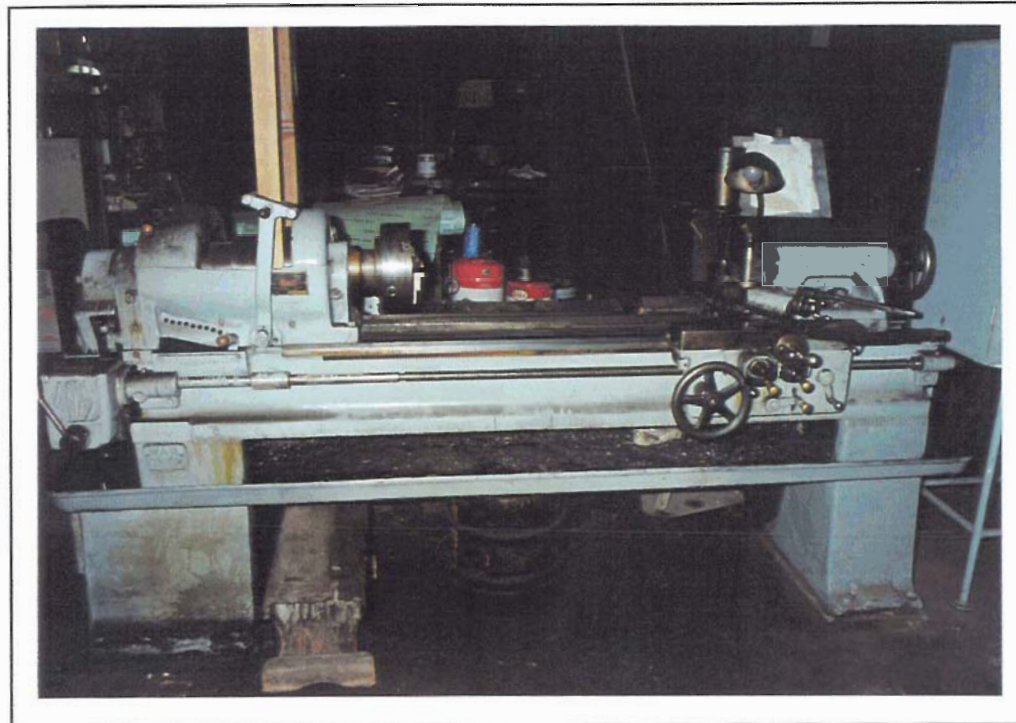
LOCATION	Building #8 Machine Shop	Floor: 1	Compass: SE
ITEM NAME	Stand-up Desk/Cupboard C1880	Quantity: 1	
MARKINGS	None Observed		
MATERIALS	Primary: Painted wood Secondary:		
DIMENSIONS	Height: 6'3"	Width: 50"	Depth: 22"
CONDITION	Fair		
USAGE	A. Distillery: B. General: Used to store tools.		
SIGNIFICANCE	Related to maintenance function of distillery.		

ITEM NO.
8-1-6

LOCATION	Building #8 Machine Shop	Floor: 1	Compass: NE
ITEM NAME	Storage Cupboard C1900	Quantity: 1	
MARKINGS	None Observed		
MATERIALS	Primary: Painted wood Secondary:		
DIMENSIONS	Height: 5'	Width: 3'	Depth: 22"
CONDITION	Fair		
USAGE	A. Distillery: B. General: Used to store tools.		
SIGNIFICANCE	Related to maintenance of distillery.		



8-1-7 Storage Cupboard



8-1-8 Engine lathe

ITEM NO.
8-1-7

LOCATION Building #8 Machine Shop **Floor:** 1 **Compass:** NE

ITEM NAME Storage Cupboard C1880 **Quantity:** 1

MARKINGS None Observed

MATERIALS **Primary:** Painted wood
Secondary:

DIMENSIONS **Height:** 6' **Width:** 7' **Depth:** 22"

CONDITION Fair

USAGE A. **Distillery:**
B. **General:** Used to store tools.

SIGNIFICANCE Related to maintenance operations.

ITEM NO.
8-1-8

LOCATION Building #8 Machine Shop **Floor:** 1 **Compass:** NE

ITEM NAME Engine Lathe C1910-20 **Quantity:** 1

MARKINGS (On plate) "CMC" "GALT CANADA"
"IRON & WOODWORKING MACHINE TOOLS"
"SER NO 8861"
Cast "WAR FINISH"

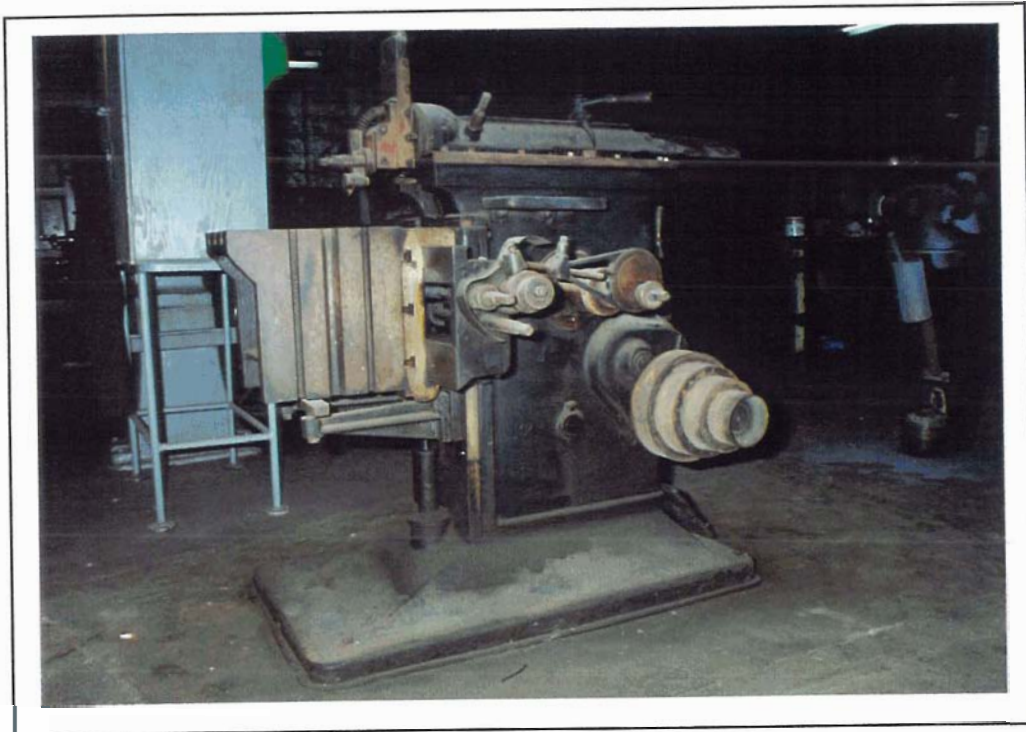
MATERIALS **Primary:** Cast and machined steel
Secondary: Leather belt

DIMENSIONS **Height:** 50' **Width:** 9' **Depth:** 30"

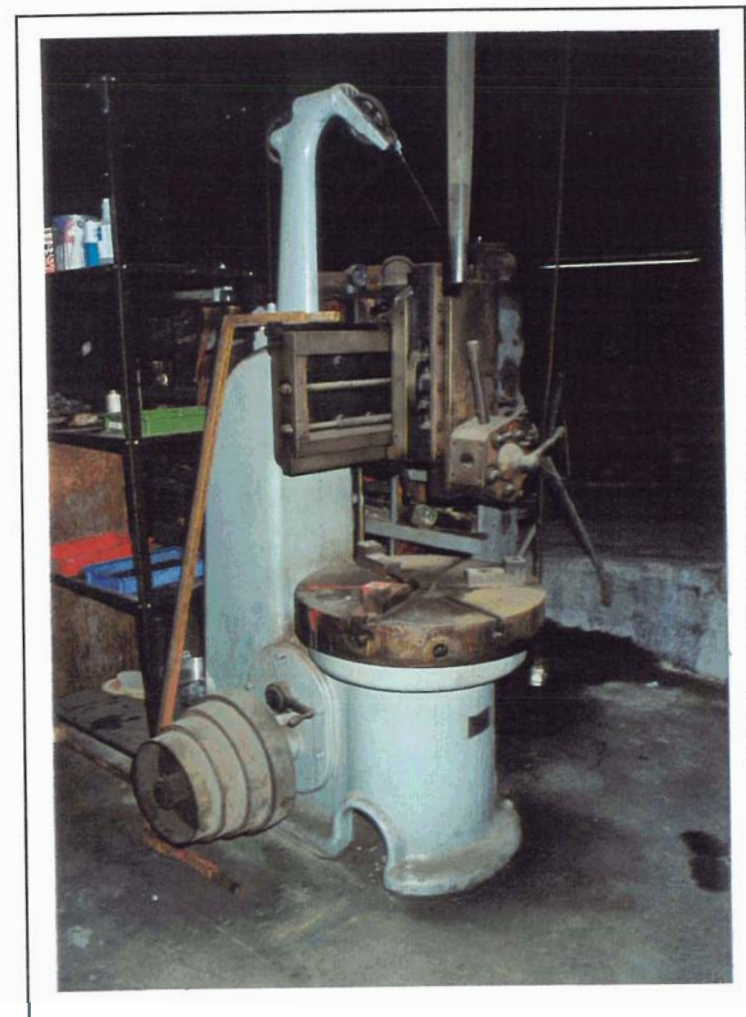
CONDITION Serviceable

USAGE A. **Distillery:**
B. **General:** Fabrication of equipment or repair parts.

SIGNIFICANCE Related to maintenance/fabrication operations.



8-1-9 Metal Shaper



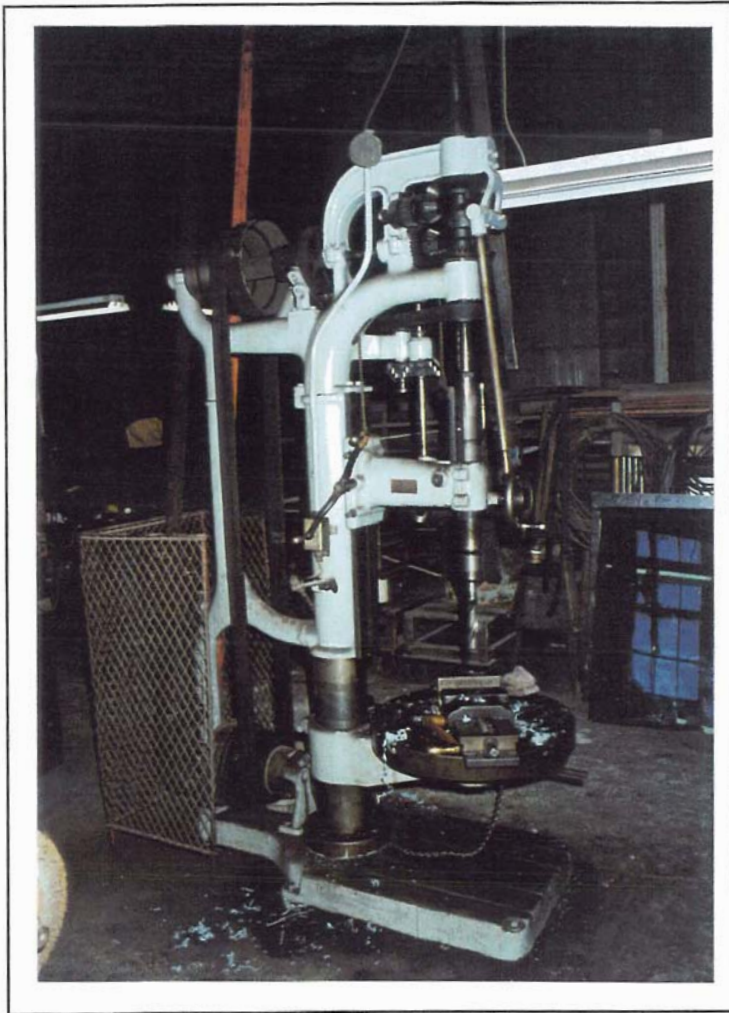
8-1-10 Turret Milling Machine

ITEM NO.
8-1-9

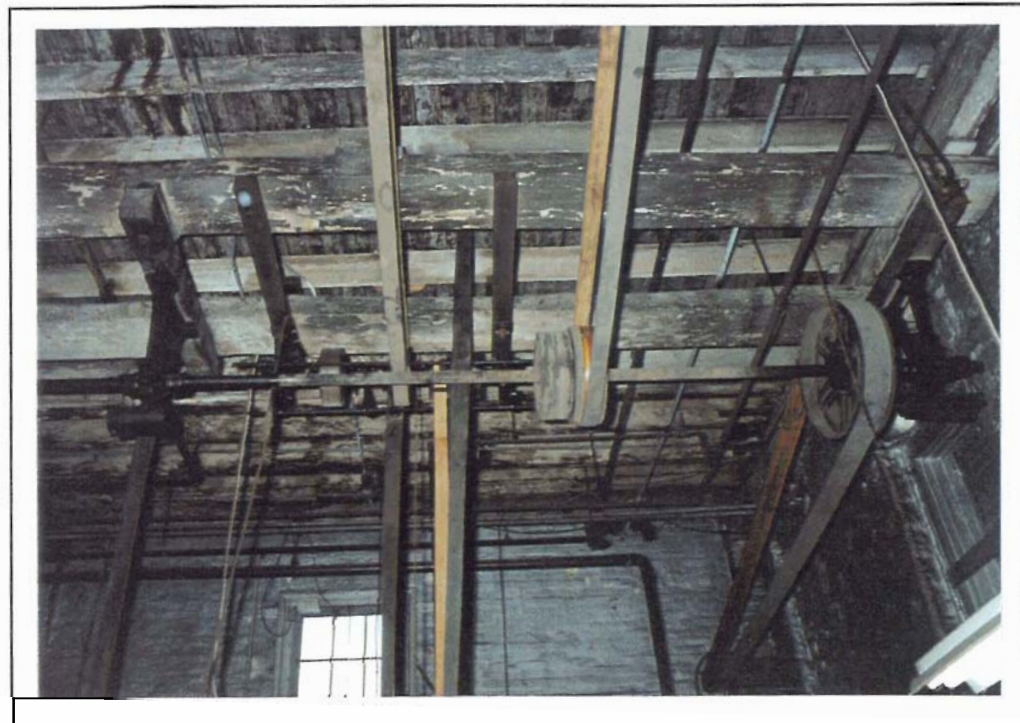
LOCATION	Building #8 Machine Shop	Floor: 1	Compass: NE
ITEM NAME	Metal Shaper C1900-10	Quantity: 1	
MARKINGS	Cast	"MADE FOR NILES-BEMENT POND CO." "NEW YORK" "RUMLEY-WACHS MACHINERY CO., CHICAGO, ILL."	
MATERIALS	Primary: Cast and machined steel Secondary:		
DIMENSIONS	Height: 57"	Width: 56"	Depth: 36"
CONDITION	Out of service		
USAGE	A. Distillery: B. General: Shape metal.		
SIGNIFICANCE	Related to maintenancelfabrication operations.		

ITEM NO.
8-1-10

LOCATION	Building #8 Machine Shop	Floor: 1	Compass: NW
ITEM NAME	Turret Milling Machine C 1900-10	Quantity: 1	
MARKINGS	Cast	"COLBURN" "MACHINERY TOOL CO" "FRANKLIN PA" "PAT APPL FOR" (On plate) "McDOWELL & STOCKER & CO. MACHINERY" "59 & 61 SO. CANAL ST." "CHICAGO"	
MATERIALS	Primary: Cast and machined steel Secondary:		
DIMENSIONS	Height: 7' 10"	Width: 56"	Depth: 48"
CONDITION	Out of service		
USAGE	A. Distillery: B. General: To machine metal for repair/fabrication.		
SIGNIFICANCE	Related to maintenancelfabrication operations.		



8-1-11 Drill Press



8-1-11A Line Shafting and Belting

ITEM NO.
8-1-11

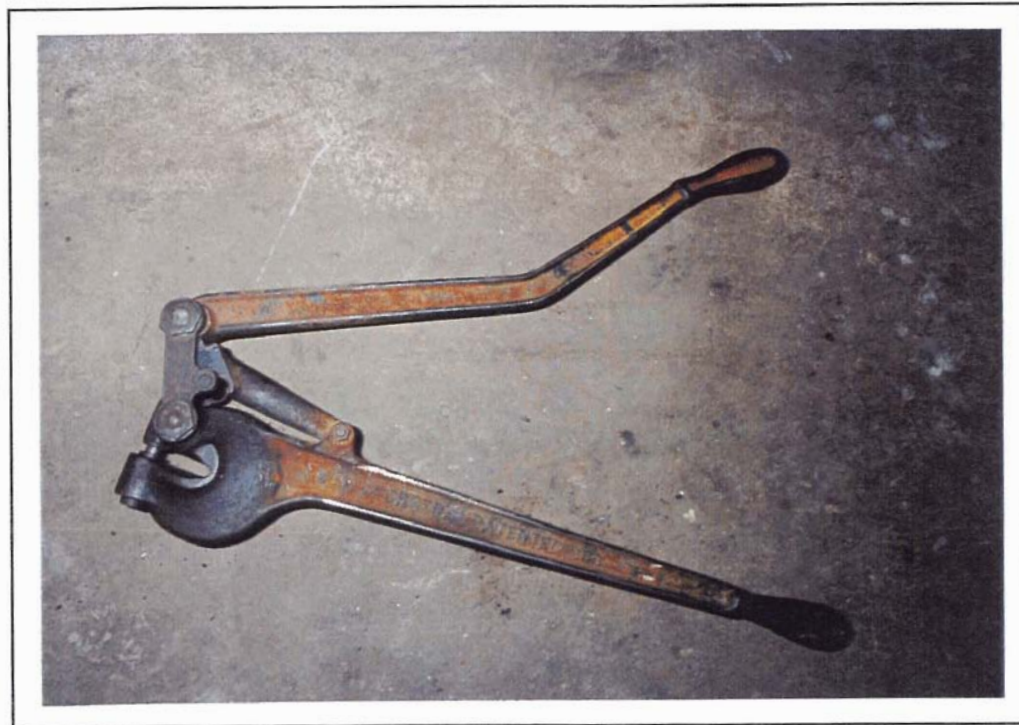
LOCATION	Building #8 Machine Shop	Floor: 1	Compass: C
ITEM NAME	Drill Press	Quantity:- 1	
MARKINGS	(On plate)	"E.L. ESSLEY MACHINERY CO." "928"	"THE KERN" "MACHINE TOOL CO." "CINCINNATI, USA"
MATERIALS	Primary: Cast and machined steel Secondary: Leather belting		
DIMENSIONS	Height: 9'	Width: 62"	Depth: 3'
CONDITION	Serviceable		
USAGE	A. Distillery: B. General: Drilling metal		
SIGNIFICANCE	Related to maintenance/fabrication operations.		

ITEM NO.
8-1-11A

LOCATION	Building #8 Machine Shop	Floor: 1	Compass: C
ITEM NAME	Line Shafting and Belting	Quantity: Quantity	
MARKINGS	None Observed		
MATERIALS	Primary: Cast steel Secondary: Leather		
DIMENSIONS	Height: Var.	Width:	Depth:
CONDITION	Serviceable		
USAGE	A. Distillery: B. General: To power machinery from central motor.		
SIGNIFICANCE	Related to maintenance/fabrication operations.		



8-1-12 Anvil



8-1-13 Hole Punch

ITEM NO.
8-1-12LOCATION Building #8 Machine Shop *floor:* 1 *Compass:* NWITEM NAME Anvil C1900 *Quantity:* 1MARKINGS Cast "PETER WRIGHT"
"PATENT"
"ENGLAND" "SOLID WROUGHT"MATERIALS *Primary:* Wrought steel
*Secondary:*DIMENSIONS *Height:* 11" *Width:* 24" *Depth:* 9"

CONDITION Serviceable

USAGE A. *Distillery:*
B. *General:* Metal forming - maintenance.

SIGNIFICANCE

ITEM NO.
8-1-13LOCATION Building #8 Machine Shop *Floors* 1 *Compass:* NEITEM NAME Hole Punch C1908 *Quantity:* 1MARKINGS Cast "WHITNEY MFG. CO"
"ROCKFORD, ILL." "WHITNEY HAND PUNCH #2"
"DROP FORGED"
"PATENTED SEPT. 8, 1908"MATERIALS *Primary:* Cast and machined steel
*Secondary:*DIMENSIONS *Height:* 17" *Width:* 21"L *Depth:*

CONDITION Serviceable

USAGE A. *Distillery:* Used to punch holes for rivets in banding in making barrel hoops.
B. *General:*

SIGNIFICANCE Central to distillery cooperage operations.



8-1-14 Melt Pot



8-1-15 Belt Lace Vice

ITEM NO.
8-1-14

LOCATION Building #8 Machine Shop **Floor:** 1 **Compass:** N

ITEM NAME Melt Pot Quantify: 1

MARKINGS None Observed

MATERIALS **Primary:** Cast iron
Secondary:

DIMENSIONS **Height:** 13" **Width:** 21"D **Depth:**

CONDITION Serviceable

USAGE A. **Distillery:**
B. **General:** Used to melt pot lead for poured bearings.

SIGNIFICANCE Related to maintenance function of distillery.

ITEM NO.
8-1-15

LOCATION Building #8 Machine Shop **Floor:** 1 **Compass:** E

ITEM NAME • Belt Lace Vice **Quantity:** 1

MARKINGS None Observed

MATERIALS **Primary:** Machine steel
Secondary:

DIMENSIONS **Height:** 6" **Width:** 12" **Depth:** 7"

CONDITION Serviceable

USAGE A. **Distillery:**
B. **General:** Used to install patent belt lace to join ends of belting.

SIGNIFICANCE Related to maintenance operations.



8-1-1611 7
8-1-18/19 Pipe Wrenches



8-1-20 Forming Anvil

ITEM NO.
8-1-16/17
8-1-18/19

LOCATION Building #8 Machine Shop **Floor:** 1 **Compass:** W

ITEM NAME Pipe Wrenches C1896-97 **Quantity:** 4

MARKINGS Var. Cast "THE VULCAN"
"J H WILLIAMS & CO. LTD."
"BUFFALO" "PATENT OCT 96"

MATERIALS **Primary:** Cast and machined steel
Secondary: Formed chain links

DIMENSIONS **Height:** Var. **Width:** **Depth:**

CONDITION Serviceable

USAGE A. **Distillery:**
B. **General:** Pipefitters tools.

SIGNIFICANCE Related to distillery maintenance.

ITEM NO.
8-1-20

LOCATION Building #8 Machine Shop **Floor:** 1 **Compass:** W

ITEM NAME Forming Anvil **Quantity:** 1

MARKINGS None Observed

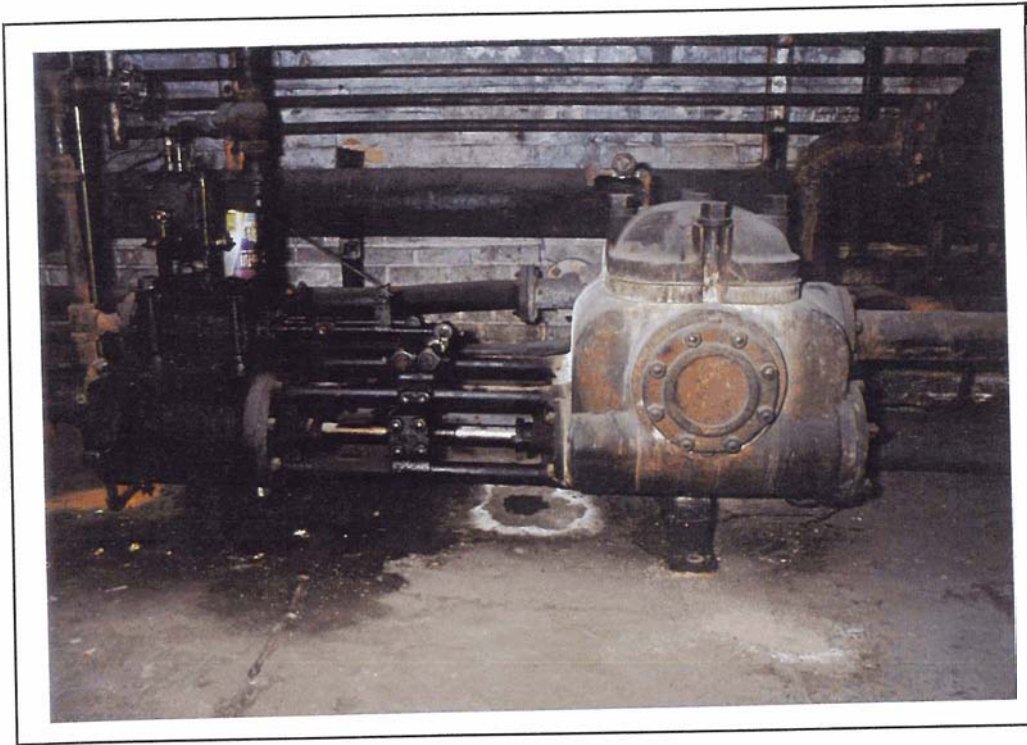
MATERIALS **Primary:** Cast and machined steel
Secondary:

DIMENSIONS **Height:** 34" **Width:** 45"D **Depth:**

CONDITION Serviceable

USAGE A. **Distillery:**
B. **General:** Used to form hollows and tapers in sheet metal.

SIGNIFICANCE Related to distillery maintenance and perhaps coppersmithing.



9-1-1 Duplex Pump

ITEM NO.
9-1-1

LOCATION	Building #9 Tank House	Floor: 1	Compass: SW
ITEM NAME	Duplex Pump C1900-10	Quantity 1	
MARKINGS	(On plate)	"ESTABLISHED 1869" "DEAN BROTHERS COMPANY" "INDIANAPOLIS, IND." "SIZE 8 X 8 X 12"	
MATERIALS	Primary: Cast and machined steel Secondary:		
DIMENSIONS	Height: 32"	Width: 80"	Depth: 20"
CONDITION	Out of service		
USAGE	A. Distillery: Used for molasses transfer. B. General:		
SIGNIFICANCE	Central to distillery operations.		