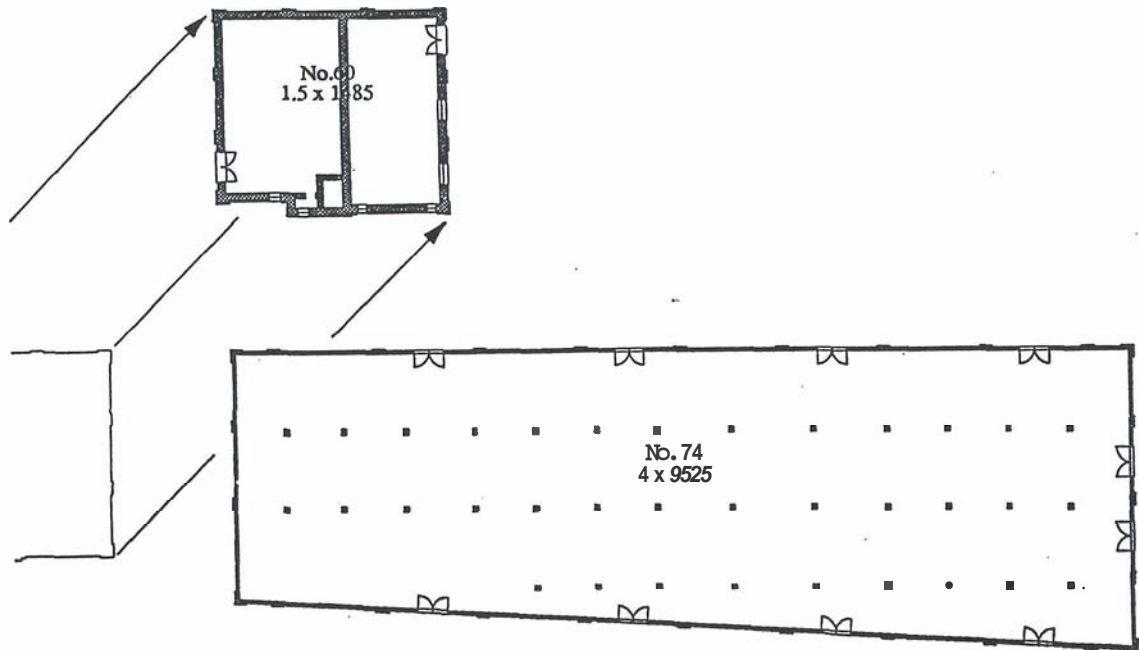


GROUP E: Pump House and Case Goods Warehouse Floor Plan



EQUIPMENT SUMMARY

BUILDING #60

Floor 1
 60-1-1/2 Car Movers
 60-1-3/4 Fire Pumps
 60-1-5 Gauge Panel
 60-1-6 Duplex Pump
 60-1-7 Duplex Pump

BUILDING #74

Floor 1
 74-1-1 Barrel Scale
 74-1-2 Desk
 74-1-3 Hand Barrow
 74-1-4 Hand Cart
 74-1-5 Hand Cart
 74-1-6 Desk
 74-1-718 Scale
 74-1-9 Scale
 74-1-10 Scale
 74-1-11112113 Scale
 74-1-14 Scale
 74-1-15 Stencils
 74-1-16 Crimper
 74-1-17118 Taps
 74-1-19120 Pallet Trucks
 74-1-21/22 Pallet Trucks
 74-1-23 Pallet Truck
 74-1-24125126 Filters
 74-1-27 Wardrobe
 74-1-28 Pails
 74-1-29 Funnels
 74-1-30 Sampler
 74-1-31132 Measures
 74-1-33 Work Tables
 74-1-34 Desk

Floor 2
 No Equipment Observed

Floor 3
 No Equipment Observed

Floor 4
 No Equipment Observed



60-1-1/2 Rail Car Movers



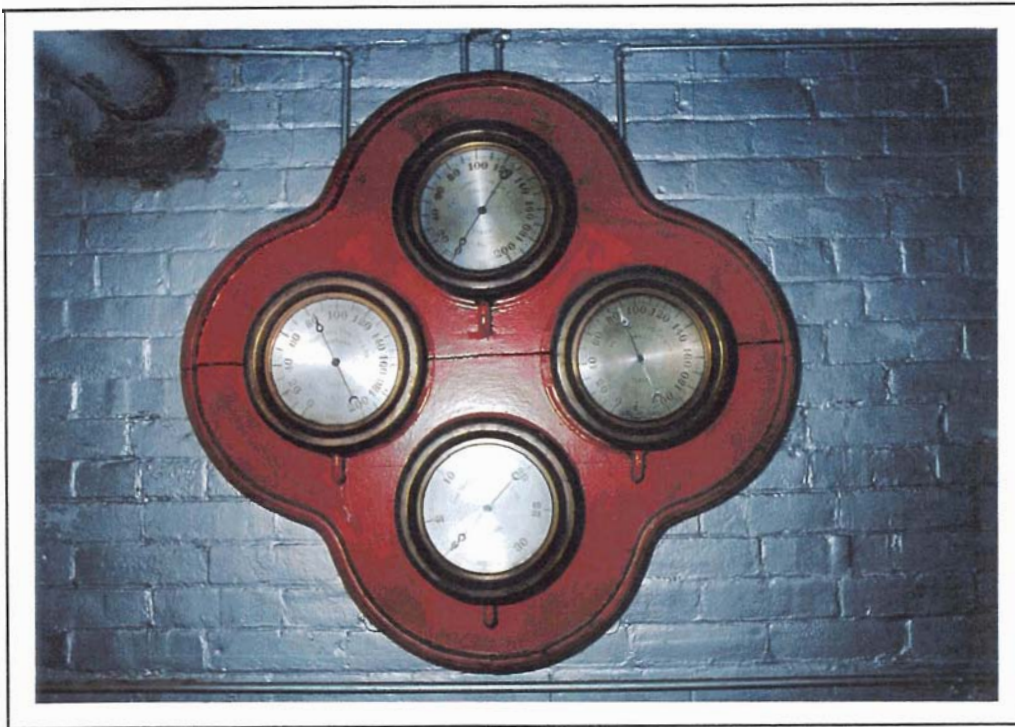
60-1-314 Stationary Engine Pumps

ITEM NO.
60-1-112

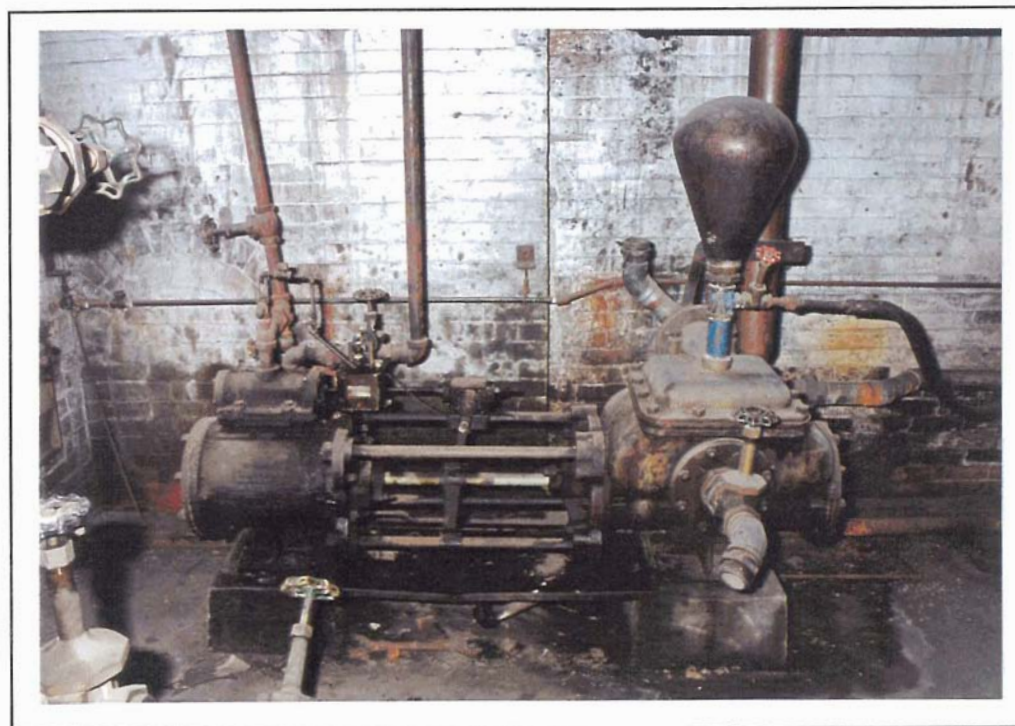
LOCATION	Building #60 Pump House	Floor: 1	Compass SW
ITEM NAME	Rail Car Movers C1910	Quantity: 2	
MARKINGS	Cast "SWACO CAR MOVER" "WORCESTER, MASS" "LOWELL WRENCH CO." "PATENT 1985317"		
MATERIALS	Primary: Cast and machined steel Secondary: Wood handle		
DIMENSIONS	Height: 5'6"	Width: 6"	Depth:
CONDITION	Serviceable		
USAGE	A. Distillery: B. General: To move rail cars by hand.		
SIGNIFICANCE	Related to materials handling.		

ITEM NO.
60-1-314

LOCATION	Building #60 Pump House	Floor: 1	Compass: W
ITEM NAME	Stationary Engine Pumps	Quantity: 2	
MARKINGS	Cast "CONTINENTAL" "WAUKESHA"		
MATERIALS	Primary: Var. Secondary:		
DIMENSIONS	Height: Var.	Width:	Depth:
CONDITION	In service		
USAGE	A. Distillery: B. General: To pump water for fire protection.		
SIGNIFICANCE	Related to fire protection of complex.		



60-1-5 Gauge Panel



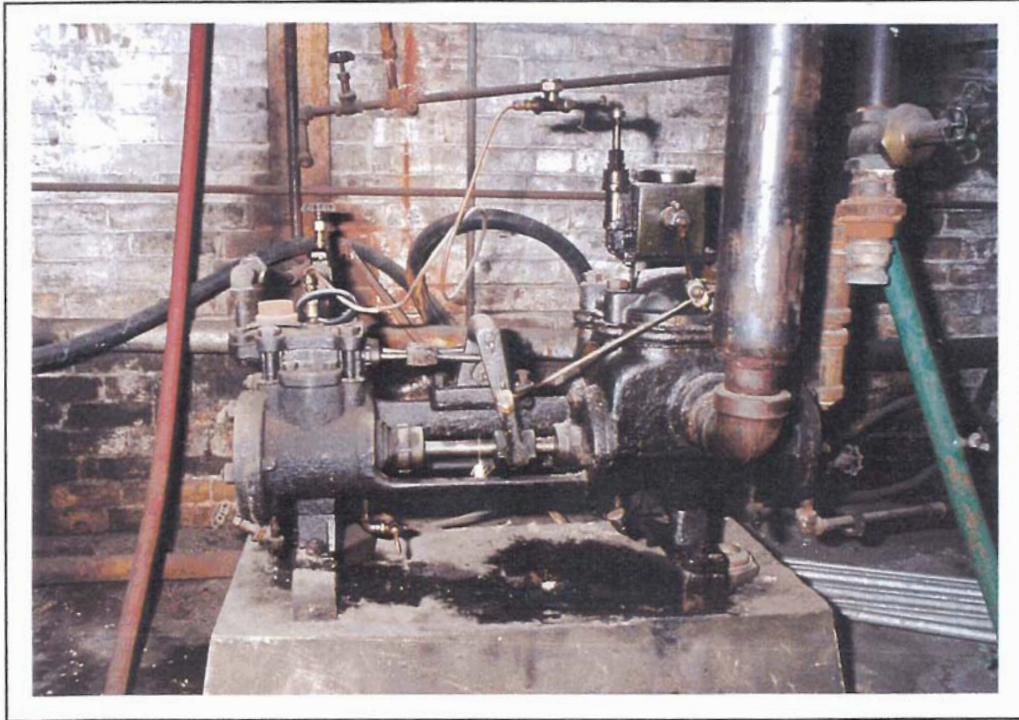
60-1-6 Duplex Pump

ITEM NO.
60-1-5

LOCATION	Building #60 Pump House	Floor: 1	Compass: NW
ITEM NAME	Gauge Panel C1890-1900	Quantity: 1 + 4	
MARKINGS	Engraved	"THE NORTHEY MFG. CO. LTD." "TORONTO" "MORRISON IMPROVED GAUGE" "JAS. MORRISON BRASS MFG. CO. LTD, TORONTO"	
MATERIALS	Primary: Brass and plated metal Secondary:		
DIMENSIONS	Height:	Width: 11"D	Depth:
CONDITION	Serviceable		
USAGE	A. Distillery: B. General: Gauges to monitor pump pressure.		
SIGNIFICANCE	Related to distillery fire protection.		

ITEM NO.
60-1-6

LOCATION	Building #60 Pump House	Floor: 1	Compass: SE
ITEM NAME	Duplex Pump C1893	Quantity: 1	
MARKINGS	Cast (On plate)	"BURNHAM" "UNION STEAM CO. REG. PAT." "BATTLE CREEK, MICH., USA" "PATENTED FEB. 21, 1893"	
MATERIALS	Primary: Cast and machined steel Secondary: Copper		
DIMENSIONS	Height: 64"	Width: 76"	Depth: 18"
CONDITION	Serviceable		
USAGE	A. Distillery: Used to transfer alcohol from/to rail cars. B. General:		
SIGNIFICANCE	Central to distillery operations.		



60-1-7 Duplex Pump

ITEM NO.
60-1-7LOCATION Building #60 Pump House *Floor:* 1 *Compass:* SEITEM NAME Duplex Pump C1900 *Quantity:* 1MARKINGS (On plate) "FAIRBANKS-MORSECO."
"SIZE 4 1/2 X 3 3/4 X 4"
"SER. 41019" "CHICAGO"MATERIALS *Primary:* Cast and machined steel
*Secondary:*DIMENSIONS *Height:* 31" *Width:* 36" *Depth:* 12"

CONDITION Out of service

USAGE A. *Distillery:* Used to transfer alcohol to/from rail cars.
B. *General:*

SIGNIFICANCE Central to distillery operations.



74-1-1 Barrel Scales and Tongs



74-1-2 Stand-Up Desk

ITEM NO.
74-1-1

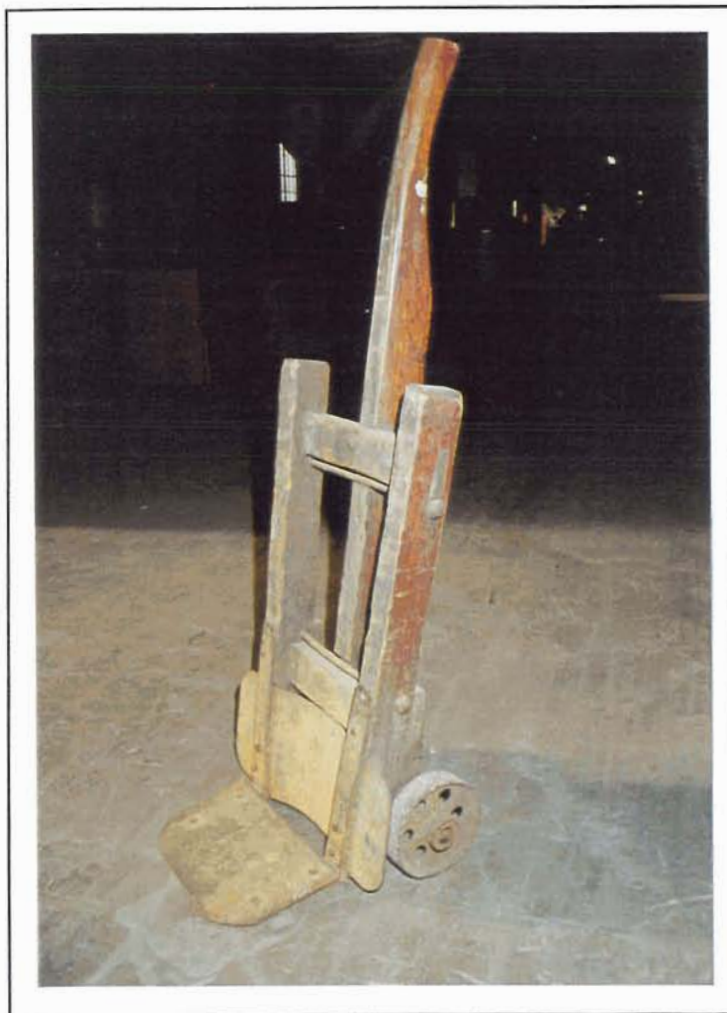
LOCATION	Building #74 Case Goods	floor: 1	Compass: SE
ITEM NAME	Barrel Scales and Tongs C1900	Quantity 1	
MARKINGS	Stencilled Beam	"C. WILSON & SONS, TORONTO" "C. WILSON & SONS, TORONTO"	
MATERIALS	Primary: Wood frame Secondary: Brass beam, steel lifter		
DIMENSIONS	Height: 7'	Width: 8'	Depth: 2'6"
CONDITION	Serviceable		
USAGE	A. Distillery: To weigh barrels B. General:		
SIGNIFICANCE	Central to distillery operations - maturing.		

ITEM NO.
74-1-2

LOCATION	Building #74 Case Goods	Floor: 1	Compass: SE
ITEM NAME	Stand-up Desk C1880	Quantity: 1	
MARKINGS	None Observed		
MATERIALS	Primary: Wood Secondary: Brass drawer pulls		
DIMENSIONS	Height: 47"	Width: 18"	Depth: 30"
CONDITION	Poor		
USAGE	A. Distillery: B. General: Bookkeeping/recording.		
SIGNIFICANCE			



74-1-3 Hand Barrow



74-1-4 Hand Cart

ITEM NO.
74-1-3

LOCATION Building #74 Case Goods *Floor:* 1 *Compass:* S

ITEM NAME Hand Barrow C1880 *Quantity:* 1

MARKINGS None Observed

MATERIALS *Primary:* Woodframe
Secondary: Iron braces and tyres

DIMENSIONS *Height:* 3' *Width:* 6' *Depth:* 4'

CONDITION Poor

USAGE A. *Distillery:*
B. *General:* Materials transport.

SIGNIFICANCE Related to materials transfer.

ITEM NO.
74-1-4

LOCATION Building #74 Case Goods *Floor:* 1 *Compass:* S

ITEM NAME Hand Cart C1900 *Quantity:* 1

MARKINGS None Observed

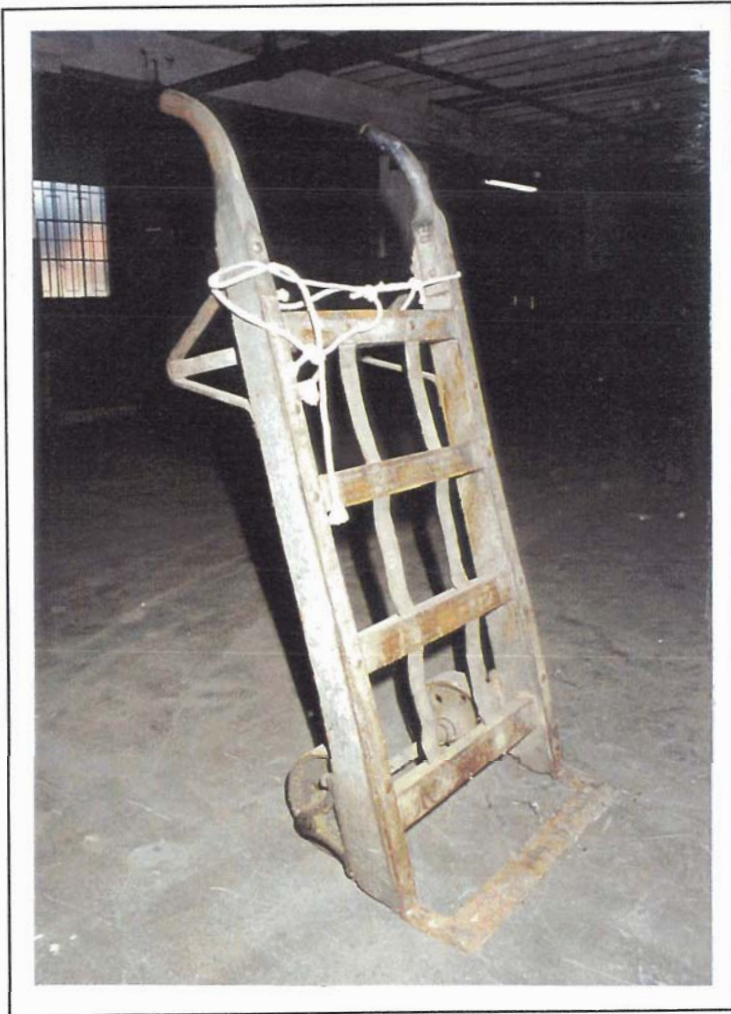
MATERIALS *Primary:* Woodframe
Secondary: Cast iron wheels/platform

DIMENSIONS *Height:* 3'6" *Width:* 16" *Depth:* 12"

CONDITION Serviceable

USAGE A. *Distillery:*
B. *General:* Transport of materials.

SIGNIFICANCE



74-1-5 Hand Cart



74-1-6 Desk

ITEM NO.
74-1-5

LOCATION	Building #74 Case Goods	Floor: 1	Compass: S
ITEM NAME	Hand Cart C1920	Quantity: 1	
MARKINGS	None Observed		
MATERIALS	Primary: Woodframe Secondary: Cast iron wheels and rails		
DIMENSIONS	Height: 4"	Width: 20"	Depth: 12"
CONDITION	Serviceable		
USAGE	A. Distillery: B. General: Transport of materials.		
SIGNIFICANCE			

ITEM NO.
74-1-6

LOCATION	Building #74 Case Goods	Floor: 1	Compass: S
ITEM NAME	Desk C1880	Quantity: 1	
MARKINGS	None Observed		
MATERIALS	Primary: Wood Secondary: Brass pulls		
DIMENSIONS	Height: 3'	Width: 5'6"	Depth: 30"
CONDITION	Poor		
USAGE	A. Distillery: B. General:		
SIGNIFICANCE			



74-1-7/8 Platform Scales



74-1-9 Platform Scale

ITEM NO.
74-1-7/8

LOCATION	Building #74 Case Goods	floor: 1	Compass: S
ITEM NAME	Platform Scales C1930	Quantity: 2	
MARKINGS	(On plate)	"FAIRBANKS-MORSE CANADA"	
MATERIALS	Primary: Cast iron base and columns Secondary.. Plated steel beam		
DIMENSIONS	Height: 4'4"	Width: 3'	Depth: 24"
CONDITION	Serviceable		
USAGE	A. Distillery: B. General: To indicate "over" or "under" weight of filled containers.		
SIGNIFICANCE	Central to cannery operations.		

ITEM NO.
74-1-9

LOCATION	Building #74 Case Goods	Floor: 1	Compass: S
ITEM NAME	Platform Scale	Quantity: 1	
MARKINGS	(On plate)	"FAIRBANKS-MORSE" "CANADA LTD."	
MATERIALS	Primary: Cast iron base and column Secondary: Plated steel beam and indicator		
DIMENSIONS	Height: 5'6"	Width: 30"	Depth: 3'
CONDITION	Serviceable		
USAGE	A. Distillery: B. General: To indicate "over" and "under" weight of filled containers.		
SIGNIFICANCE	Central to cannery operations.		



74-1-10 Platform Scale



74-1-11/12/13 Platform Scales

ITEM NO.
74-1-10

LOCATION	Building #74 Case Goods	Floor: 1	Compass: NW
ITEM NAME	Platform Scale	Quantity: 1	
MARKINGS	Cast	"HOWE"	
MATERIALS	Primary: Cast iron base and wheels Secondary: Wood column and steel beam		
DIMENSIONS	Height: 48"	Width: 40"	Depth: 32"
CONDITION	Serviceable		
USAGE	A. Distillery: B. General: To indicate "over" and "under" weight of filled containers.		
SIGNIFICANCE	Central to cannery operations.		

ITEM NO.
74-1-11/12/13

LOCATION	Building #74 Case Goods	Floor: 1	Compass: NW
ITEM NAME	Platform Scales C1930	Quantity: 3	
MARKINGS	(On plate)	"FAIRBANKS-MORSE (CANADA) LTD." "KINGSTON, ONTARIO"	
MATERIALS	Primary: Cast iron base Secondary: Sheet steel column, steel beam		
DIMENSIONS	Height: 50"	Width: 27"	Depth: 36"
CONDITION	Serviceable		
USAGE	A. Distillery: B. General: To indicate "over and "under" weight of filled containers.		
SIGNIFICANCE	Central to cannery operations.		



74-1-14 Platform Scale



74-1-15 Stencils

ITEM NO.
74-1-14

LOCATION	Building #74 Case Goods	Floor: 1	Compass: NW
ITEM NAME	Platform Scale C1900	Quantity: 1	
MARKINGS	Cast Beam	"FIARBANKS PATENT NO. 8" "FAIRBANKS PATENT"	
MATERIALS	Primary: Cast iron base and wheels Secondary: Wood column, brass beam		
DIMENSIONS	Height: 57"	Width: 50"	Depth: 48"
CONDITION	Serviceable		
USAGE	A. Distillery: B. General: Weigh (barrels) for excise.		
SIGNIFICANCE			

ITEM NO.
74-1-15

LOCATION	Building #74 Case Goods	Floor: 1	Compass: NW
ITEM NAME	Stencils	Quantity 3	
MARKINGS	Cut	"CONSOLIDATED ALCOHOLS LIMITED" "TORONTO"	
MATERIALS	Primary: Brass sheet Secondary:		
DIMENSIONS	Height:	Width: 21"D	Depth:
CONDITION	Serviceable		
USAGE	A. Distillery: To mark barrel heads. B. General:		
SIGNIFICANCE	Related to industrial alcohol production.		



74-1-16 Can Crimper



74-1-17/18 Barrel Taps

ITEM NO.
74-1-16

LOCATION	Building #74 Case Goods	Floor: 1	Compass: NW
ITEM NAME	Can Crimper C1940	Quantity: 1	
MARKINGS	None Observed		
MATERIALS	Primary: Cast and machined steel Secondary:		
DIMENSIONS	Height: 25"	Width: 15"D	Depth:
CONDITION	Serviceable		
USAGE	A. Distillery: B. General: To hand crimp lids on 5 gallon barrels.		
SIGNIFICANCE	Central to cannery operation.		

ITEM NO.
74-1-17/18

LOCATION	Building #74 Case Goods	Floor: 1	Compass: NW
ITEM NAME	Barrel Taps C1940	Quantity: 2	
MARKINGS	None Observed		
MATERIALS	Primary: Plated bronze Secondary:		
DIMENSIONS	Height: 6"	Width: 12" L	Depth: 1 1/2"
CONDITION	Serviceable (hoses missing)		
USAGE	A. Distillery: To fill barrels B. General:		
SIGNIFICANCE	Central to distillery operation - maturing.		



74-1-19/20 Pallet Trucks and Pallets
74-1-21/22

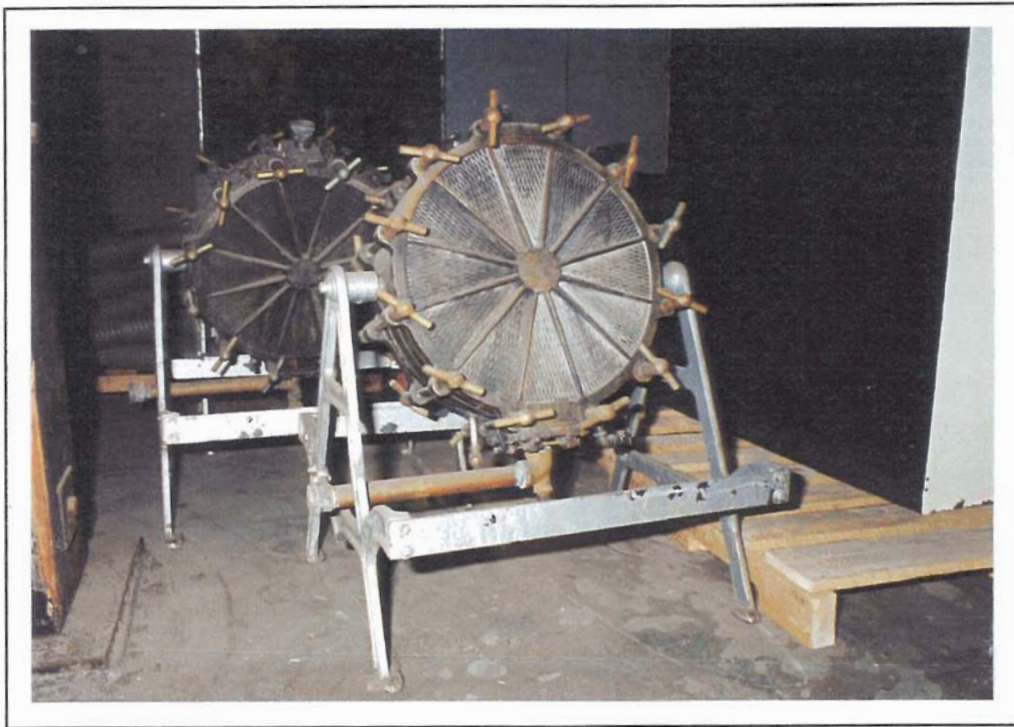


74-1-23 Pallet Truck

DAVID NASBY & ASSOCIATES

				ITEM NO. 74-1-19120 74-1-21/22
LOCATION	Building #74 Case Goods	Floor: 1	Compass:	
ITEM NAME	Pallet Trucks and Pallets C1930	Quantity: 4		
MARKINGS	(On plate)	"THE BARETT LIFT TRUCK" "PATENTED JUNE 2, 1931" "TORONTO" "CAP 2500"		
MATERIALS	Primary: Cast and machined steel frame Secondary:- Hydraulic cylinder Wood pallets			
DIMENSIONS	Height: 58"	Width: 55"	Depth: 18"	
CONDITION	Serviceable			
USAGE	A. Distillery: B. General: To transport palletized materials.			
SIGNIFICANCE				

				ITEM NO. 74-1-23
LOCATION	Building #74 Case Goods	Floor: 1	Compass: SE	
ITEM NAME	Pallet Truck C1910	Quantity: 1		
MARKINGS	(On plate)	"THE HERBERT MORRIS CRANE HOIST LIMITED" "NIAGARA FALLS"		
MATERIALS	Primary: Cast and machined steel Secondary:			
DIMENSIONS	Height: 48"	Width: 64"	Depth: 18"	
CONDITION	Out of service			
USAGE	A. Distillery: B. General: Transport palletized materials.			
SIGNIFICANCE	Early design.			



74-1-24125126 Plate Filters



74-1-27 Wardrobe

ITEM NO.
74-1-24125126

LOCATION	Building #74 Case Goods	Roor: 1	Compass: W
ITEM NAME	Plate Filters	C1910	Quantity: 3
MARKINGS	(On plate)	"US DRUM MULTIPLE DISC FILTER" "PAT. NO. P884253 APRIL 7, 1908" "US BOTTLERS MACHY, ENGINEERING DEPT." "CHICAGO, USA"	
MATERIALS	Primary: Plated bronze Secondary: Bronze T handles Steel frame		
DIMENSIONS	Hwght: 34"	Width: 28"	Depth: 26"
CONDITION	Out of service		
USAGE	A. Distillery: To filter spirits on a portable basis. B. General:		
SIGNIFICANCE	Central to distillery operation - mixing.		

ITEM NO.
74-1-27

LOCATION	Building #74 Case Goods	Floor: 1	Compass: W
ITEM NAME	Wardrobe	C1885	Quantity: 1
MARKINGS	None Observed		
MATERIALS	Primary: Wood Secondary:		
DIMENSIONS	Height: 7'6"	Width: 6'10"	Depth: 24"
CONDITION	Poor		
USAGE	A. Distillery.. B. General:		
SIGNIFICANCE			



74-1-28 Sampling Pails



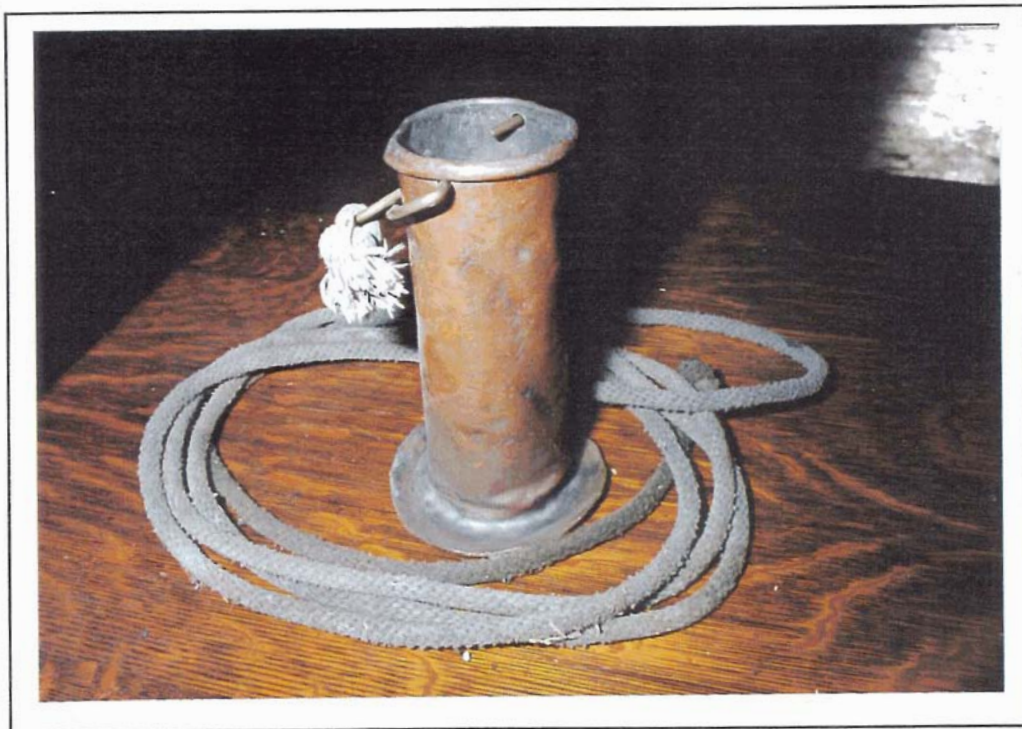
74-1-29 Funnels

ITEM NO.
74-1-28

LOCATION	Building #74 Case Goods	Floor: 1	Compass: NW
ITEM NAME	Sampling Pails	Quantity: 9	
MARKINGS	Var.	"ETHYLENE ACETATE" "DENATURING ROOM"	"SOL. NAPTHA" "CAMPHOR"
MATERIALS	Primary: Brass and copper Secondary: Steel handles		
DIMENSIONS	Height: Var.	Width:	Depth:
CONDITION	Poor to good		
USAGE	A. Distillery: B. General: To transport various chemical samples for testing.		
SIGNIFICANCE			

ITEM NO.
74-1-29

LOCATION	Building #74 Case Goods	Floor: 1	Compass: NW
ITEM NAME	Funnels	Quantity: 6	
MARKINGS	None Observed		
MATERIALS	Primary: Formed and brazed copper Secondary:		
DIMENSIONS	Height: Var.	Width:	Depth:
CONDITION	Poor		
USAGE	A. Distillery: B. General: To permit transfer of liquids.		
SIGNIFICANCE			



74-1-30 Sampler



74-1-31/32 Measures

ITEM NO.
74-1-30

LOCATION	Building #74 Case Goods	Floor: 1	Compass: NW
ITEM NAME	Sampler	Quantity: 1	
MARKINGS	None Observed		
MATERIALS	Primary: Copper body Secondary: Brass handle		
DIMENSIONS	Height: 9"	Width: 2 1/2"D	Depth:
CONDITION	Useable		
USAGE	A. Distillery.' Likely to take tank samples, either mash or spirit. B. General:		
SIGNIFICANCE	Central to distillery operations - quality control.		

ITEM NO.
74-1-31/32

LOCATION	Building #74 Case Goods	Floor: 1	Compass: NW
ITEM NAME	Measures	Quantity: 2	
MARKINGS	None Observed		
MATERIALS	Primary: Copper and plated tin Secondary..		
DIMENSIONS	Height: 9"	Width: 6"D	Depth:
CONDITION	Poor		
USAGE	A. Distillery.. B. General: To transport or measure process liquids.		
SIGNIFICANCE			



74-1-33 Work Tables



74-1-34 Office Desk

ITEM NO.
74-1-33

LOCATION Building #74 Case Goods **Floor: 1** **Compass: W**

ITEM NAME Work Tables C1870-80 **Quantity: 2**

MARKINGS None Observed

MATERIALS **Primary:** Wood
Secondary:

DIMENSIONS **Height: 31"** **Width: 48"** **Depth: 30"**

CONDITION Poor, stretcher missing from one.

USAGE A. **Distillery:**
B. **General:**

SIGNIFICANCE

ITEM NO.
74-1-34

LOCATION Building #74 Case Goods **Floor: 1** **Compass: C**

ITEM NAME Office Desk **Quantity: 1**

MARKINGS None Observed

MATERIALS **Primary:-** Solid wood and veneer
Secondary: Brass pulls

DIMENSIONS **Height: 32"** **Width: 66"** **Depth: 39"**

CONDITION Fair

USAGE A. **Distillery**
B. **General:**

SIGNIFICANCE